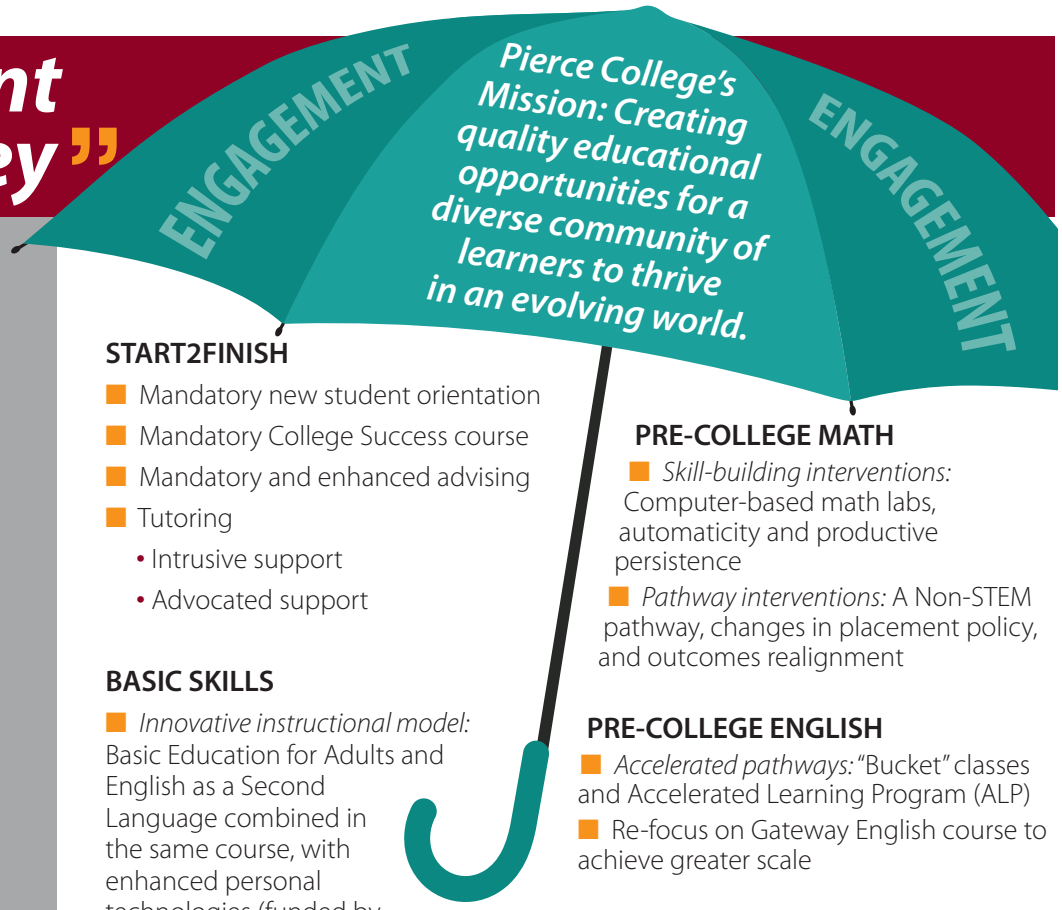


ACHIEVING THE DREAM: PIERCE'S FIRST FOUR YEARS



“Engagement is the key”



200+ employees participate on ATD Priority Teams.



The College Budget Team annually shifts resources to support Priority Team interventions (\$4 million over 4 years).



The Center for Engagement and Learning (funded by Title III) provides intensive professional development, primarily for full and part-time faculty.



Faculty members now have the ability to use data to evaluate their own courses, and to compare across their departments and with peers. The Institutional Research staff uses Tableau to provide decentralized, disaggregated data in an accessible format.

START2FINISH

- Mandatory new student orientation
- Mandatory College Success course
- Mandatory and enhanced advising
- Tutoring
 - Intrusive support
 - Advocated support

BASIC SKILLS

■ *Innovative instructional model:* Basic Education for Adults and English as a Second Language combined in the same course, with enhanced personal technologies (funded by an IDEA Grant)

■ *Adult diploma program:* Last quarter of high school doubles as first quarter in college, and college tuition is waived

PRE-COLLEGE MATH

- *Skill-building interventions:* Computer-based math labs, automaticity and productive persistence
- *Pathway interventions:* A Non-STEM pathway, changes in placement policy, and outcomes realignment

PRE-COLLEGE ENGLISH

- *Accelerated pathways:* “Bucket” classes and Accelerated Learning Program (ALP)
- Re-focus on Gateway English course to achieve greater scale

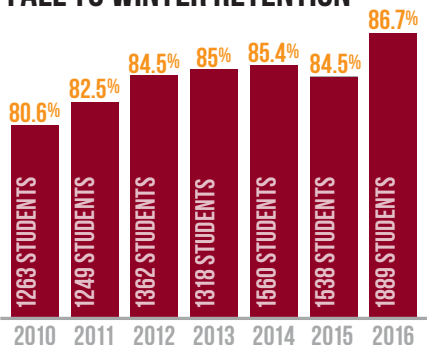
EQUITY

- Systemic professional development to increase cultural competency
- Hired Executive Officer of Equity Diversity and Inclusion

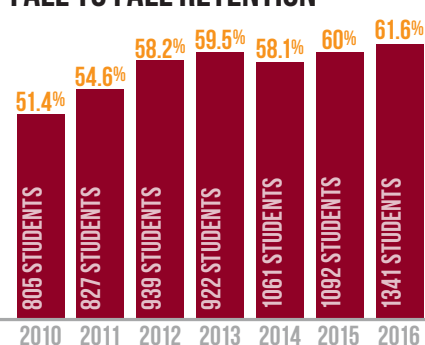
CLOSE THE GAP 2020

Our goal is to close achievement gaps by 2020, while raising overall student success rates.

FALL TO WINTER RETENTION



FALL TO FALL RETENTION



DEGREE AND CERTIFICATE COMPLETIONS (3-YEAR RATE)

