


Fort Steilacoom Campus Map

9401 Farwest Drive SW, Lakewood, WA 98498

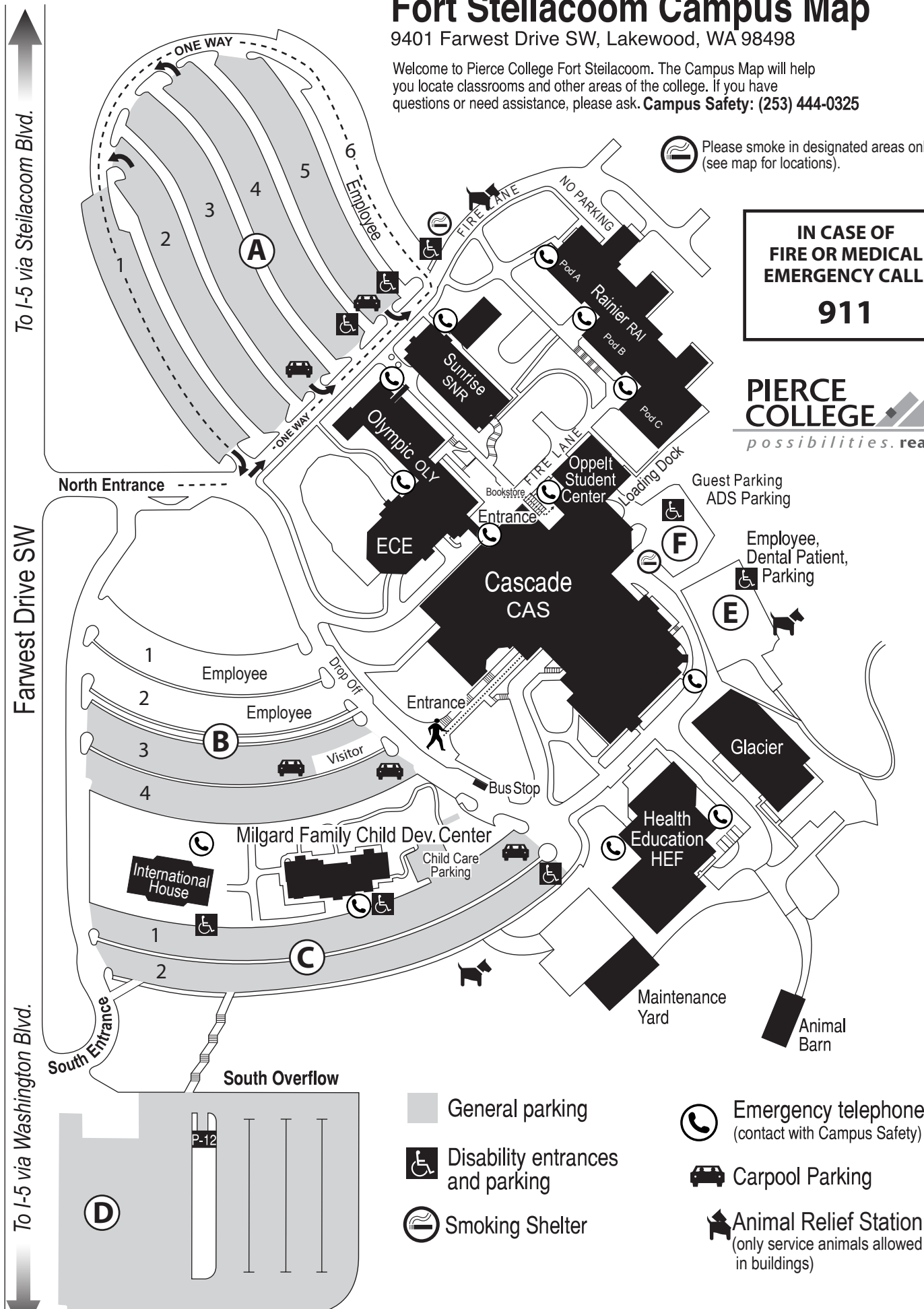
Welcome to Pierce College Fort Steilacoom. The Campus Map will help you locate classrooms and other areas of the college. If you have questions or need assistance, please ask. **Campus Safety: (253) 444-0325**

 Please smoke in designated areas only (see map for locations).

**IN CASE OF
FIRE OR MEDICAL
EMERGENCY CALL:

911**

**PIERCE
COLLEGE** 
possibilities. realized.



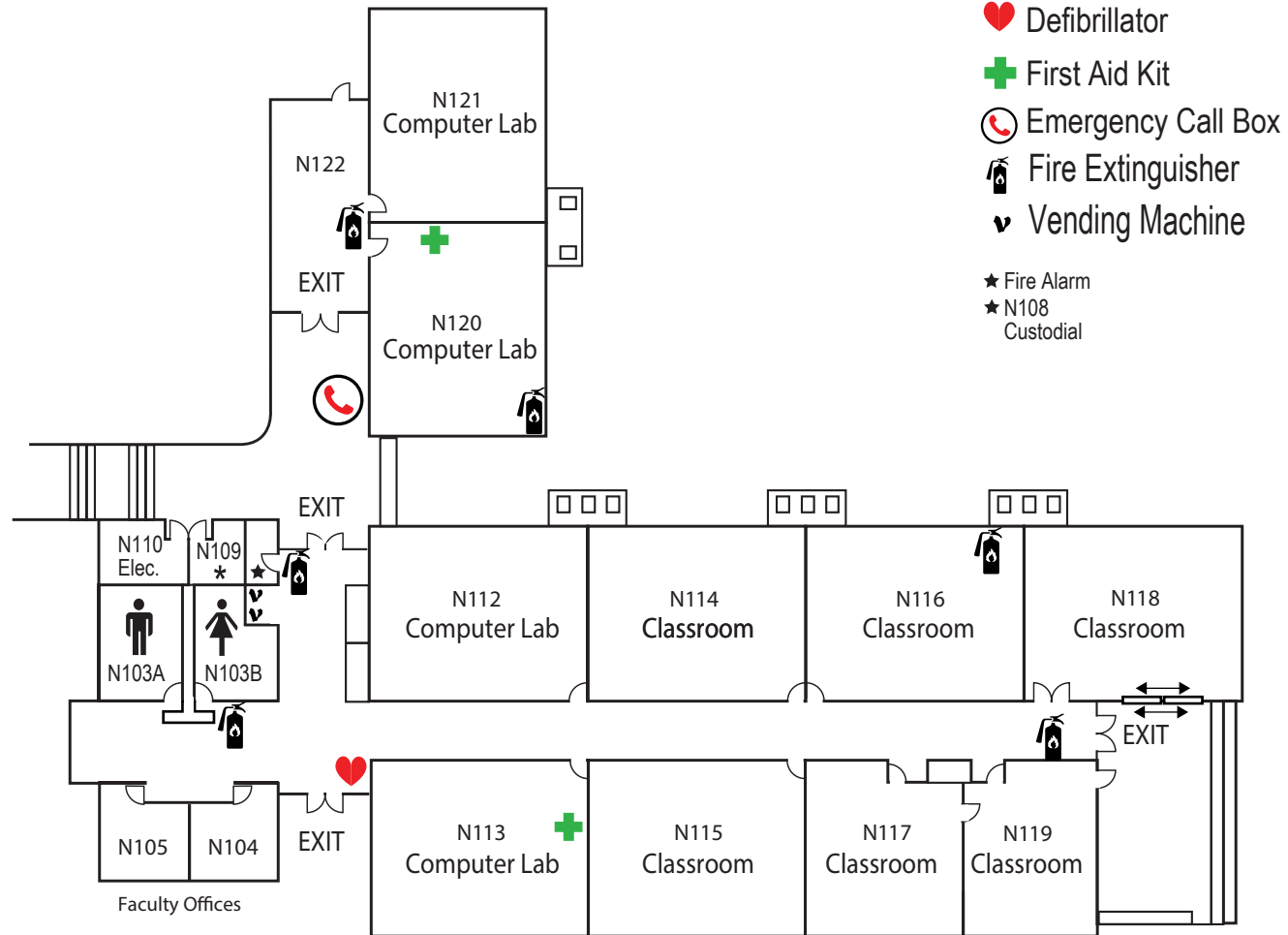
To I-5 via Steilacoom Blvd.

Farwest Drive SW

To I-5 via Washington Blvd.

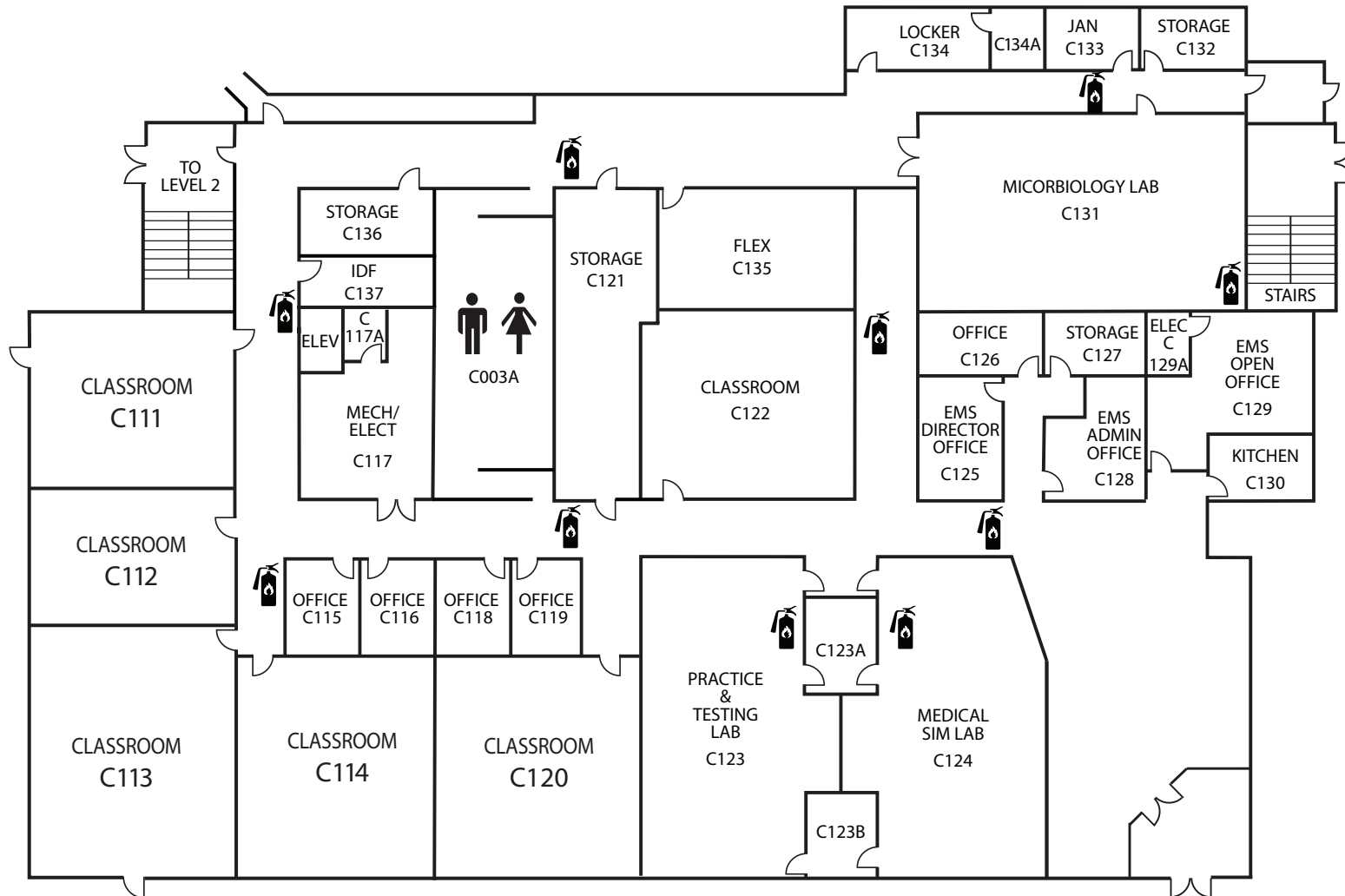
Sunrise Building (SNR)

Updated 12-12-18



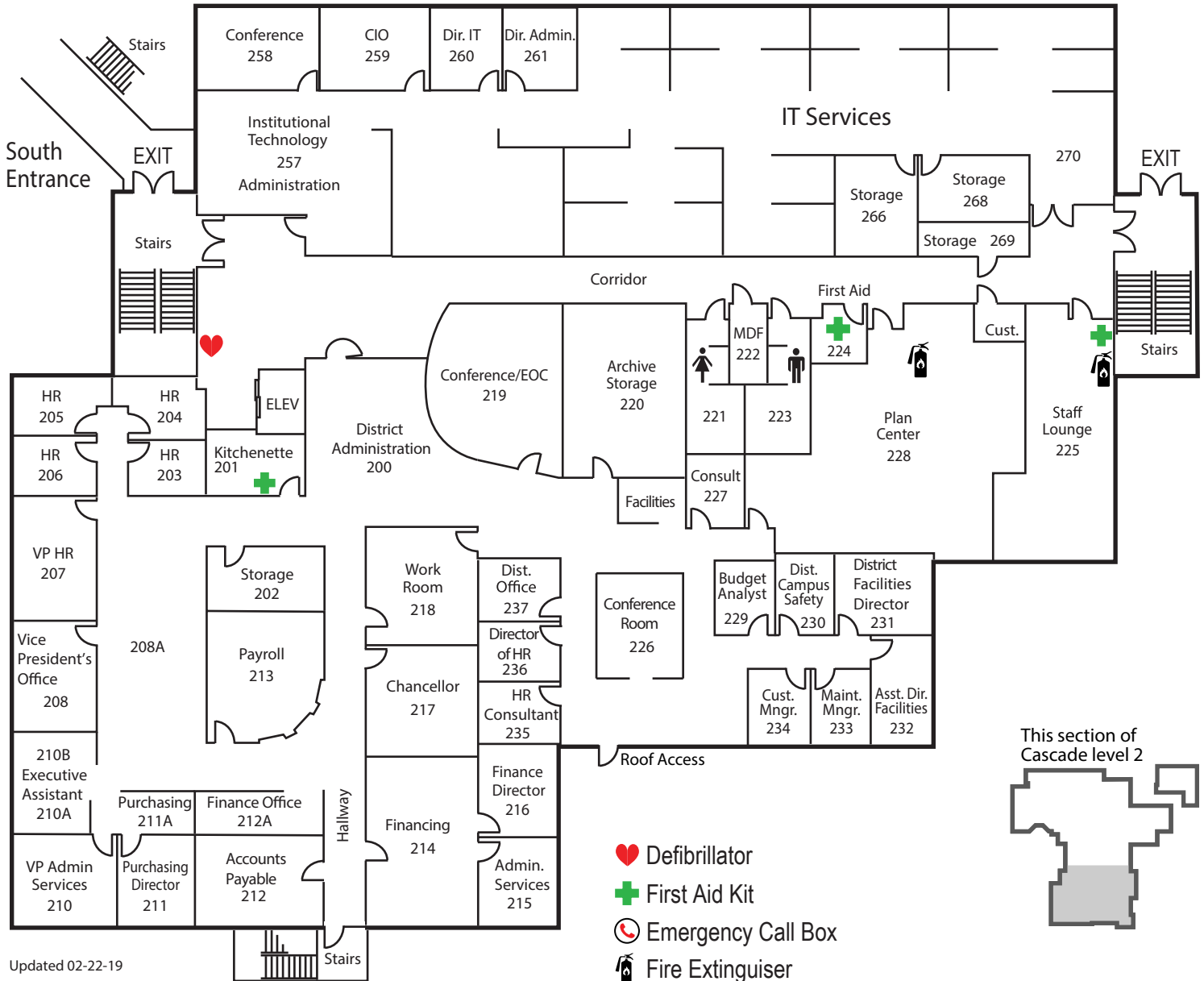
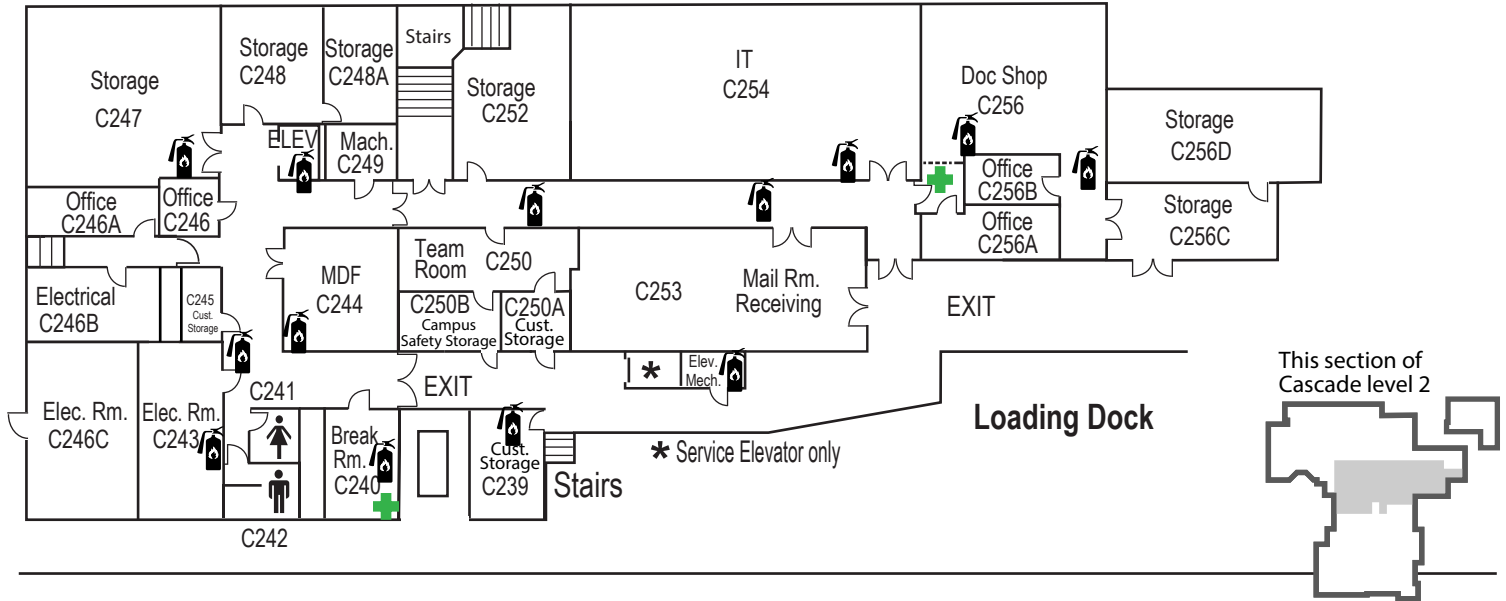
Cascade Building (CAS)

Level 1



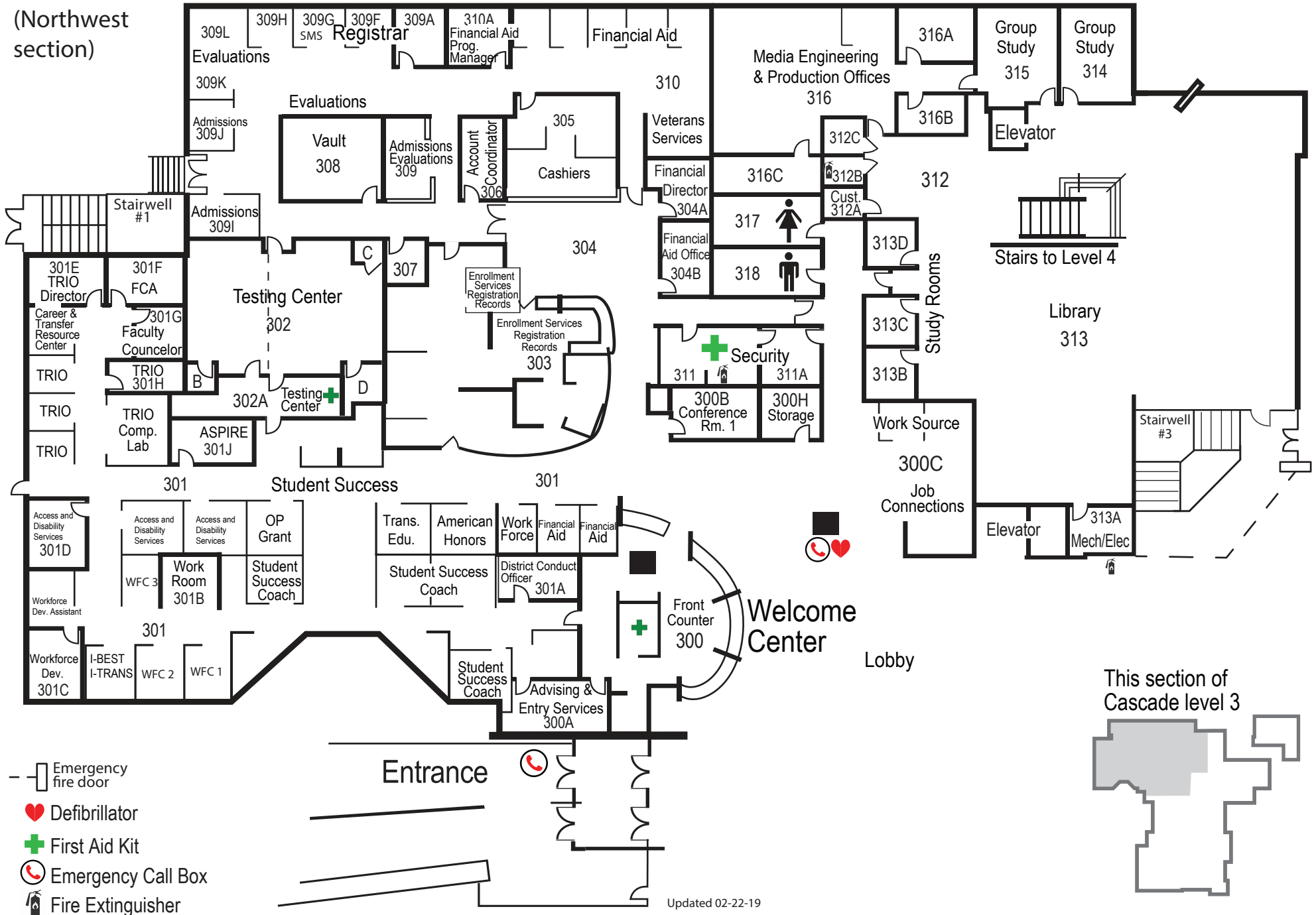
Cascade Building (CAS)

Level 2



Cascade Building (CAS)

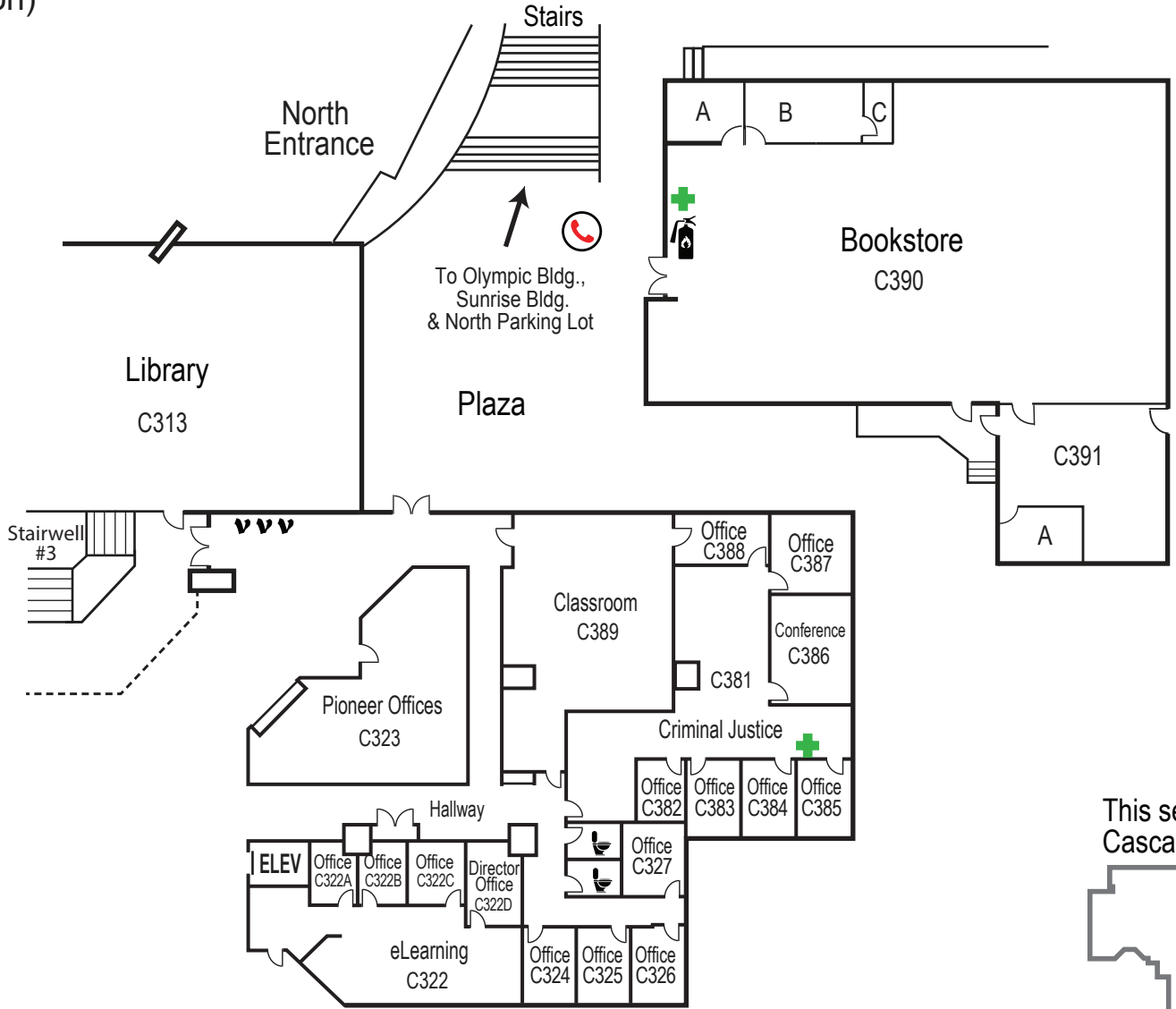
Level 3
(Northwest section)



Cascade Building (CAS)

Level 3

(Northeast section)



Construction Zones

Defibrillator

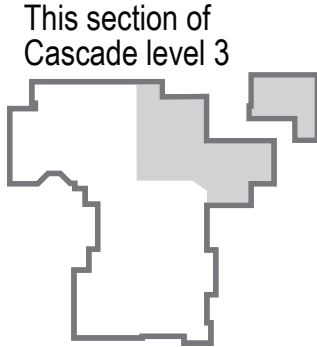
First Aid Kit

Emergency Call Box

Fire Extinguisher

All Gender Restroom

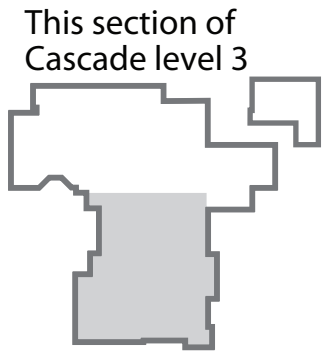
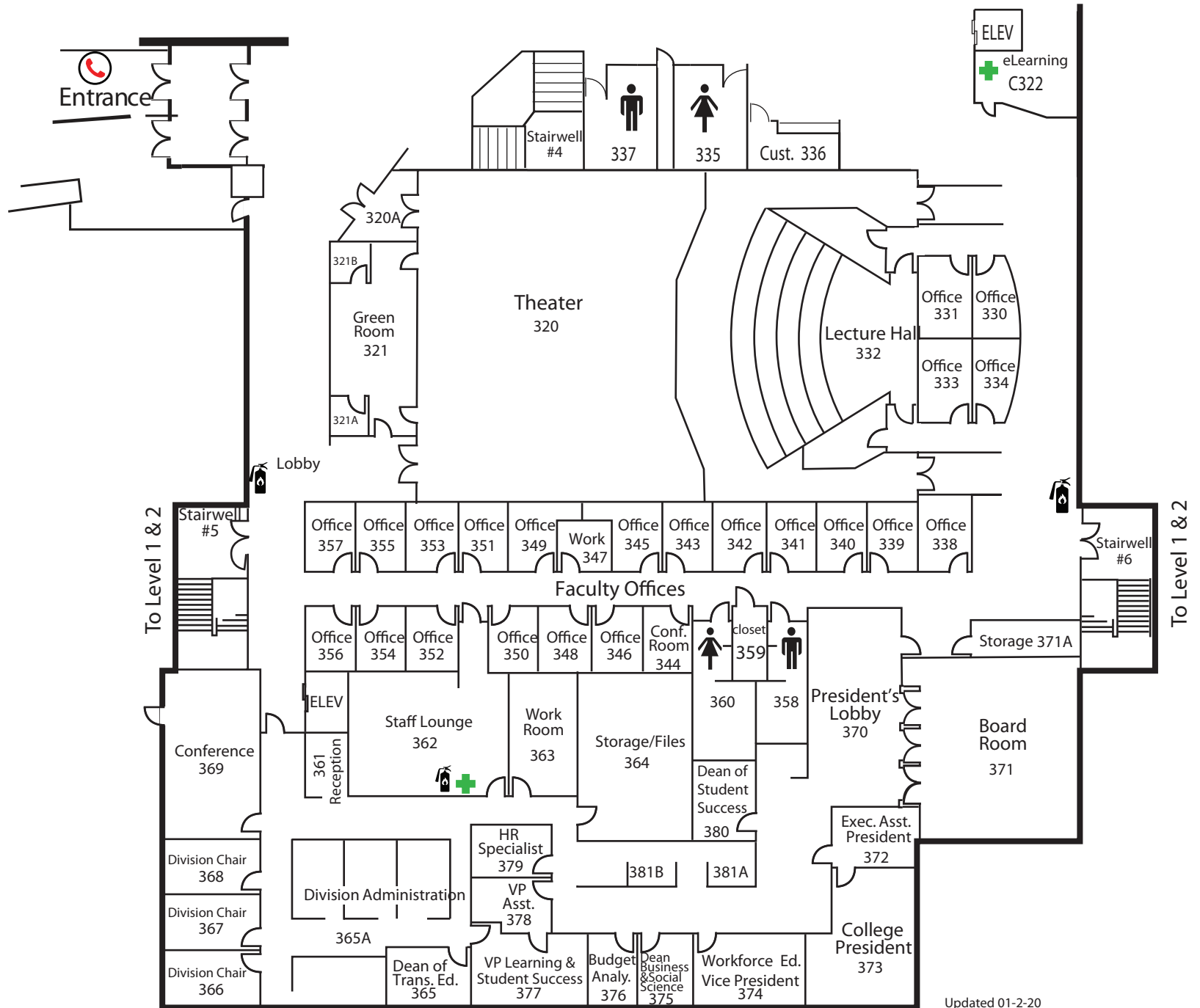
Vending Machine



Cascade Building (CAS)

Level 3

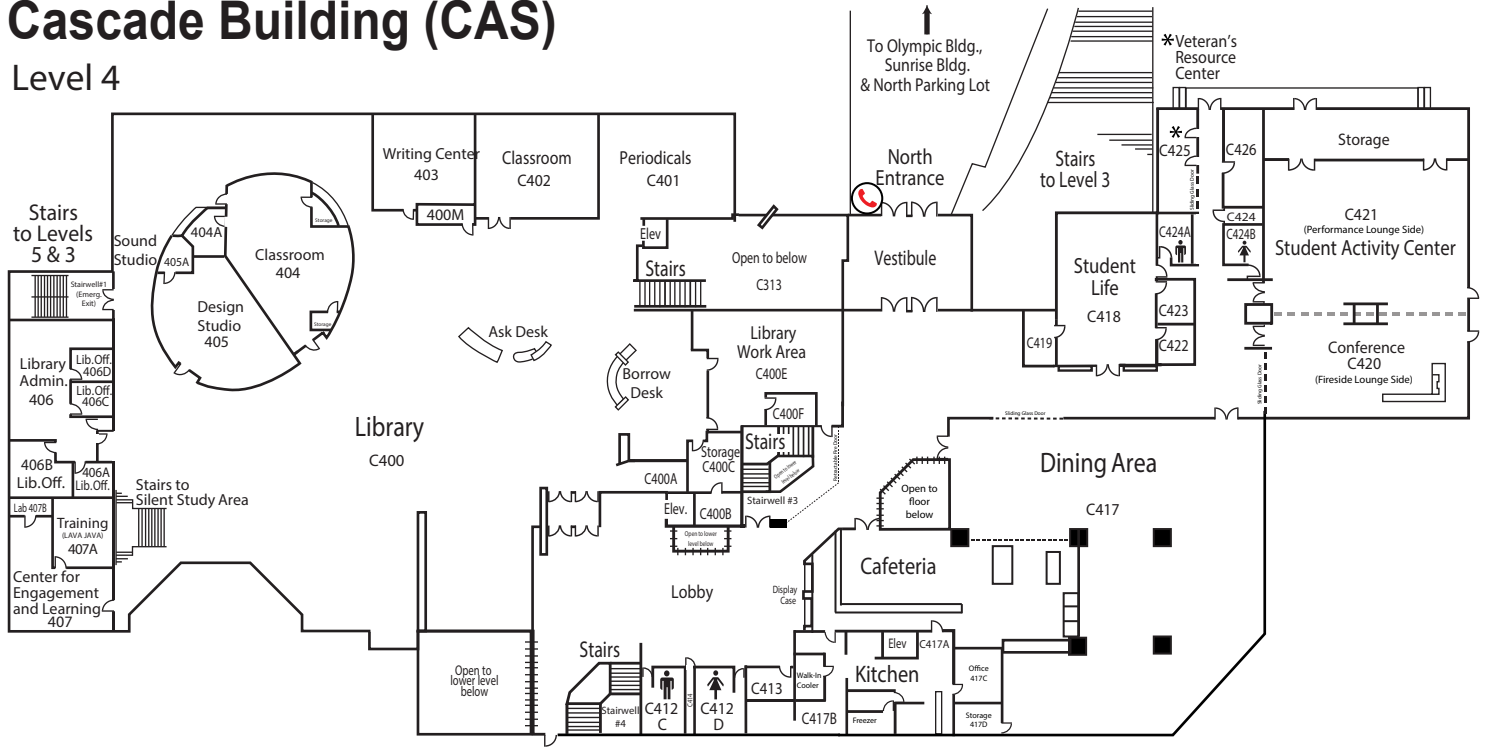
(South section)



- ♥ Defibrillator
- ✚ First Aid Kit
- ☎ Emergency Call Box
- 🧯 Fire Extinguisher
- 🚻 All Gender Restroom

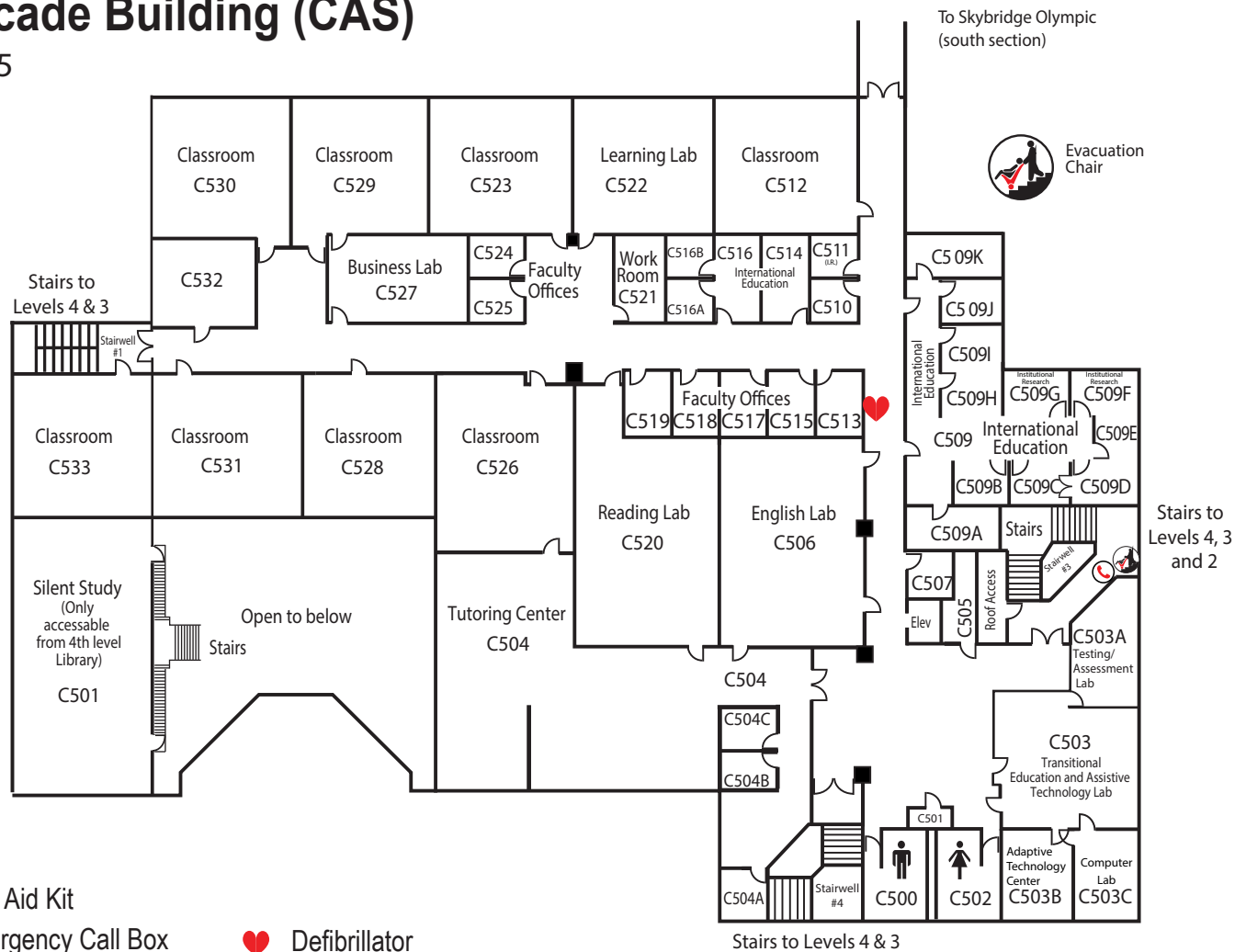
Cascade Building (CAS)

Level 4



Cascade Building (CAS)

Level 5



First Aid Kit

Emergency Call Box

Defibrillator

Sliding Door/Wall

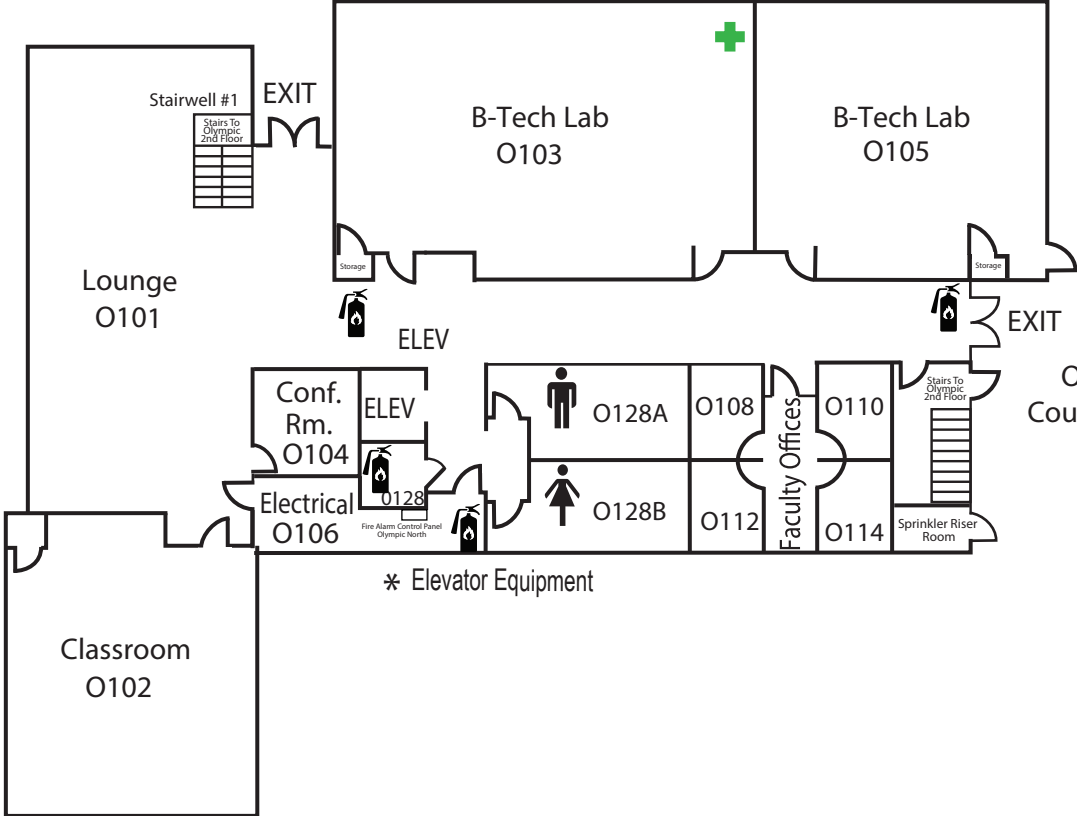
Railings

Updated 02-22-19

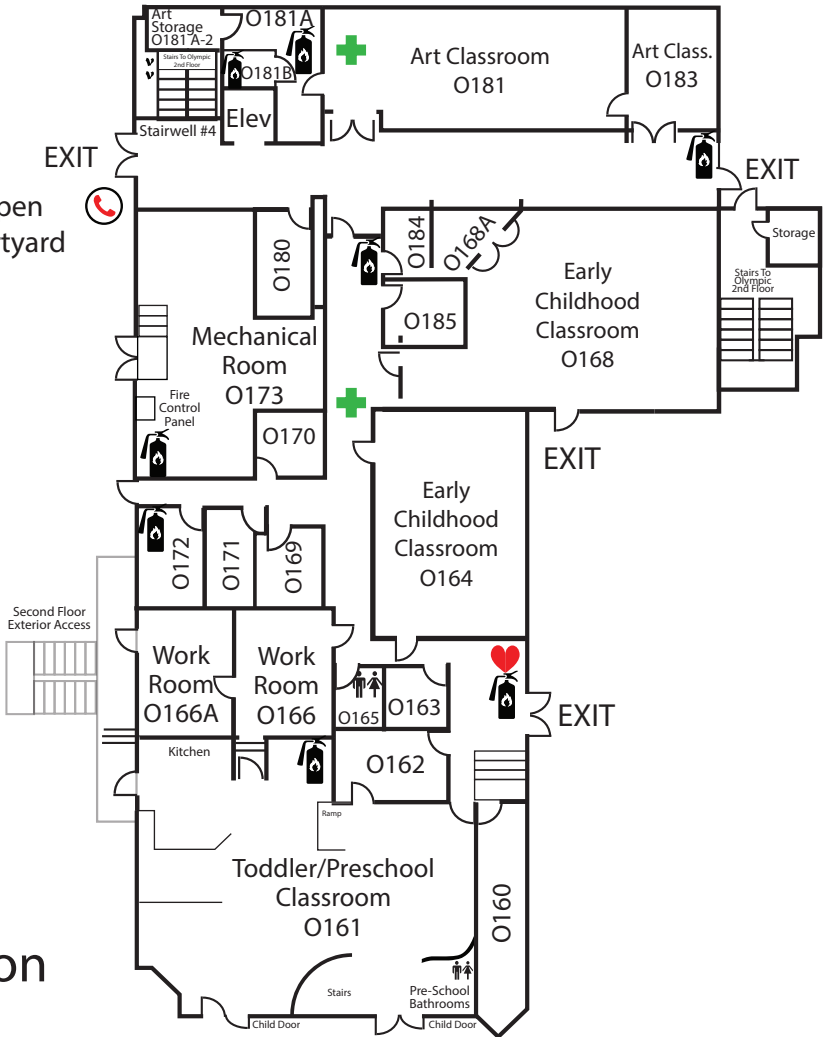
Olympic Building (OLY)

Level 1






North section



Early Childhood Education/Art

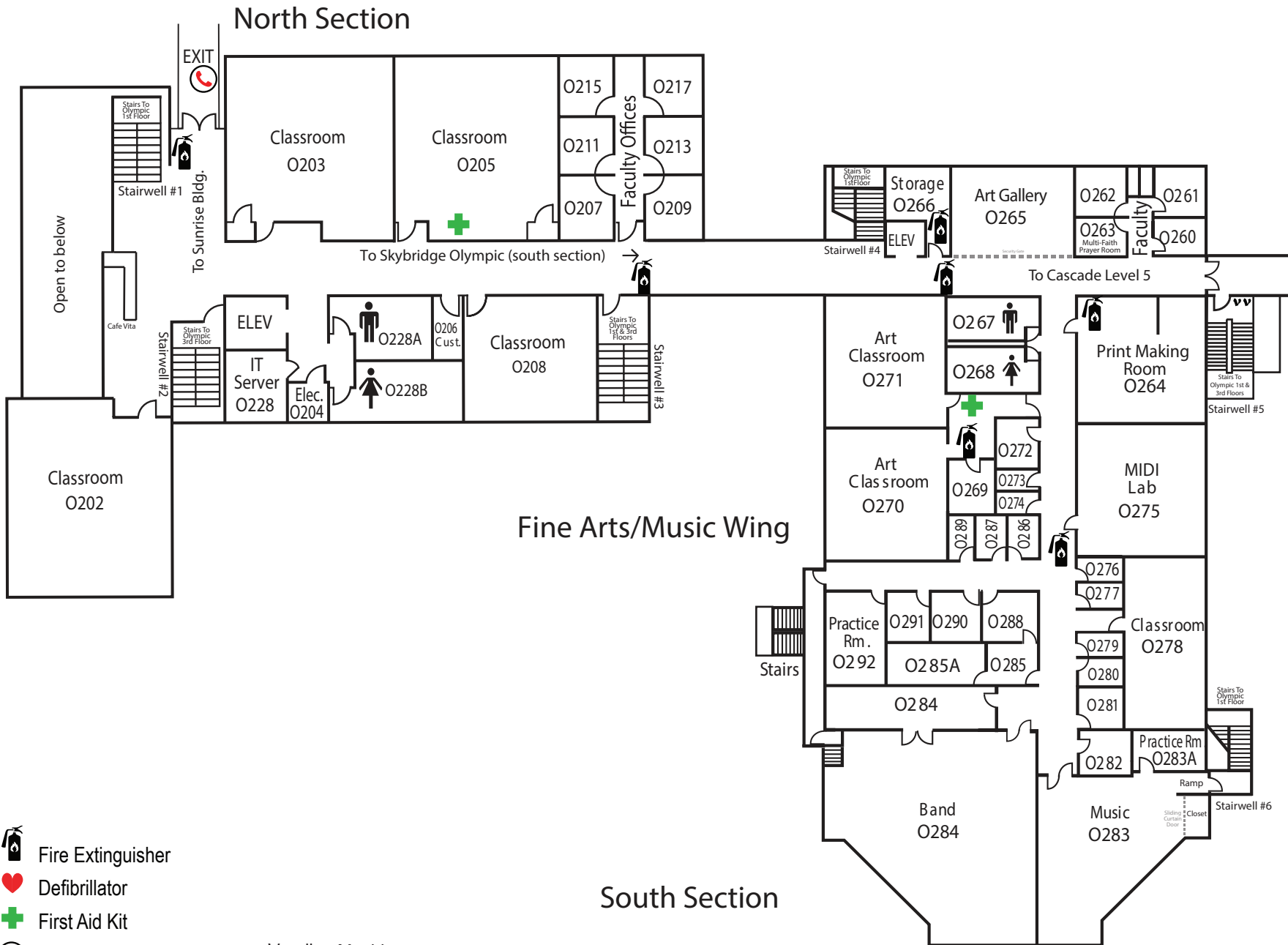






South section

-  Fire Extinguisher
-  Defibrillator
-  First Aid Kit
-  Emergency Call Box
-  Vending Machine

Olympic Building (OLY)

Level 2



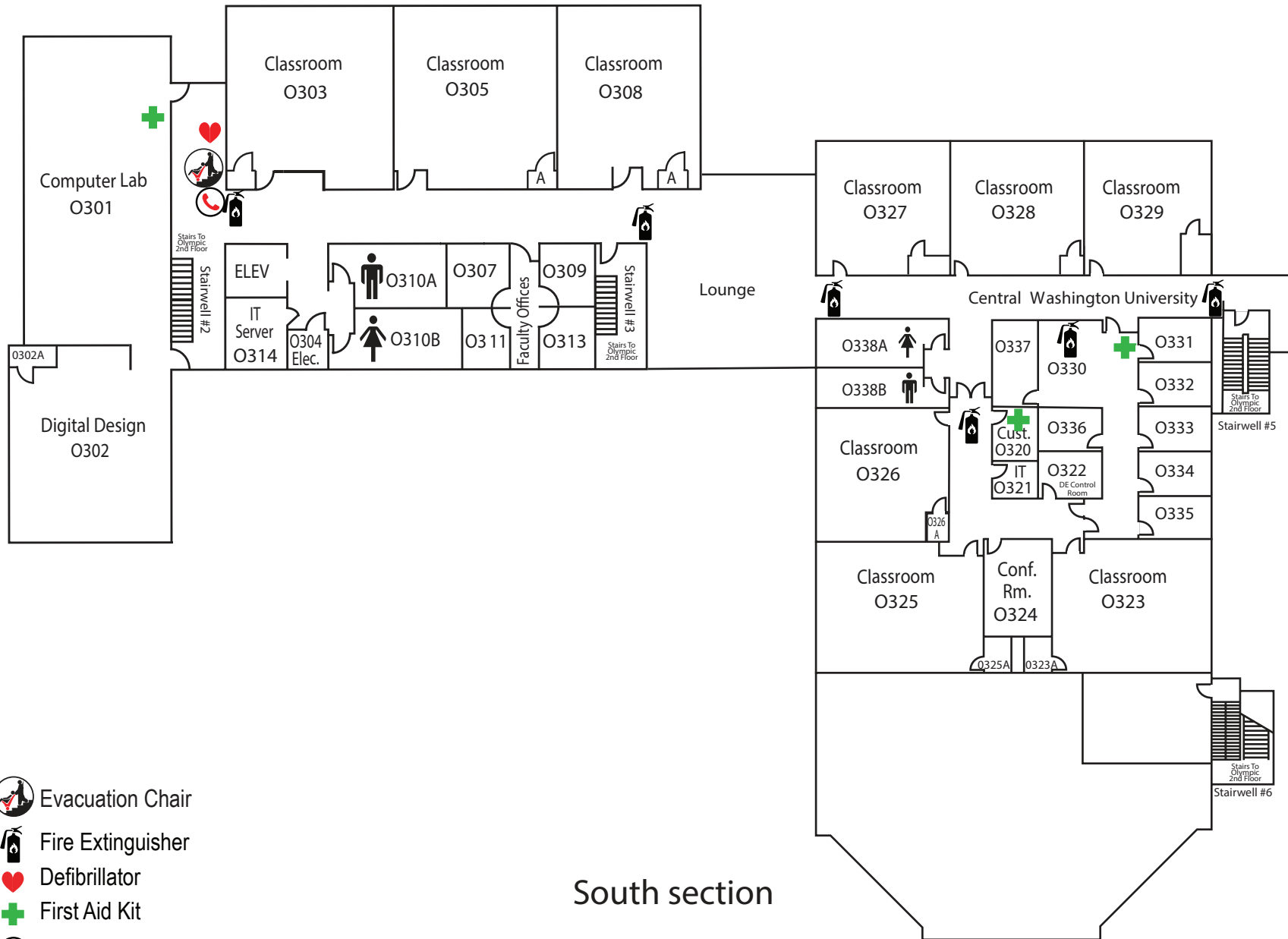
-  Fire Extinguisher
-  Defibrillator
-  First Aid Kit
-  Emergency Call Box

 Vending Machine

Olympic Building (OLY)

Level 3

North section

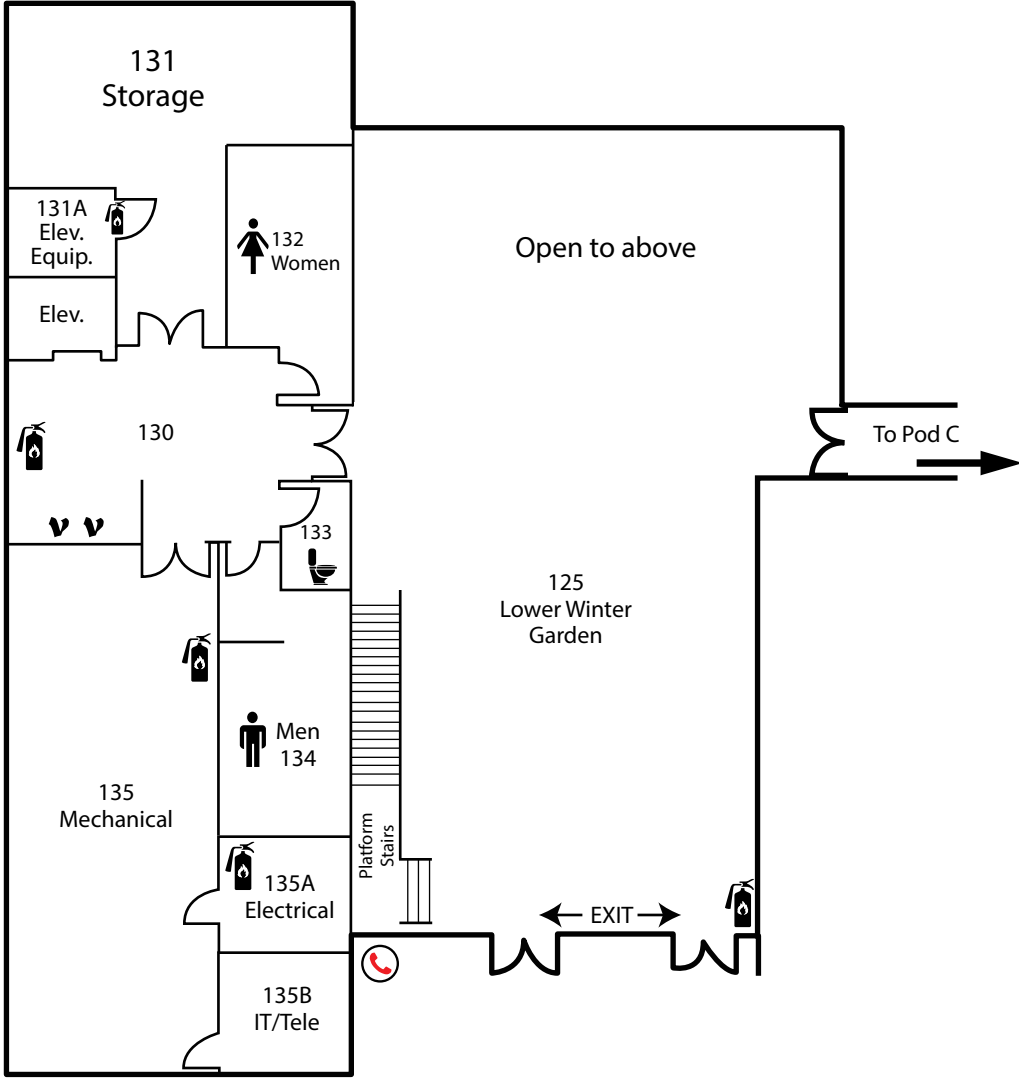






South section

-  Evacuation Chair
-  Fire Extinguisher
-  Defibrillator
-  First Aid Kit
-  Emergency Call Box

Rainier Building (RAI)

First/Orange Level - Pod B

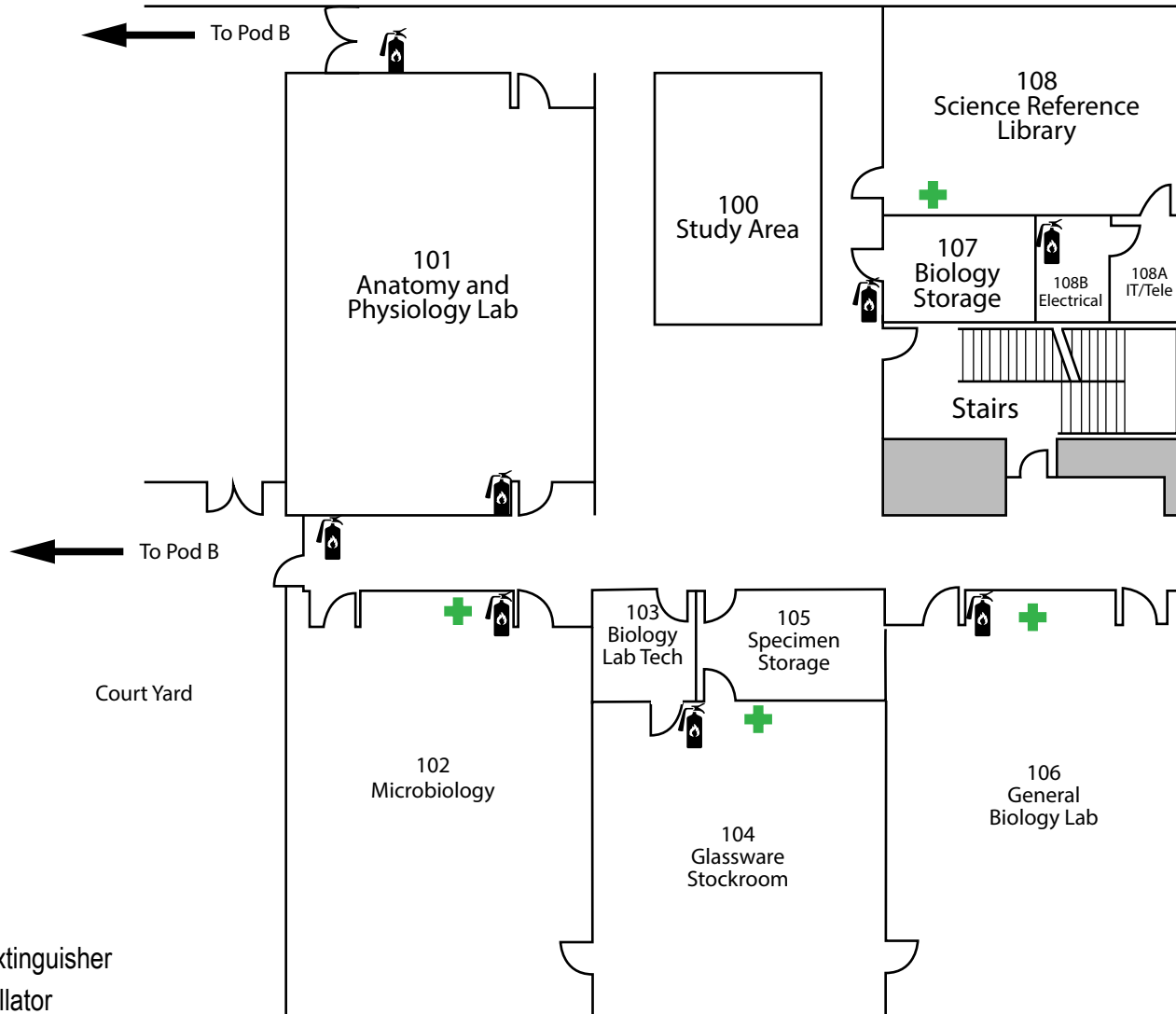






-  Fire Extinguisher
-  Defibrillator
-  First Aid Kit
-  Emergency Call Box

-  All Gender Restroom
-  Vending Machine

Rainier Building (RAI)

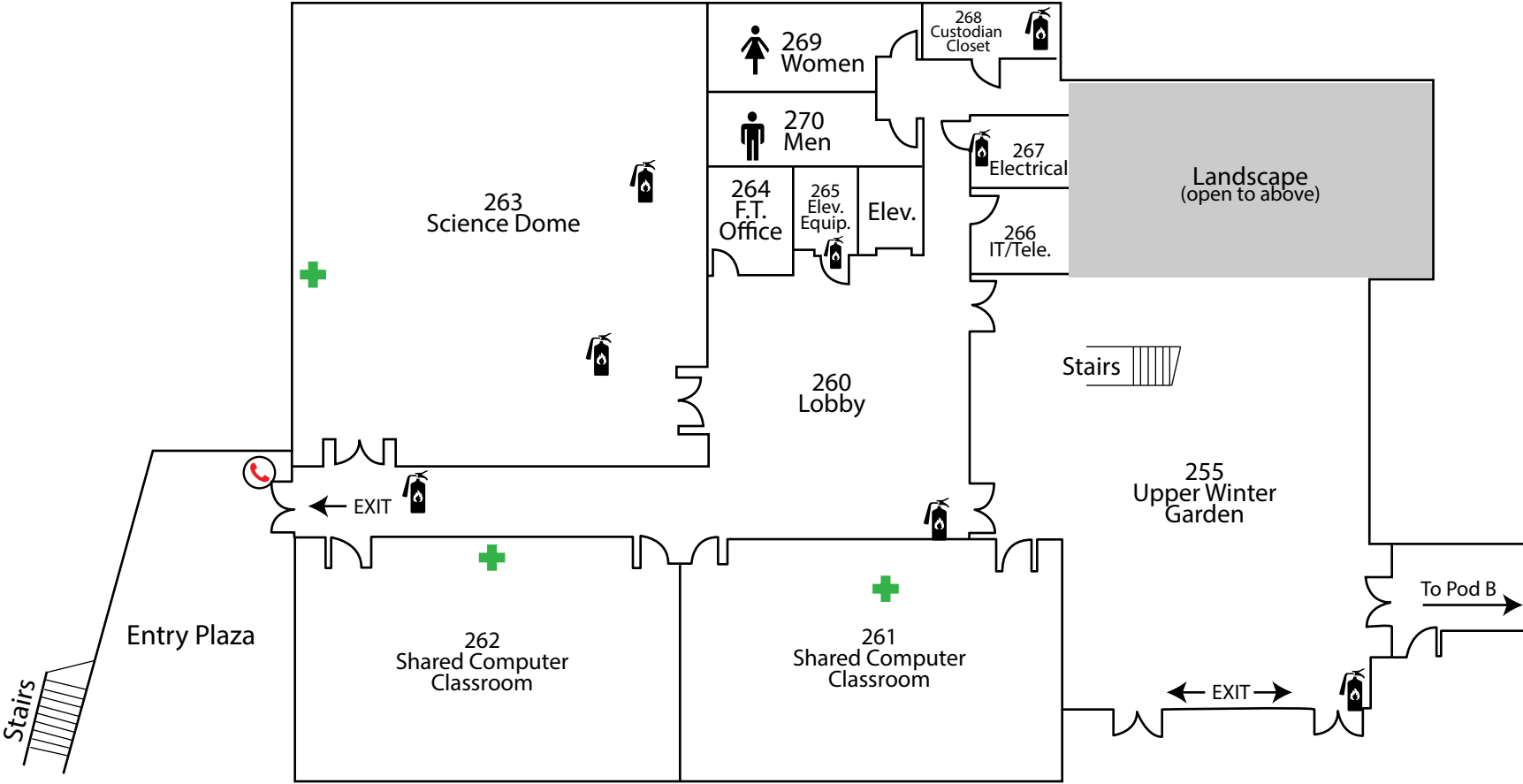
First/Orange Level - Pod C







-  Fire Extinguisher
-  Defibrillator
-  First Aid Kit
-  Emergency Call Box





Rainier Building (RAI)

Second/Blue Level - Pod A

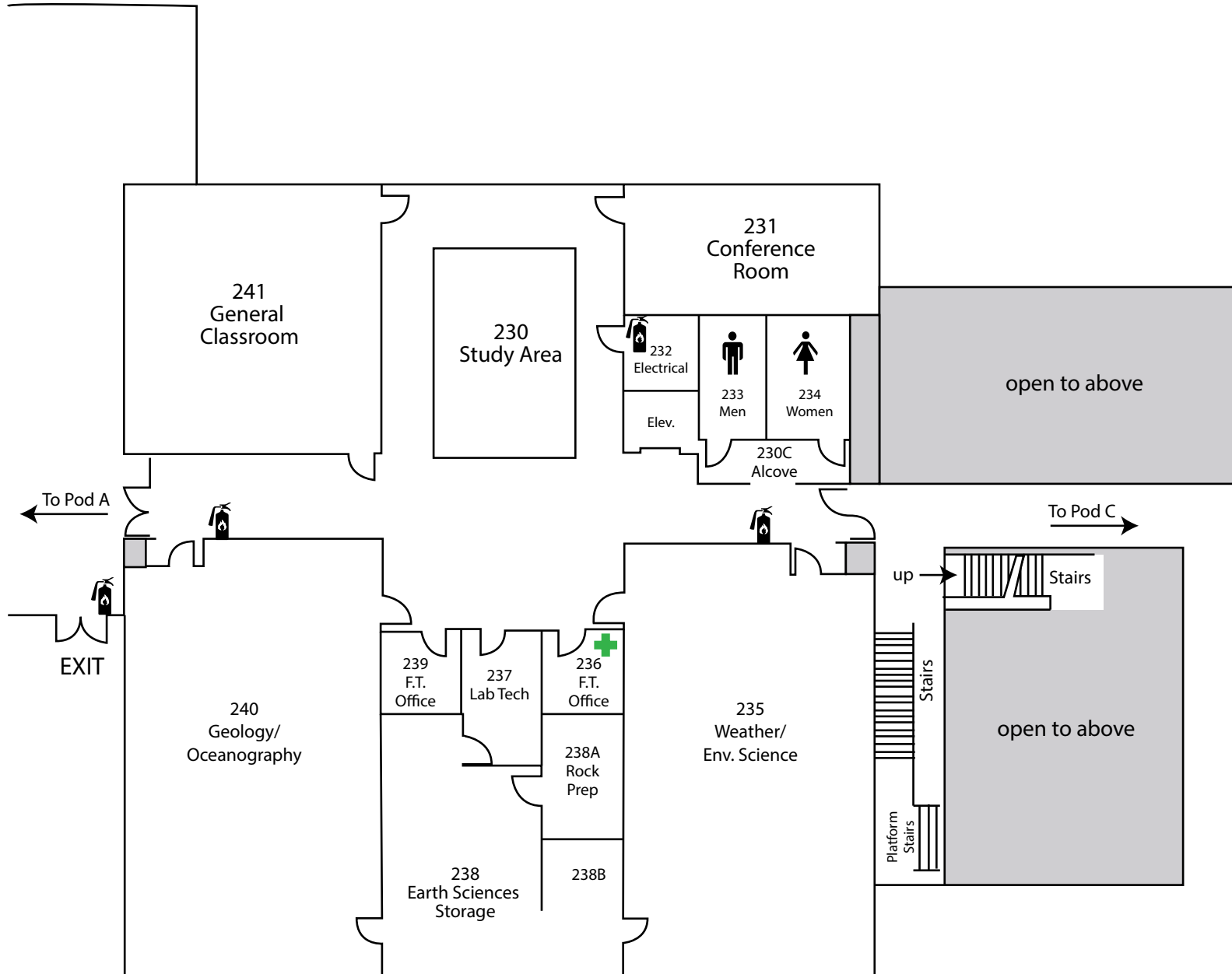


-  Fire Extinguisher
-  Defibrillator
-  First Aid Kit
-  Emergency Call Box

Rainier Building (RAI) Second/Blue Level - Pod B

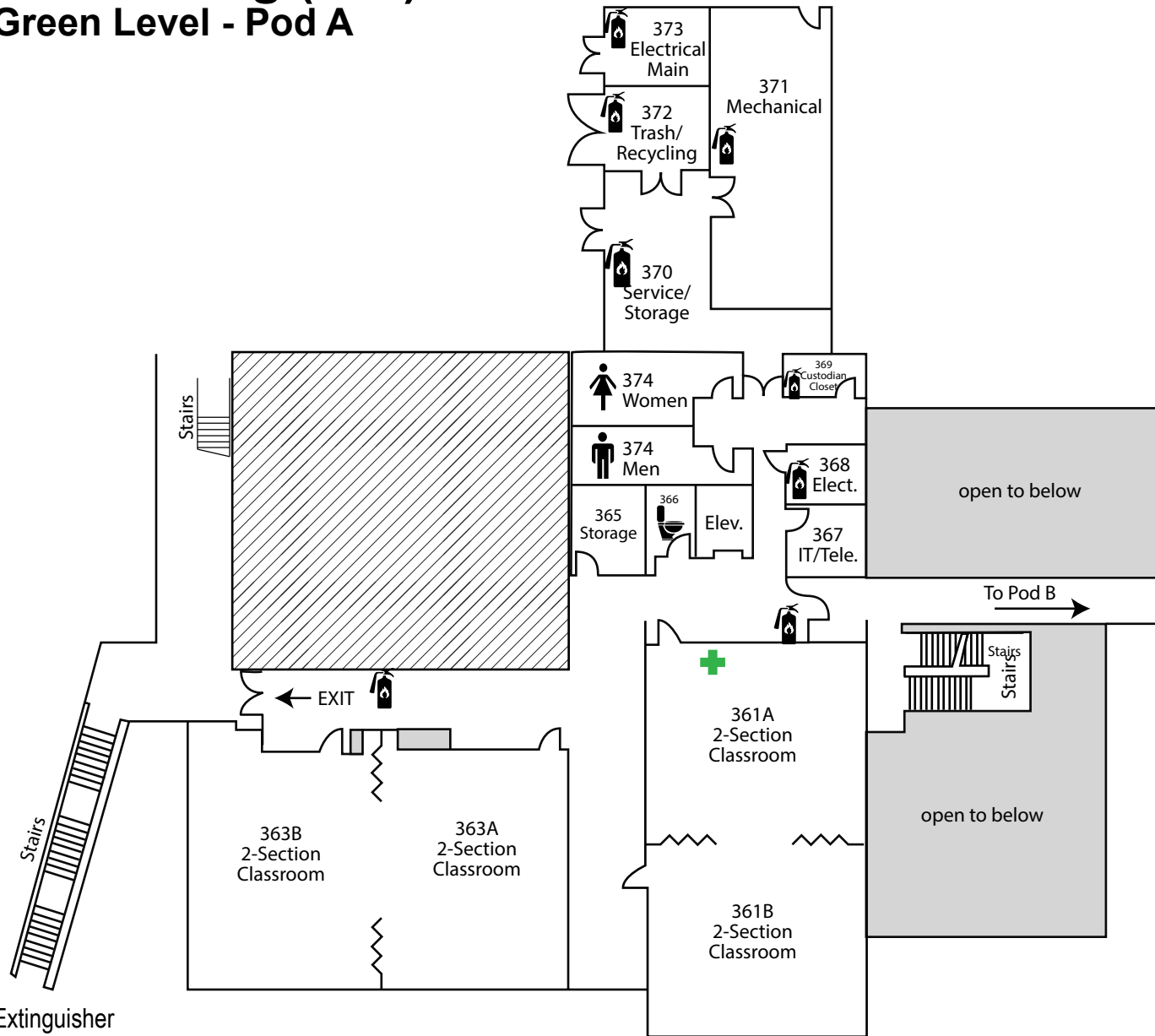
-  Fire Extinguisher
-  Defibrillator
-  First Aid Kit
-  Emergency Call Box

Updated 05-23-18



Rainier Building (RAI)

Third/Green Level - Pod A



 Fire Extinguisher

 Defibrillator

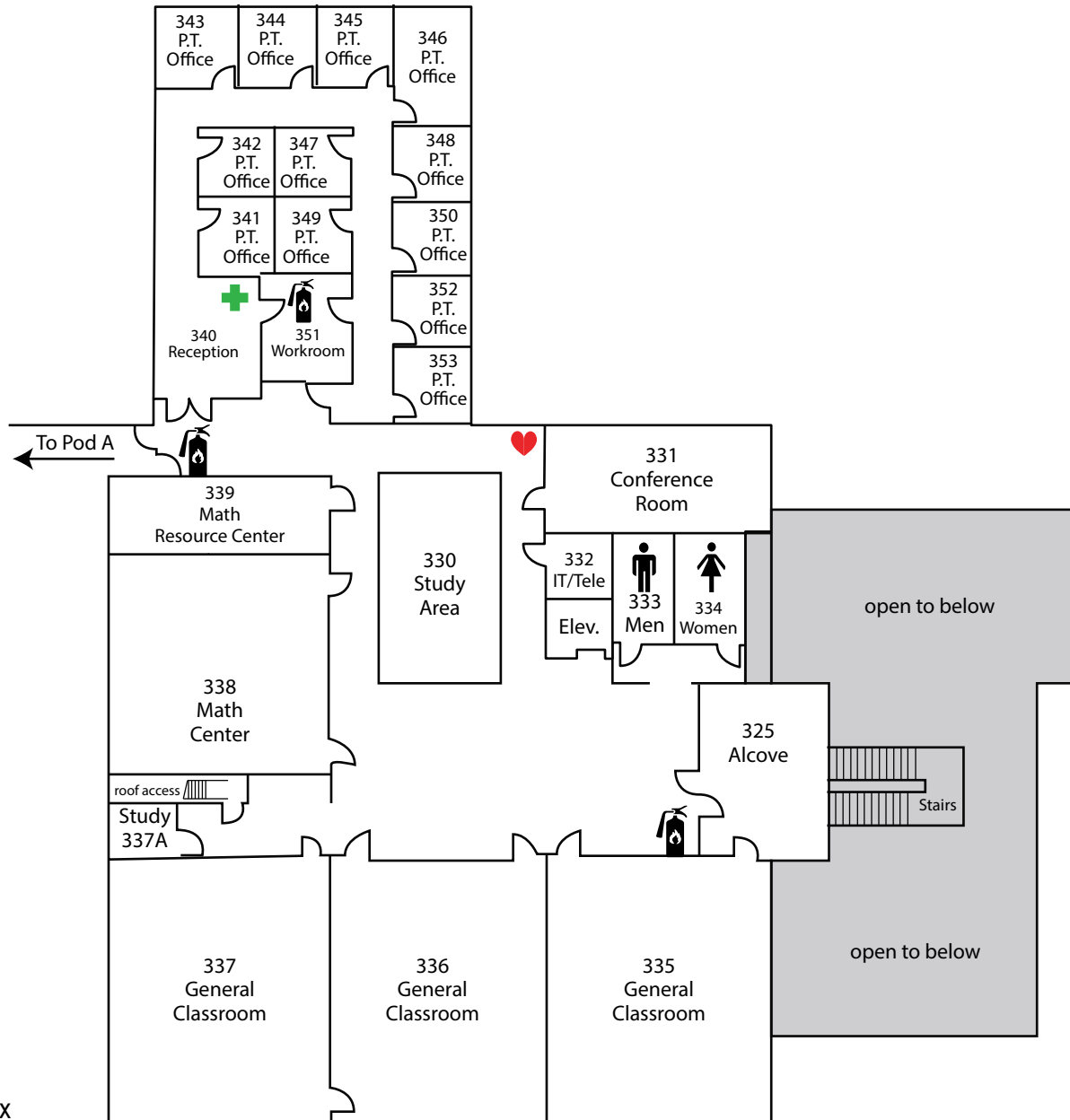
 First Aid Kit





 Emergency Call Box

 All Gender Restroom

Rainier Building (RAI)

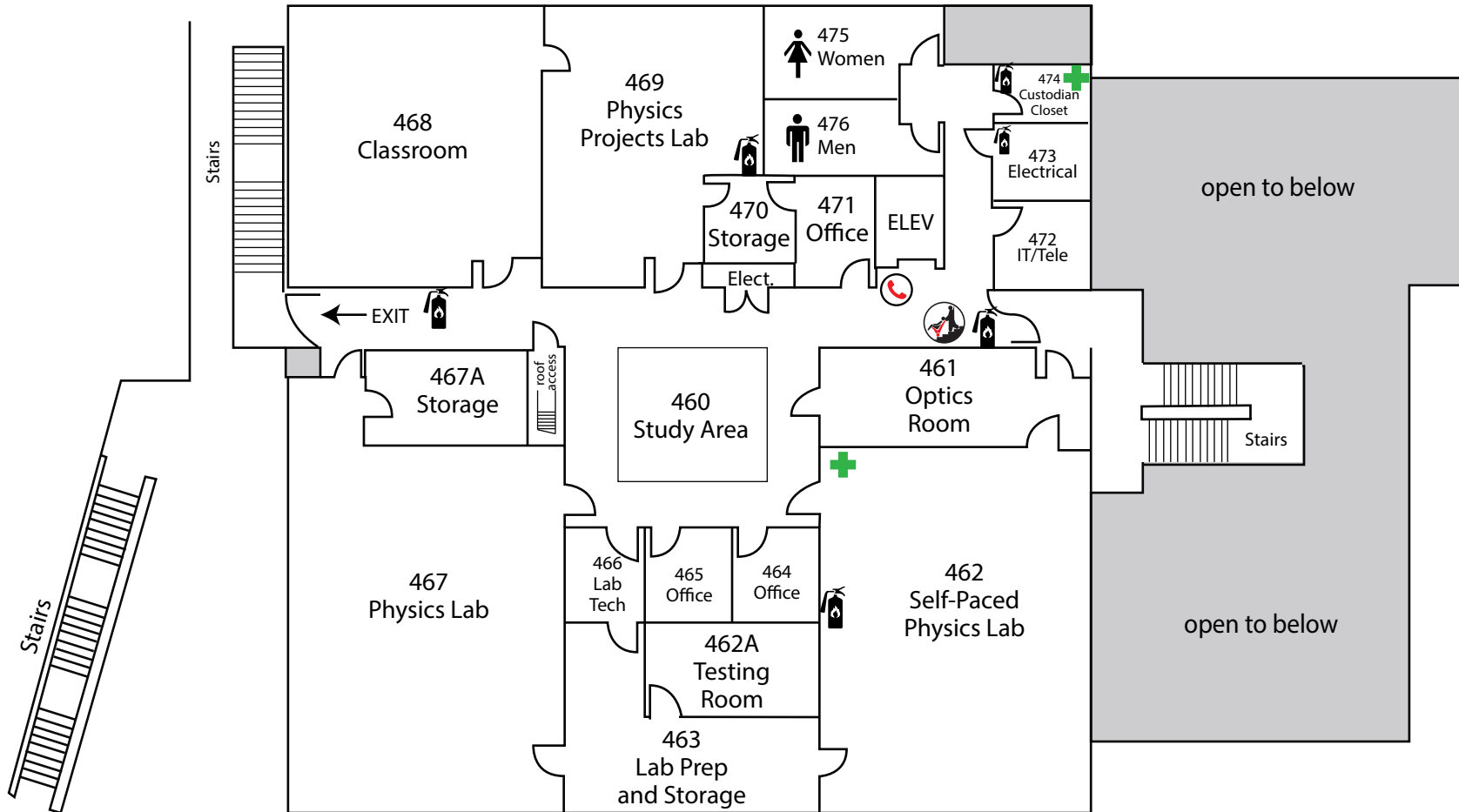
Third/Green Level - Pod B



-  Fire Extinguisher
-  Defibrillator
-  First Aid Kit
-  Emergency Call Box

Rainier Building (RAI)

Fourth/Yellow Level - Pod A



 Fire Extinguisher

 Defibrillator

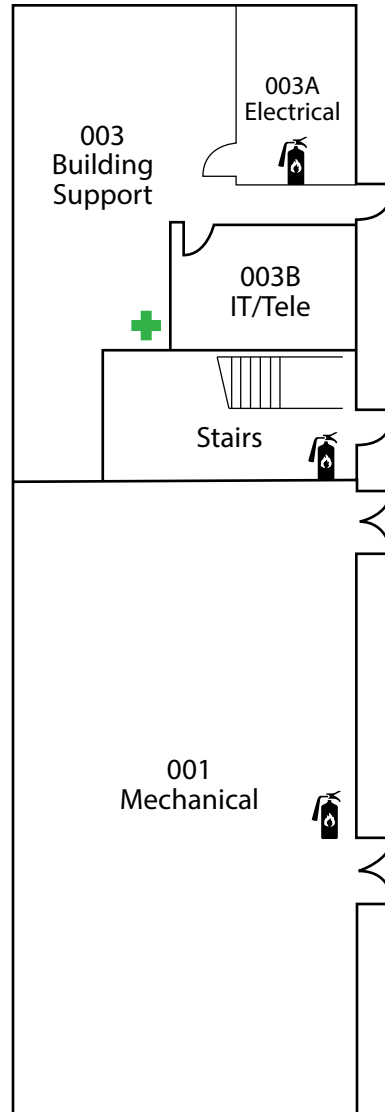
 First Aid Kit

 Emergency Call Box

 Evacuation Chair

Rainier Building (RAI)


Basement Level - Pod C



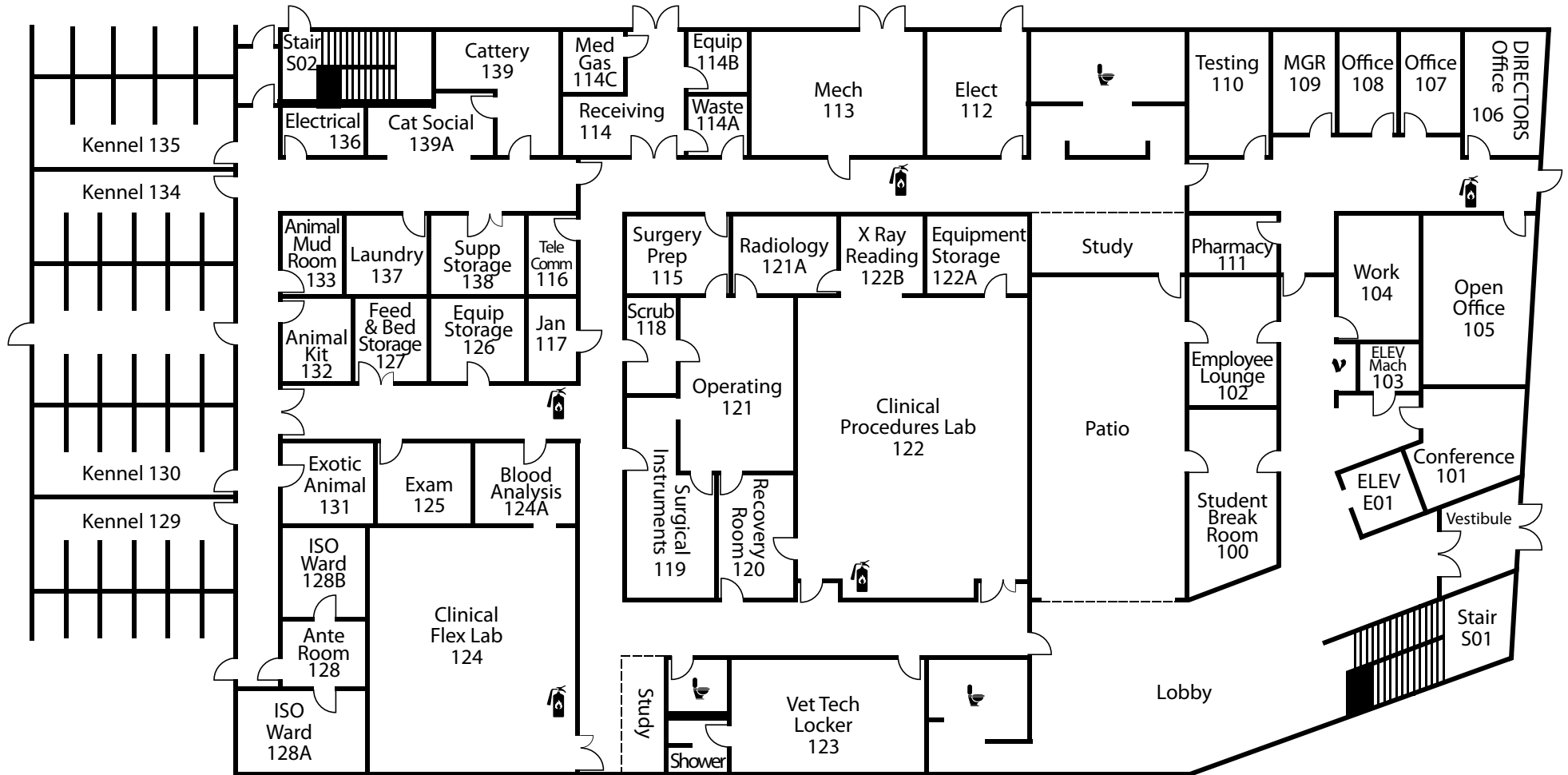
 Fire Extinguisher




 Defibrillator

 First Aid Kit

 Emergency Call Box

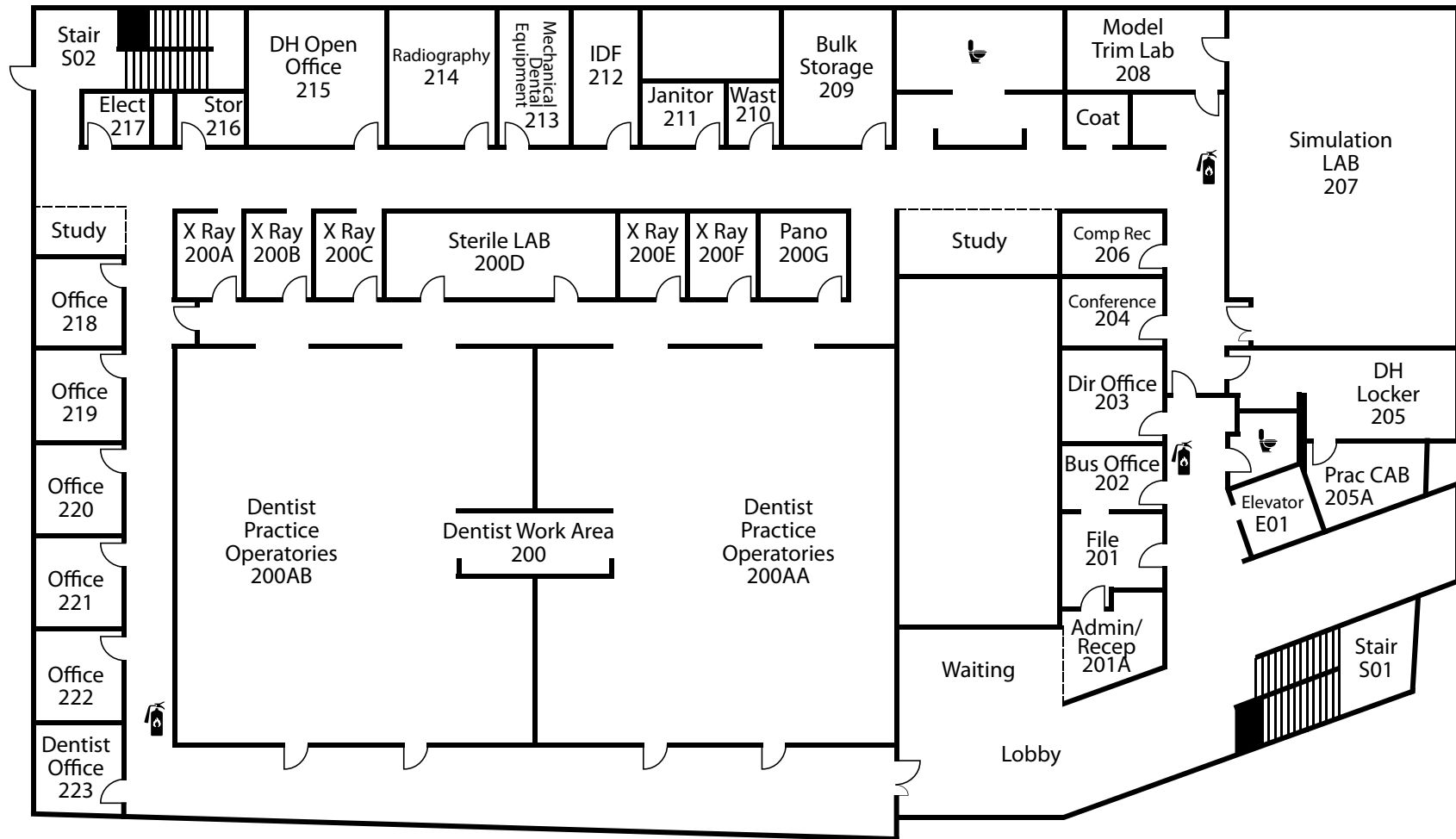
Glacier Level 1



-  All Gender Restroom
-  Fire Extinguisher
-  Vending Machine

Glacier

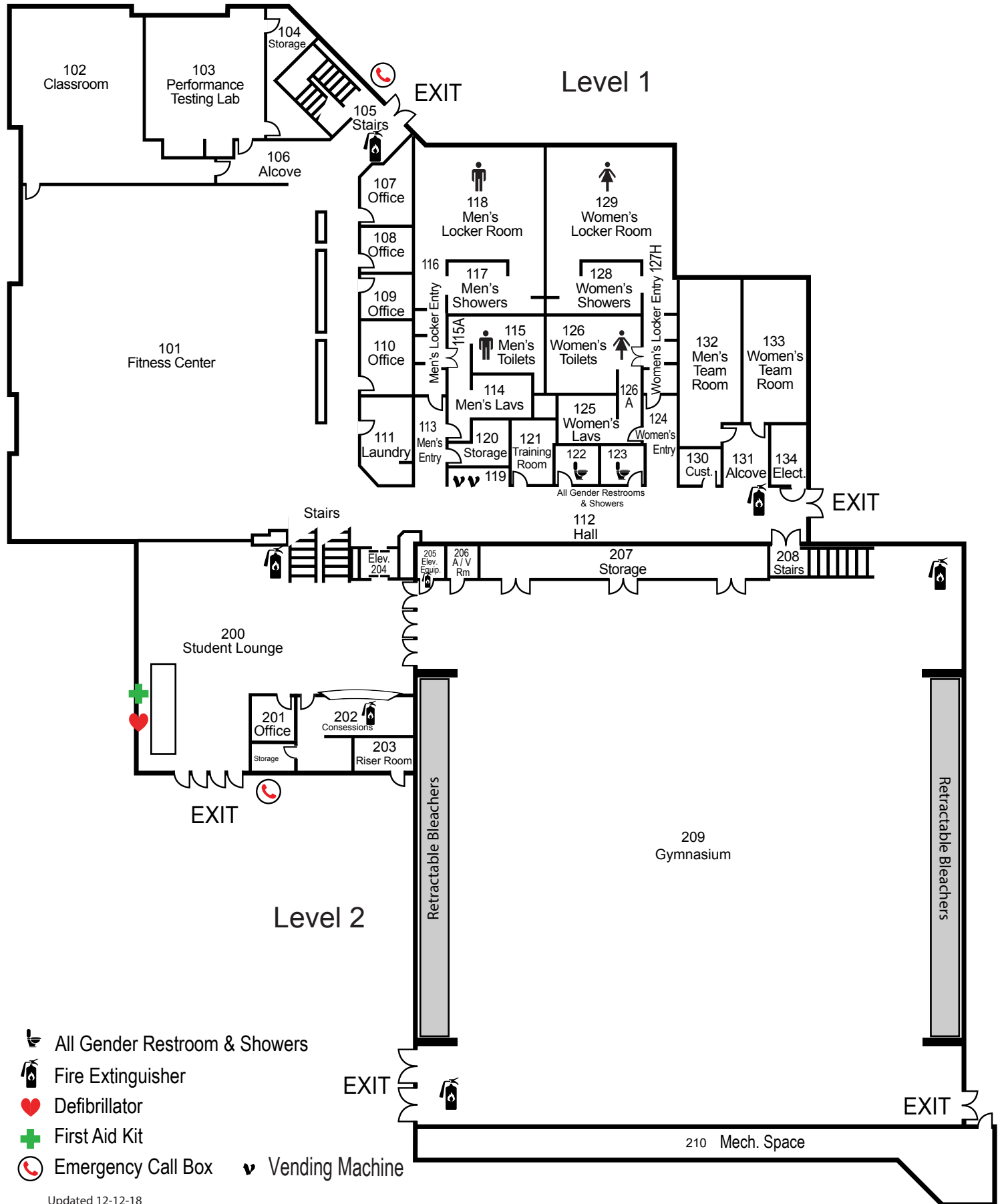
Level 2



-  All Gender Restroom
-  Fire Extinguisher

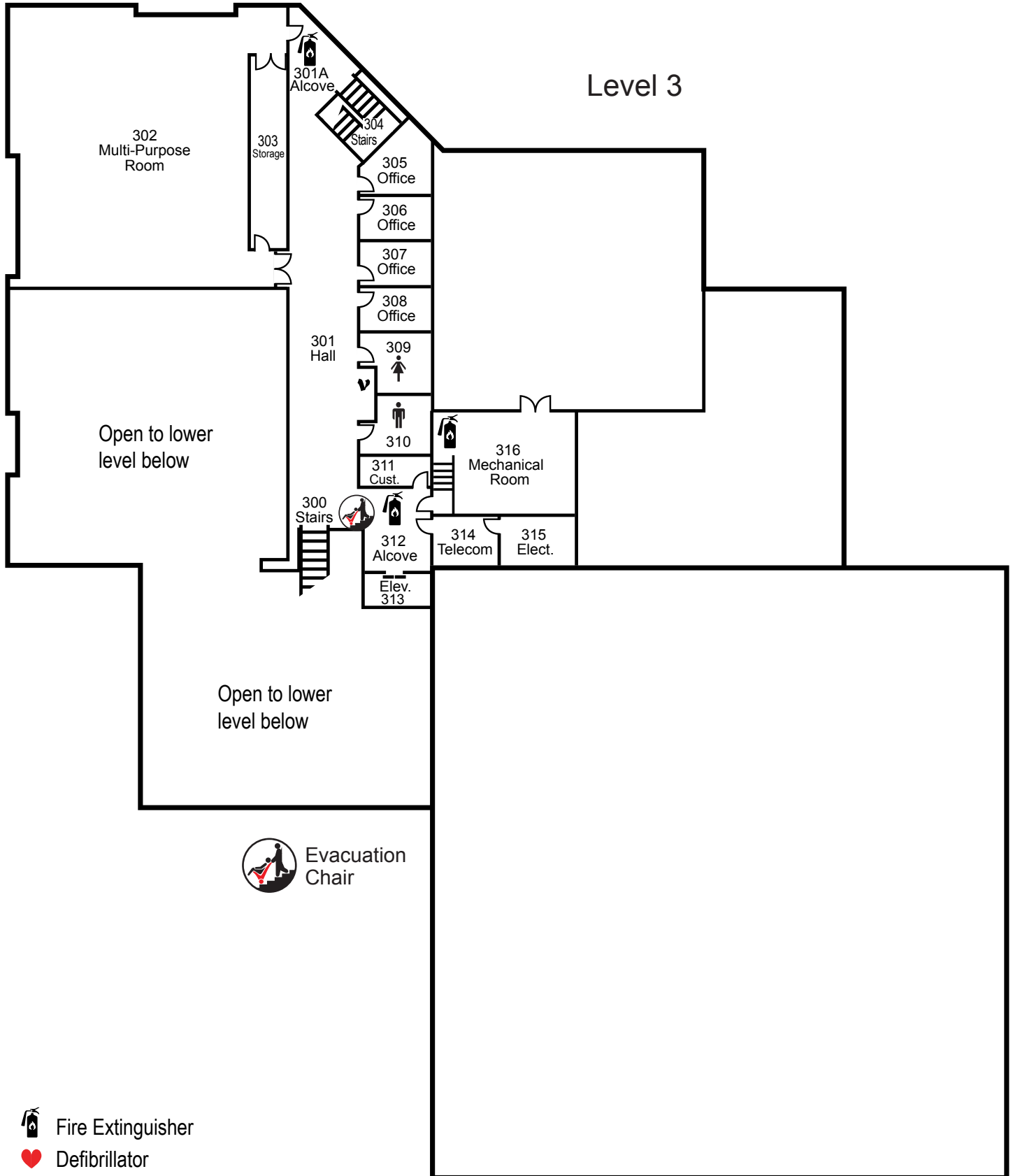
Health Education Center (HEF)

Fort Steilacoom



Health Education Center (HEF)

Fort Steilacoom



 Fire Extinguisher

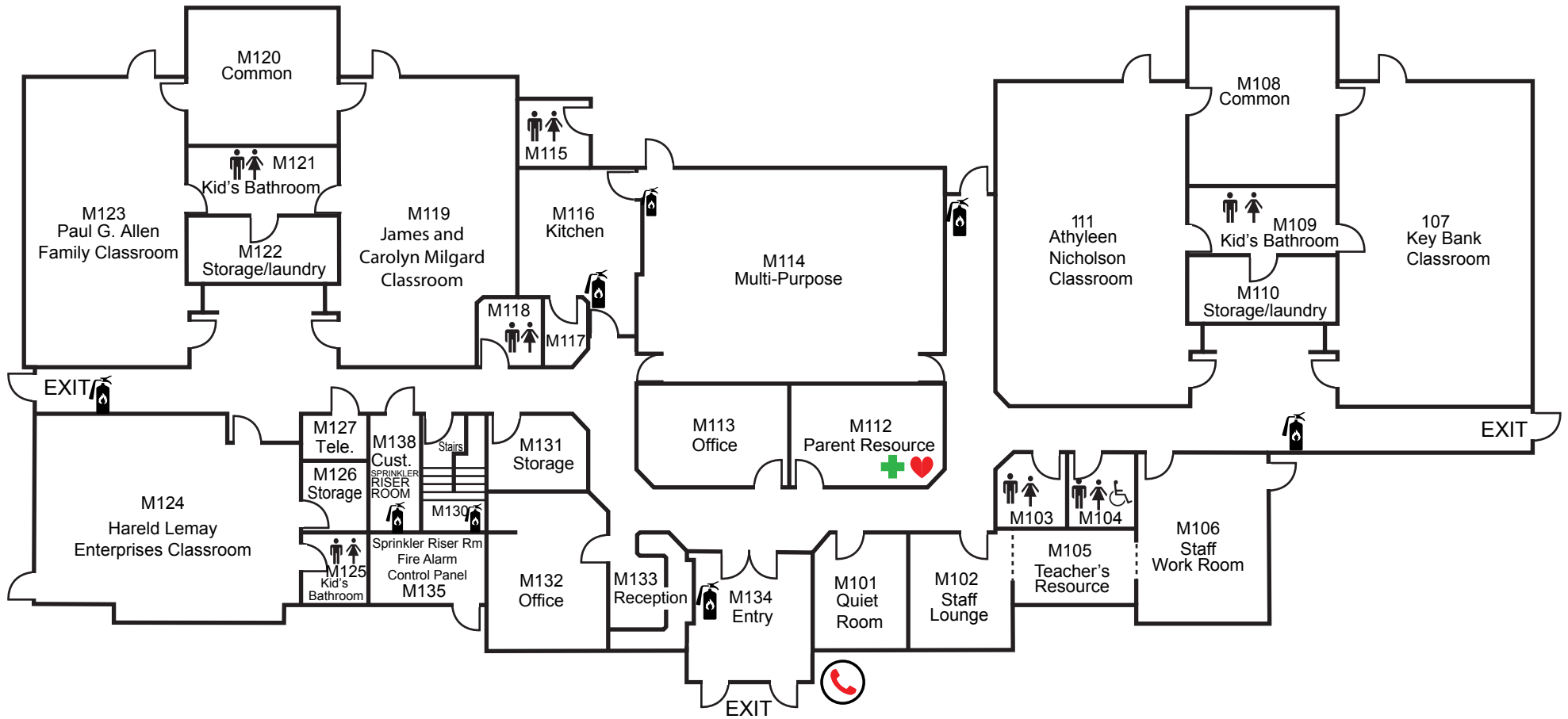
 Defibrillator





 First Aid Kit

 Emergency Call Box

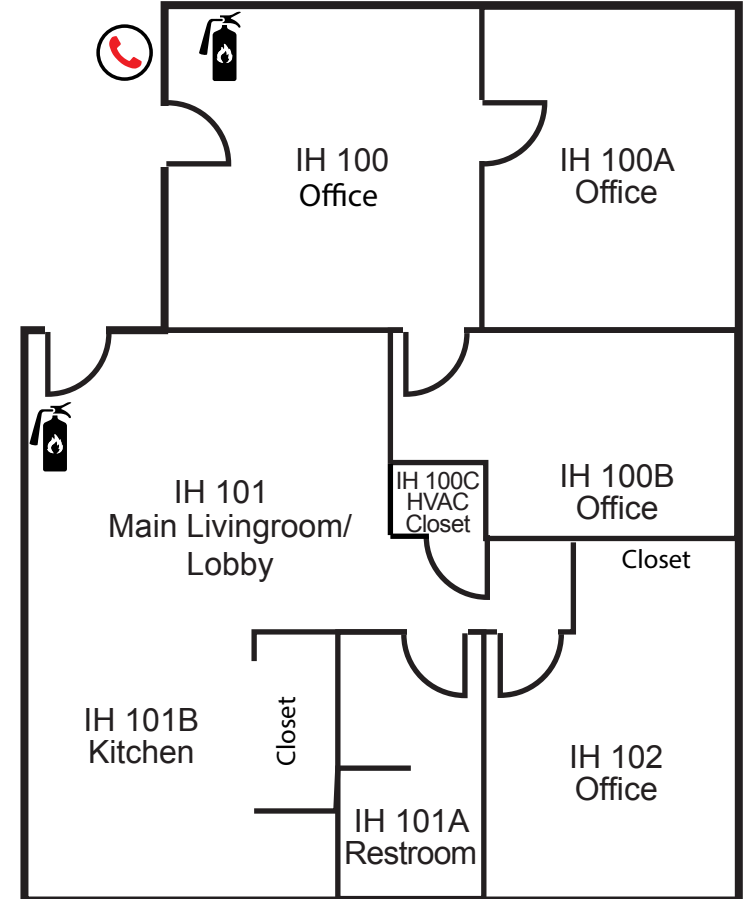
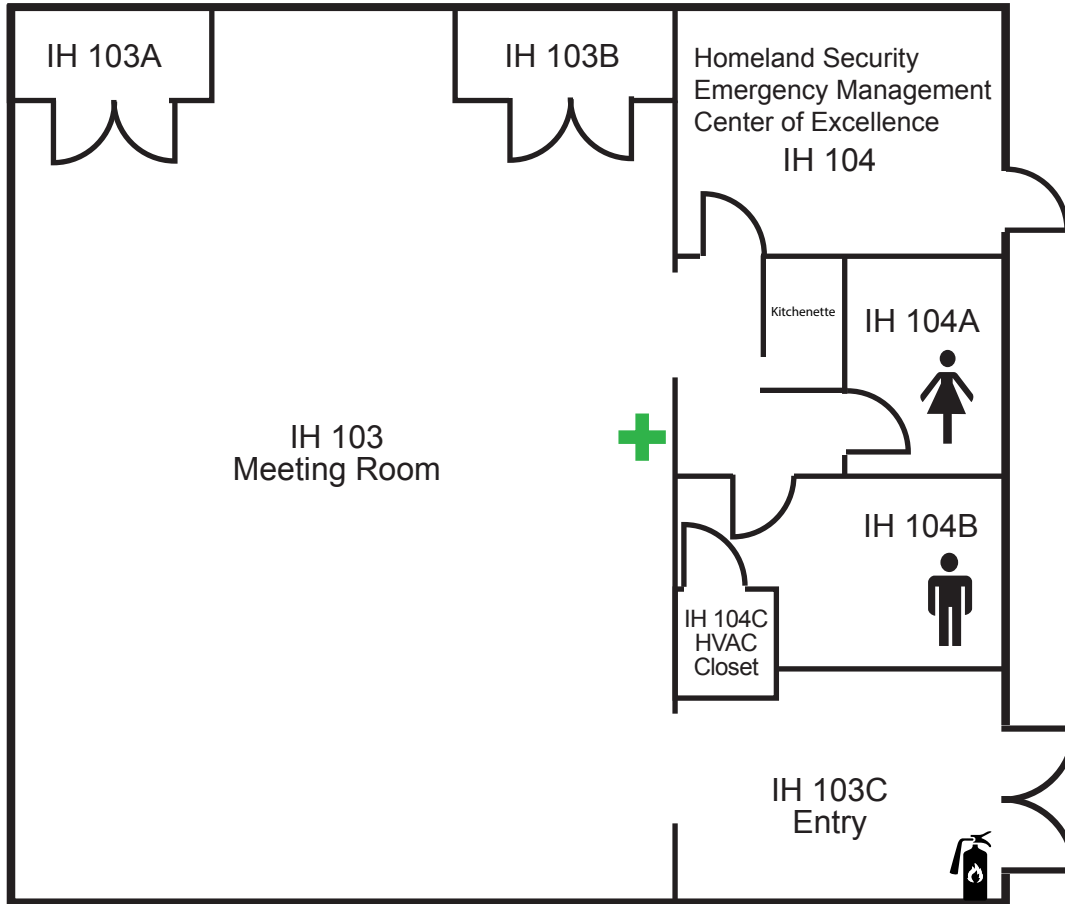
 Vending Machine





Milgard Child Development Center (CDF)



-  Fire Extinguisher
-  Defibrillator
-  First Aid Kit
-  Emergency Call Box

International House (IH)



-  Fire Extinguisher
-  Defibrillator
-  First Aid Kit
-  Emergency Call Box