

COMMUNITY & CONTINUING EDUCATION

ukulele
campfire
songs

PAGE
22→



SPRING QUARTER 2019
NONCREDIT COURSES



www.PierceCE.com



17 Spring Birds of Washington State



19 Spinning with Amber Garden



19 Worm Bin Composting



15 Connect with your Smart Phone



17 Beginning and Intermediate Digital Photography

TABLE OF CONTENTS

PERSONAL ENRICHMENT

- 13 Art & Creativity
- 14 Body, Spirit, Mind & Soul
- 15 Computers & Technology
- 15 Career & Trade Skills
- 16 Dance
- 16 Writing
- 17 Explore & Travel
- 17 Photography
- 18 Home & Garden
- 19 Fitness
- 19 Language
- 20 Healthy Eating
- 21 Outdoor Pursuits
- 21 Personal Finance
- 22 Music & Voice
- 23 Travel

ONLINE PROFESSIONAL DEVELOPMENT (*noncredit*)

Check out our full range of online professional development opportunities starting on **page 24**.

THREE EASY WAYS TO REGISTER

3

Online
www.PierceCE.com

By phone
253-864-3330

In person
1601 39th Ave. SE
Puyallup, WA 98374
ADM Bldg. Room 115

Make AND Take!

What's better than taking a class?
How about taking a class, making something, then taking it home!
Look for the **M** for this quarter's make and take classes.

HOW TO READ THIS SCHEDULE

| | | | |
|--------------------------------------|---|---|---|
| Course Title | → | Microsoft Excel 2016, Beginning | |
| Course Description | → | Learn the basics of Microsoft Excel in this two-session course. | |
| Item No. (required for registration) | → | Item S030 | PUY CTR 276 |
| Course Day(s) | → | Tuesday and Thursday | 2 Sessions: April 23 and 25 |
| | | Stocke | |
| | | Fee: \$139 | 6-9 p.m. |
| | | Instructor | Course Location (site/bldg/room) |
| | | | Course Date(s) |

← Course Fee
← Course Times

ART & CREATIVITY

NEW! Drawing: Pencils and Ink

If you are new to drawing or just want to learn new skills, this is the course for you! You will learn to draw from observation as well as other techniques. Line quality and shading methods will be explored, plus quick sketch techniques using pencils, pen and ink. *Request a supply list by emailing ce-questions@pierce.ctc.edu.*

Item S005 PUY AAH 236 Fee: \$129
Monday 5:30-7:30 p.m.
Ward 6 sessions: April 8 to May 13

NEW! Alcohol Ink on Metal M

Experiment with free-flowing alcohol inks by playing on metal surfaces! Embellish a metal garden tin (6.25" high) with a colorful explosion of your creativity. Then also make your own vivid foil wrapping paper. Ideas for jewelry and additional projects included. *A \$5 supply fee payable to the instructor is due at the beginning of class.*

Item S023 PUY LSC 150 Fee: \$39
Saturday 9-11:30 a.m.
Werley 1 session: May 11

NEW! Marbling on Silk M

Come play with marbling on silk! Maybe you've marbled on paper, but have you tried marbling on fabric? Make and take four pieces of 11 x 11 inch beautifully dyed silk. Ideas for additional projects included. *A \$10 supply fee payable to the instructor is due at the beginning of class.*

Item S098 PUY LSC 150 Fee: \$39
Saturday 9-11:30 a.m.
Werley 1 session: April 27

NEW! Paper Flowers: Tulips M

In this new workshop, you will learn to make incredibly detailed paper flowers. You will receive a paper flower kit designed by Artist Sarah Yakawonis. Class includes live demonstrations, one-on-one help, detailed color instruction booklet and extra supplies so you can continue making flowers at home. Sarah has also produced her own instructional videos to assist you. Kit includes enough supplies to make 6 tulips. *A \$20 supply fee payable to the instructor for the cost of the kit is due at the beginning of class. Please bring a sharp pair of scissors, wire cutters and a vase.*

Item S010 PUY LSC 126 Fee: \$59
Saturday 10 a.m. to 2 p.m.
Yakawonis 1 session: April 27



NEW! Play with Clay: Beginning Pottery M

In this beginning hand-built pottery class, you will learn the basics of slab-building and designing a small planter in a low-key, easy to understand, hands-on workshop. No matter your experience level, it will be a chance to toss some clay and create! Class will be meeting in the instructor's barn so wear your play clothes and prepare for the weather. (Remember, clay is mud). *A \$10 supply fee payable to the instructor is due at the beginning of class.*

Item S006 RRC Fee: \$39
Saturday 10 a.m. to noon
Stuart 1 session: April 13

Item S007 RRC Fee: \$39
Saturday 1:30-3:30 p.m.
Stuart 1 session: April 13

Item S008 RRC Fee: \$39
Saturday 10 a.m. to noon
Stuart 1 session: June 15

Item S009 RRC Fee: \$39
Saturday 1:30-3:30 p.m.
Stuart 1 session: June 15

The Roost at Roddy Creek (RRC)
6103 128th St. E. Puyallup, WA 98373

Paper Flowers: Van Gogh Irises M

If you love Van Gogh's beautiful irises, why not learn to make your own using specially designed paper! Artist Sarah Yakawonis provides beautiful flower kits that contain all the supplies you will need to make nine Van Gogh irises. The class includes live demonstrations, one-on-one help, a detailed color instruction booklet and extra supplies so you can continue making flowers at home. Sarah has also produced her own instructional videos to assist you. *A \$35 supply fee payable to the instructor for the cost of the kit is due at the beginning of class. Please bring a sharp pair of scissors, wire cutters and a vase.*

Item S011 PUY LSC 150 Fee: \$59
Saturday 10 a.m. to 2 p.m.
Yakawonis 1 session: May 18

NEW! Saturday Watercolor Workshop: Roses

Enjoy spending a fun day painting roses with simple drawings and using only six colors. Instructor Judith Frost will lead you through a step-by-step process to create simple, lovely rose paintings with strong vibrant colors. You'll be able to follow along with her as she creates these beautiful paintings. Skill level is for beginning to advanced students. Bring a snack for a quick lunch break. *Request a supply list by emailing ce-questions@pierce.ctc.edu.*

Item S004 PUY AAH 238 Fee: \$59
Saturday 10 a.m. to 2 p.m.
Frost 1 session: April 27

NEW! Saturday Watercolor Workshop: Landscapes

Enjoy a fun day painting simple landscapes with sky, land and mountains using only seven colors. Instructor Judith Frost will lead you through a step-by-step process using simple drawings to create paintings with dramatic lights and darks. You'll be able to follow along with her as she creates these landscape paintings. All skill levels are welcome. Bring a snack for a quick lunch break. *Request a supply list by emailing ce-questions@pierce.ctc.edu.*

Item S003 PUY AAH 238 Fee: \$59
Saturday 10 a.m. to 2 p.m.
Frost 1 session: May 4

Saturday Watercolor Workshop: Notecards

Come spend a fun Saturday afternoon creating wonderful, one-of-a-kind watercolor notecards. You'll learn to paint wet washes, letting the colors blend as they may; the essence of transparent watercolor painting. Washes are perfect for creating dreamy landscapes, skies and floral details. This is a fun workshop! *Request a supply list by emailing ce-questions@pierce.ctc.edu.*

Item S002 PUY AAH 238 Fee: \$49
Saturday 1:30-4:30 p.m.
Ward 1 session: April 13

NEW! Watercolor: Flora & Fauna

Flora and fauna refers to the plants and animals of an environment. You'll choose your subject from your own garden or pets, or from photos. This six-week course is for all skill levels. We will explore washes, wet-on-wet and dry brush techniques. You will paint from observation and various techniques. *Request a supply list by emailing ce-questions@pierce.ctc.edu.*

Item S001 PUY AAH 238 Fee: \$129
Thursday 5:30-7:30 p.m.
Ward 6 sessions: April 11 to May 16



Tai Chi Chuan, Beginning 🔥

Tai Chi Chuan is a centuries-old Chinese exercise system that promotes health, relaxation and self-cultivation. It can be learned by anyone regardless of age, gender or athletic ability. The emphasis is on establishing a solid foundation of fundamentals.

Item S012 **PUY HEP 206** **Fee: \$99**
Saturday **9-10 a.m.**
Llanos **8 sessions: April 13 to June 1**

Tai Chi Chuan, Intermediate

This course is for students who have completed Beginner's Tai Chi Chuan. Course content reviews Section 1A of the Yang Family Long Form, moving into Section 1B (completing the form) and into a deeper understanding of breath and movement while following the classics of Tai Chi. Your body, mind and spirit will flow into new places!

Item S013 **PUY HEP 206** **Fee: \$99**
Saturday **10:15-11:15 a.m.**
Llanos **8 sessions: April 13 to June 1**

Tai Chi Chuan, Advanced

This course is for students who have completed Intermediate Tai Chi Chuan. Course content reviews Section 2A of the Yang Family Long Form, moving into Section 2B (completing the form) and into a deeper understanding of breath and movement while following the classics of Tai Chi.

Item S014 **PUY HEP 206** **Fee: \$99**
Saturday **11:30 a.m. to 12:30 p.m.**
Llanos **8 sessions: April 13 to June 1**

BODY, SPIRIT, MIND & SOUL

Evening or Morning Vinyasa Yoga

This open level yoga course is offered on Thursday evenings or Saturday mornings. We offer modifications and open levels for beginners and experts alike. We'll help guide you to build strength, flexibility and balance while flowing through yoga poses. By moving mindfully and linking breath with movement, you will energize your body and still your mind, leaving class with a calm and peaceful glow. *Please bring a yoga mat to class.*

Item S019 **DTNW** **Fee: \$119**
Thursday **6-7 p.m.**
DTNW **11 sessions: April 11 to June 20**

Item S020 **DTNW** **Fee: \$109**
Saturday **9-10 a.m.**
DTNW **10 sessions: April 13 to June 15**

NEW! Restorative Yoga in the Afternoon

Designed for participants that are new to yoga or experiencing difficulties in a regular yoga practice with physical or emotional trauma. The classes will incorporate gentle and supportive postures, meditative and mindfulness exercises along with sequences through correct body alignment. *Please bring a yoga mat to class.*

Item S021 **DTNW** **Fee: \$119**
Wednesday **2:30-3:30 p.m.**
DTNW **11 sessions: April 10 to June 19**

Dance Theater Northwest (DTNW)
 2811 Bridgeport Way W #24, University Place 98466

Navigating the Sky on a Personal Journey with Astrology and Tarot

This popular recurring course uses astrology and tarot to help develop and understand your intuitive powers. We ask that you already have a basic understanding of astrology to get the most benefit. We'll help with the knowledge of cycles that help you decide which way to go on issues, celebrity charts, compatibility charts and how to work with daily transits of the planets. *Bring your favorite tarot deck to class.*

Item S018 **FS OLY 203** **Fee: \$99**
Thursday **7-9 p.m.**
Tognetti **7 sessions: April 11 to May 23**

Chakra Workshop **M**

Chakras are our bodies' inner energy centers that help us function on all levels. When we activate our chakras, we help heal emotional wounds and physical ailments, balance our circadian rhythms and enhance inner peace. This class covers the basics of the seven main chakras and how to align them using crystal chakra kits, essential oils, meditation and herbs. Class includes a handout, chakra test and eBook. *Chakra manual cost: \$15. Other kits and items also available for sale.*

Item S015 **PUY LSC 111** **Fee: \$29**
Saturday **10 a.m. to noon**
Bailey **1 session: June 1**

Purify & Protect Smudging **M**

Smudging is the ancient practice of burning fragrant leaves and flowers to purify an area or provide protection from negative energy. In this workshop, you will learn smudging techniques, meditations and which plants are safe to use for smudging. You will also make your own cedar smudge stick and smudge herb blend kit with shell and feather. *A \$10 supply fee payable to the instructor is due at the beginning of class. Class includes handout, guide and eBook.*

Item S017 **PUY LSC 111** **Fee: \$29**
Saturday **12:30-2:30 p.m.**
Bailey **1 session: June 15**



Crystal Connections **M**

Crystals and gemstones are nature's energy sources helping us ground, protect and increase our health and happiness. Learn how to identify many common stones, their uses, meanings and how to make a power grid. The last part of the class you will make your own gemstone kit. *A \$10 supply fee payable to the instructor is due at the beginning of class. Class includes handout, guide and eBook.*

Item S016 **PUY LSC 111** **Fee: \$29**
Saturday **10 a.m. to noon**
Bailey **1 session: June 15**

COMPUTERS & TECHNOLOGY

Connect with Your Smartphone

If you have your first smartphone and are a little intimidated by it, this is the class for you. You'll learn how to increase the font size to allow for better viewing, how to use maps and get directions, take photos, share photos with family, make video calls, use coupons at the store, shop online, read websites, play basic games and learn about the many apps available to you. Taught by our most popular instructor, Mike Stocke.

Item S027 **PUY CTR 276** **Fee: \$69**
Wednesday **6-9 p.m.**
Stocke **1 session: April 17**

Using Microsoft Windows 10

In this new course, students will learn the features and functionality of the Windows 10 operating system for professional and personal use. Topics covered include accessing Windows 10, using Windows apps and desktop applications, working with files and folders, using Edge, customizing the environment, and installing and removing devices and using security features. *Quick Guide included in course fee.*

Item S033 **PUY CTR 276** **Fee: \$129**
Tuesday and Thursday **6-9 p.m.**
Stocke **2 sessions: June 4 and 6**

CAREERS & TRADE SKILLS

Career Interest Assessment

Learn how your skills, personality type and interests can help you find a career that best suits you. You will participate in the Myers Briggs Type Indicator (MBTI) and Campbell's Interest and Skill Survey (CISS). When your results are assessed, an interpretation session will be scheduled with our advisor. Walk away with new tools to guide you into your new and exciting future!

Item S022 **Fee: \$129**
Enroll anytime during spring quarter.
ARR (to be arranged) **1 session**

Stay Active and Independent for Life (SAIL) Program Leader Training

If you are a health, fitness, nursing or senior care professional, join our online SAIL program. You will get the training you need to lead SAIL exercise sessions to assist older adults to improve strength, balance and assist them with their ability to perform daily tasks. This course is approved by the Washington State Department of Health and the National Council on Aging. Continuing Education Units (CEUs) are included in the course fee. Space is limited. Don't be disappointed and register early.

Item 5799 **ONLINE** **Fee: \$199**
Register by April 4, 2019

Flagging and Traffic Control

Certified flaggers are responsible for worker and public safety during road construction, utility work and maintenance operations. Through visual movements and appearance, flaggers must establish authority and confidence so traffic will respond in time and consistently with the need to stop, change lanes, proceed more slowly or maneuver as necessary around the work site. This course prepares students to receive a Flagger Certification card, which is valid for three years in Washington, Oregon, Idaho and Montana. Students must be at least 18 years old. There is an open book test at the end of class in which you must have a passing score of 80 percent in order to receive your certification. *Book included in course fee. Bring a sack lunch.*

Item W028 **PUY LSC 128** **Fee: \$69**
Saturday **9 a.m. to 4 p.m.**
Pollard **1 session: March 16**

Item S024 **PUY LSC 128** **Fee: \$69**
Saturday **9 a.m. to 4 p.m.**
Pollard **1 session: April 13**

Item S025 **PUY LSC 128** **Fee: \$69**
Saturday **9 a.m. to 4 p.m.**
Pollard **1 session: May 4**

Item S026 **PUY LSC 128** **Fee: \$69**
Saturday **9 a.m. to 4 p.m.**
Pollard **1 session: June 8**



Microsoft Excel 2016, Beginning



Learn the basics of Microsoft Excel in six hours! Create worksheets with text, values and formulas, and then format them to make your data easy to read. Learn to link formulas between multiple worksheets. *Book included in course fee.*

Item S030 **PUY CTR 276** **Fee: \$139**
Tuesday and Thursday **6-9 p.m.**
Stocke **2 sessions: April 23 and 25**

Microsoft Excel 2016, Intermediate

Now that you have the basics, learn how to link worksheets and workbooks, apply advanced formatting and styles, sort and filter and use charting features. Prerequisite: Excel Beginning or equivalent experience. *Book included in course fee.*

Item S032 **PUY CTR 276** **Fee: \$139**
Tuesday and Thursday **6-9 p.m.**
Stocke **2 sessions: May 21 and 23**

Microsoft Word 2016, Beginning



Learn to open, create and save documents. Edit your document using cut, copy and paste functions. Apply character and paragraph formatting, set tabs and page breaks, adjust margins and use spell check and thesaurus features. *Book included in course fee.*

Item S028 **PUY CTR 276** **Fee: \$139**
Tuesday and Thursday **6-9 p.m.**
Stocke **2 sessions: April 9 and 11**

Computer Tune-Up

Learn to tune up and troubleshoot your own PC. You will gain valuable tips and use preventive methods to create a more stable system using Windows system utilities. Walk away with skills to resolve software and hardware issues. Become your own computer mechanic. *Please DO NOT bring your personal computer.*

Item S031 **PUY CTR 276** **Fee: \$139**
Tuesday and Thursday **6-9 p.m.**
Stocke **2 sessions: June 11 and 13**

Beginning Computers for 50+

Want to begin using a computer? Need practice using a mouse and keyboard? It's not as scary as you may think. Let our most popular instructor, Mike Stocke, patiently guide you through a checklist covering topics such as basic hardware, software and email. You will also learn how to set up an email account if you don't have one, how to save a file, how to save information to a flash or thumb drive, web browsing and so much more.

Item S029 **PUY CTR 276** **Fee: \$109**
Tuesday and Thursday **6-9 p.m.**
Stocke **2 sessions: May 28 and 30**

DANCE

NEW! Wedding Dance Workshop

Do you have a special wedding event in your future and need some assistance in making your dance look smooth and effortless? Whether you are a bride and groom, father and daughter, parents of the bride or groom or any other pair, you'll learn how to select your music, dance style, choreography, plus entrance and exit. Make your wedding dance experience come alive and become part of a wonderful memory. *Partners are recommended but not required. Wear smooth-soled shoes to enhance the dance experience.*

Item S034 **PUY HEP 206** **Fee: \$39**
Thursday **6-7 p.m.**
Behr **2 sessions: May 2 to 9**

WRITING

NEW! Write your Travel Memories

If you are interested in writing about your travel memories, then this course is for you! We will explore many of your great travel memories, whether you want to write about far-off places or a fun weekend in downtown Seattle. Most of the writing will be done in the form of personal travel narratives. There will be writing prompts, in-class writing, and the option for reading your work to the class. Don't let your memories slip into the past before you have written them down in a creative way so they can be remembered forever.

Item S097 **PUY LSC 126** **Fee: \$99**
Saturday **10 a.m. to noon**
McGillen **4 sessions: April 20 to May 11**

Beginning Adult/Teen Tap

Discover the fun and joy of Broadway style rhythm tap dance! Geared to adults and teens with an emphasis on basic rhythms and moves. Learn a new vocabulary: brush, flap and basic turns. *Tap shoes required.*

Item S037 **DTNW** **Fee: \$119**
Wednesday **6:40-7:40 p.m.**
DTNW **11 sessions: April 10 to June 19**

Beginning Adult/Teen Ballet

Join an increasing number of people who enjoy learning and experiencing the health benefits of ballet! You will learn the five classic ballet positions with correct body placement, 6-9 essential barre exercises, center exercises and the basic vocabulary of ballet. Ages 13 and up. All levels welcome. *Ballet shoes are required. You can contact the studio for additional information on dancewear attire for class. No class May 27.*

Item S038 **DTNW** **Fee: \$109**
Monday **6:40-7:40 p.m.**
DTNW **10 sessions: April 8 to June 17**

Dance Exercise 🔥

Need inspiration to keep going, stay in shape, have fun and lose weight? Dance exercise is a moderately paced workout with low impact aerobic dance moves and body toning with light weights, bands and stretches to upbeat music. All levels welcome, work at your own pace. Ages 13 and up. Indoor athletic shoes are required as well as modest athletic attire.

Item S036 **DTNW** **Fee: \$79**
Tuesday and Thursday **4:45-5:45 p.m.**
DTNW **22 sessions: April 9 to June 20**



Basic Ballroom Dance 🔥

In this fun introductory course, we'll give you and your partner the confidence to get out on any dance floor in any type of environment. The three types of dance rhythms covered will be the fox trot, or two-step, waltz and swing. *Partners are recommended but not required. Wear smooth-soled shoes to enhance the dance experience.*

Item S035 **PUY HEP 206** **Fee: \$99**
Thursday **6-7 p.m.**
Behr **5 sessions: May 16 to June 13**

Dance Theater Northwest (DTNW)

2811 Bridgeport Way W #24
 University Place 98466



READY TO REGISTER?

Go online at www.PierceCE.com or call 253-864-3330

POSSIBILITIES. REALIZED.

17

EXPLORE & TRAVEL

Secrets to Solo Travel Abroad

Want to travel abroad, but worried about going alone? In this workshop you'll gain invaluable insights from an experienced solo traveler. Learn tips and tools for staying safe; selecting destinations; finding travel buddies or local contacts; choosing best transport and accommodation options for single travelers; and, optimizing your single travel budget. Designed for men and women, and people traveling independently or solo on tours.

Item S039 **PUY LSC 171** **Fee: \$39**
Wednesday **6-8:30 p.m.**
Bare **1 session: April 24**

Secrets to Using Technology Abroad

Traveling abroad this summer and want to stay connected while overseas? This very informative workshop is designed for business and leisure travelers. Discover options for using smart phones and tablets overseas; best data plans; SIM cards; data security strategies; travel apps; backing up and more. Students should bring their devices for in-class activities. Even seasoned travelers will find this workshop very useful. Taught by a technology expert and world traveler who has stayed connected while traveling around the world.

Item S040 **PUY LSC 128** **Fee: \$39**
Saturday **10:30 a.m. to 1 p.m.**
Bare **1 session: April 20**



**Join Pierce College
on the Highlights of
England, Scotland and
Ireland Tour, Aug. 8-19!**
See page 23 for details.

Spring Birds of Washington State

A perfect class for beginner to intermediate level birders. Learn to identify over 205 spring bird species found in Washington. Includes identification of species, habitat and season, locations and tools needed. Also presented are birding techniques and ethics. Instructor David Kaynor is a member of the Washington Ornithological Society. *Please bring a copy of National Geographic Society Field Guide to North American Birds, 6th or 7th Edition.*

Item S044 **FS OLY 203** **Fee: \$59**
Wednesday **6:30-8:30 p.m.**
Kaynor **3 sessions: May 8 – 22**

Introduction to Washington Geology

The geological history of Washington state is one of the most fascinating geologic stories ever told. It's a tale of the breakup of ancient giant continents, the birth and death of great ocean basins, the collision of exotic islands, the uplift and wearing-away of generations of mountain ranges, enormous floods of molten lava, and great continental glaciers of the Ice Ages. You will also receive an introduction to geology, geologic time, erosion and deposition, how glaciers carved Washington state, volcanic Washington, Puget Sound geology, and three great floods of Washington's past. Fascinating local history!

Item S042 **FS OLY 203** **Fee: \$79**
Wednesday **6:30-8:30 p.m.**
Kaynor **4 sessions: April 10 to May 1**

PHOTOGRAPHY

Beginning & Intermediate Digital Photography

This fun course is open to beginning and intermediate-level photographers. You'll learn about lighting, composition, focusing techniques and more. You will receive a 200+ page reference manual of all materials covered in class. Point-and-shoot as well as DSLR cameras welcome. *Bring your camera and fully charged batteries.*

Item S095 **PUY AAH 133** **Fee: \$159**
Wednesday **6:30-8:30 p.m.**
Kehr **5 sessions: April 10 to May 8**

Travel Photography Workshop

If you're planning to travel, this fun workshop will help you capture stunning location shots as well as photos that will help tell your travel story. You'll learn about must-have gear and tips and tricks for travel photography. *Bring your camera and fully charged batteries. A 100-page reference manual is included. Open to all skill levels.*

Item S096 **PUY AAH 133** **Fee: \$49**
Wednesday **6:30-8:30 p.m.**
Kehr **1 session: May 29**



**Take your photography to the
next level with our online courses!**
See page 27.



PERSONAL ENRICHMENT

HOME & GARDEN

Skip Into Spring with Floral Design **M**

In this fun and creative course, you will learn the tips and tricks of floral design using spring garden flowers such as Delphinium, Snapdragon, Daisies, Tulips, Solidago, Monte Casino, Iris, Liatris, Lily, Statis, Roses, Thistle, Wax flower, Larkspur, Dianthus and more. Each week, you'll bring home your own arrangement. *Please bring your imagination, floral cutters, floral knife, wire cutters and scissors to each class. No class May 9.*

Item S069 **PUY LSC 150** **Fee: \$189**
Thursday **6-8 p.m.**
Johnson **5 sessions: April 11 to May 16**

Herb and Tea Gardens

There is nothing like the taste of fresh herbs and flowers straight from the garden! Learn how to create, care and harvest for your own organic herb and tea garden for cooking, preserving and making amazing tea beverages. *Demonstration plants for sale after class. Includes an eBook and handout.*

Item S062 **PUY LSC 111** **Fee: \$29**
Saturday **Noon to 1:30 p.m.**
Bailey **1 session: May 11**

NEW! Food Dehydration

This class provides an introduction to food dehydrating. Learn how to prepare your food to achieve the best results of dehydrating your food. This is a great way to preserve your summer harvest or local farmer's market purchases for your pantry. This class will help you use one of the oldest food preservation methods known to man. We'll discuss methods of drying, selecting the correct dehydrator for your use and proper storage once your product is dehydrated. *Food samples will be available to taste.*

Item S059 **PUY CDP** **Fee: \$39**
Saturday **10 a.m. to noon**
Basquez **1 session: April 20**

Beginning Canning

Summer is coming soon and this course will teach you how to home can your garden's fresh bounty or local farmer's market fresh finds. You will become familiar with canning equipment and how to safely can for your pantry. Home canning is great for special diets, saving money on your food budget and providing good, wholesome food for you and your family. *A \$3 cash supply fee is due to the instructor at the beginning of class.*

Item S060 **PUY CDP** **Fee: \$39**
Saturday **10 a.m. to noon**
Basquez **1 session: May 18**

Beginning Pressure Canning

Have you ever thought about canning vegetables? What about canning meat? In this introductory course on home pressure canning, we'll familiarize you with how to safely pressure can vegetables and meat in your own home. This class is a great way to take the "scary" out of pressure canning. Join us and we'll show you how to operate a home pressure canner. We'll talk canning and do some sampling of what you can safely home can from your summer garden or farmer's market. It's a great way to add to your home pantry.

Item S061 **PUY CDP** **Fee: \$39**
Saturday **10 a.m. to noon**
Basquez **1 session: June 15**

NEW! Bonsai Tree **M**

Bonsai literally means "tree in a pot." Join horticulturist, Kerri Bailey as she reveals the ancient mysteries of bonsai care in this hands-on, informative beginner workshop. You will learn basic bonsai techniques to create your own hardy, outdoor bonsai tree. Workshop includes all you need: tree, pot, wire, soil, gravel and tool kit. *A \$40 supply fee is due to the instructor at the beginning of class. Class also includes care guide and eBook.*

Item S054 **PUY LSC 111** **Fee: \$39**
Saturday **12:30-2:30 p.m.**
Bailey **1 session: April 13**

NEW! Edible Gardens

Combine function with form by using edible plants in your landscape. Flowers, herbs and veggies can be both attractive and useful for cooking, baking and for beverages. Learn which plants you can grow that can be used for crafts, canning or cut down your grocery bill. *Demonstration plants for sale after class. Class includes a handout and eBook.*

Item S063 **PUY LSC 111** **Fee: \$29**
Saturday **10-11:30 a.m.**
Bailey **1 session: May 11**

NEW! Mosaics for your Yard and Garden **M**

Spring in the northwest is all about the outdoors – making use of it, beautifying it, and enjoying it! Learn or enhance your mosaic skills to create colorful and durable art for your special outdoor spaces: address plaques, garden signage, functional furniture, 4-season birdhouses, whimsical items for entertaining, and much more. Hands-on, individualized instruction while working on your own project, on your own level, at your own pace, with your own favorite materials (glass, tiles, pebbles, broken plates, etc.). *A \$24 materials fee is due to instructor at the first class. All materials, tools, and supplies are included!*

Item S067 **PUY AAH 236** **Fee: \$129**
Saturday **11 a.m. to 2 p.m.**
Alexander **5 sessions: April 27 to May 25**

Create a Hanging Container Garden **M**

Not everyone has a big yard or a lot of time for gardening, but anyone can care for plants in pots. Add pizzazz to an entry way, focal point or other landscape area with containers full of prolific plants for year-round or seasonal interest. Learn how to create and care for gorgeous, healthy plants in a hanging basket. *A \$20 materials fee for plants, container, soil and fertilizer (or bring your own) will be due to the instructor at the beginning of class. Includes an eBook and handout.*

Item S057 **PUY LSC 150** **Fee: \$29**
Saturday **12:30-2:30 p.m.**
Bailey **1 session: April 20**

Bee, Butterfly and Hummingbird Garden

Attracting bees, butterflies and hummingbirds is not just for old fashioned cottage gardeners! Learn how you can create a gorgeous, easy care garden with increased fruit and vegetable yields while attracting butterflies, hummingbirds, bees and other beneficial insects. *Demonstration plants for sale after class. Includes a handout and eBook.*

Item S058 **PUY LSC 111** Fee: \$29
Saturday Noon to 1:30 p.m.
Bailey 1 session: May 4

Make Your Own M Fragrance Blend

Essential oil blends are "nature's nectar" consisting of aromas that range from floral, citrus, woody, musk, herbal, spicy and sweet. They are fun and easy to prepare by combining a variety of scents together diluted in a carrier oil. This blend can be used "neat" directly on the skin as a fragrance. Learn how to blend oils by choosing which ones go well together for desired results. You will get to make two scents to take home. *A \$10 supply fee payable to the instructor is due at the beginning of class. Includes handout, recipes and eBook.*

Item S068 **PUY LSC 111** Fee: \$39
Saturday 12:30-2:30 p.m.
Bailey 1 session: June 1

NEW! Garden Secrets Revealed

In this beginning garden series, you will discover the secrets of your garden and how to care for it easily using effective natural methods that are safe for kids and pets. Join horticulturist Kerri Bailey as she shares 20+ years of experience as an organic gardener and nursery veteran. The first class focuses on ornamental plants and landscape design, Plant Types 101, zones and hardiness, selecting plants, year-round bloom, water features and landscape design principles. The second class is all about edibles – fruits, berries, veggies, warm vs. cool season, propagation and seed starting. The third class tackles plant care and garden techniques such as proper planting, watering, pruning, soils and mulches, fertilizers, pesticides, and weeding concepts. *Bring your yard and garden pictures, questions and problems, and we will tackle them together! Includes handouts and eBooks for each session.*

Item S055 **PUY LSC 111** Fee: \$99
Saturday 10 a.m. to noon
Bailey 3 sessions: April 13-27

NEW! Natural Yard Care

When we let nature work, life is easier. In this class, you will learn the difference between traditional vs. organic gardening methods and why it makes a difference. Creating compost, importance of mulch, fertilizers, beneficial microbes, aquaponics and companion planting methods will be discussed. Learn natural pest control methods, how beneficial insects can control pests and how to identify and treat plant diseases. Healthy soil = healthy plants. *Includes a handout and eBook.*

Item S064 **PUY LSC 111** Fee: \$29
Saturday 10-11:30 a.m.
Bailey 1 session: May 4

Succulent Zen Garden M

Succulents are attractive, easy to care for container plants. In this class you will learn how to make and take care of your own decorative succulent garden that can be hardy indoors all year as a living arrangement. *The class includes one container project, handout and eBook. There is a \$15 fee payable to the instructor at the beginning of class.*

Item S056 **PUY LSC 111** Fee: \$29
Saturday 12:30-2:30 p.m.
Bailey 1 session: April 27

Worm Bin Composting with Bin and Worms

This popular, fun workshop is back! Worm bin composting is a great way to reduce food scraps into usable compost to fortify your garden naturally. Composting returns nutrients to the soil and reduces the amount of waste you set out at curbside. Instructional materials, starter bin and 1 lb. of worms are included in fee. Begin your worm adventure today! Taught by Pierce County environmental educators. *Must register by April 19 so we can order bins and worms.*

Item S065 **PUY LSC 128** Fee: \$49
Saturday 10 a.m. to noon
Pierce County 1 session: April 27

No Frills Worm Bin Composting

Class includes handouts and instruction only. No worms or bin included. This is the perfect option for families who want to take the course together but only want one bin. *One family member must register for the full price.*

Item S066 **PUY LSC 128** Fee: \$15
Saturday 10 a.m. to noon
Pierce County 1 session: April 27



FITNESS

Spinning with Amber Garden

Spin is a current approach to establishing and promoting physical fitness for better health. Spin is a high energy stationary bike workout that enhances cardiovascular endurance and muscular strength. Participants select personal intensity levels during the workout through body position and bike tension. The class features a 60 minute cardio ride, including warm-up and cool-down, followed by stretching. It's a great option for all fitness levels.

Item S044 **PUY HEP 206** Fee: \$139
Monday and Wednesday 6-7 p.m.
Garden 16 sessions: April 15 to June 10

Item S045 **PUY HEP 206** Fee: \$139
Tuesday and Thursday 4:30-5:30 p.m.
Garden 16 sessions: April 16 to June 11

LANGUAGE

Beginning Conversational French

In this fun, interactive course, you'll learn to express yourself in simple conversations, learn some basic conjugations, build a working vocabulary, and if planning a trip to France, survive! This course is ideal for those with little to no knowledge of French who are planning a trip to France, or who simply want to learn to speak this beautiful language.

Item S070 **PUY AAH 133** Fee: \$99
Tuesday 6:30-8 p.m.
Kernc 6 sessions: April 9 to May 14



HEALTHY EATING

NEW! Plan, Prepare, Produce Healthy Food

Learn the 3 "P's" to stay on track, cook regularly, and always have something healthy and available to eat. You will learn how to PLAN meals, PREPARE shopping lists, PLAN AND PREPARE ahead, and PRODUCE healthy food for breakfast, lunch and dinner throughout the week. In addition, learn how to make the most of your Instant Pot, pressure cooker, slow cooker and/or oven. Plan simple, quick meals for busy weeknights. Prepare extras as you go. Produce healthy food for yourself and your family with ease.

Item S053 **PUY LSC 171** **Fee: \$29**
Saturday **10-11:30 a.m.**
Blakeney **1 session: April 13**

NEW! Healthy, Quick Meals

Come learn how to make quick and healthy meals for your busy weeknights or any other time. In this informative three hour demonstration workshop, the instructor will show you three quick, healthy and relatively simple meals you can make in 30-60 minutes. Learn techniques for quick and healthy preparation, sample the dishes and take home recipes to try yourself. Demonstrations will include stir fry, spinach and broccoli smoked salmon salad, Buddha bowls and a one dish complete meal. *Register early, limited space.*

Item S051 **PUY CDP** **Fee: \$39**
Saturday **Noon to 3 p.m.**
Blakeney **1 session: April 27**

Sugar Detox

Addicted to sugar and simple carbs? Do you suffer from dramatic, or not so dramatic, blood sugar spikes and crashes? Learn to detox your body of sugar and simple carbs and stop craving them for good. By eating a healthy, well-balanced, protein-rich, omnivorous diet for 21 days, we will teach our bodies not to crave sugar. We start with a preparation week to get you ready to detox; then 21 days of the actual detox; followed by a final meeting to learn how to reintroduce foods back into your diet (if you want to), and learn how to listen carefully to your body and know what it needs. Included is a step-by-step guide through the sugar detox, a specifically designed cookbook, meal plans/menus, shopping lists, and other useful information. *A \$15 supply fee is due to the instructor for the cost of the guide at the beginning of class.*

Item S048 **FS OLY 205** **Fee: \$69**
Wednesday **7-8 p.m.**
Blakeney **5 sessions: April 10 to May 8**

Item S049 **PUY LSC 171** **Fee: \$69**
Saturday **10-11 a.m.**
Blakeney **5 sessions: April 27 to May 25**

Eating for Energy

Tired of being tired all the time? Exhausted, fatigued, run down? Discover the six culprits that are keeping you exhausted and what you can do to turn things around. Learn the fastest ways to increase your energy for good. Learn about the foods and drinks that are the top energy stealing offenders. Leave class with a simple strategy you can implement immediately to avoid the mid-afternoon slump. Take home five recipes to experiment with five power-house energy boosting foods to integrate into your diet. Join us for an energy boosting class that has the potential to change your life for good.

Item S050 **PUY LSC 171** **Fee: \$29**
Saturday **10-11:30 a.m.**
Blakeney **1 session: June 1**

NEW! MORE Healthy, Quick Meals

Come learn how to make more quick and healthy meals for your busy weeknights or any other time. In this informative three hour demonstration workshop, You'll learn 3 quick, healthy and relatively simple meals you can make in 30-60 minutes. Learn techniques for quick and healthy preparation, sample the dishes and take home recipes to try yourself. If you took the first class, this class has all new recipes. Demonstrations will include lettuce tacos with black bean side, penne with red peppers and turkey sausage, and simple salmon with rice and steamed vegetables. *Register early, limited space.*

Item S052 **PUY CDP** **Fee: \$39**
Saturday **Noon to 3 p.m.**
Blakeney **1 session: May 11**

Cooking with Herbs – Summer BBQ Blend **M**

Put a little spice in your life, or at least in your food! In this workshop we will discuss herbs and spices that can enhance the flavor of your favorite summer dishes, as well as how to make your own seasoning blends, BBQ rubs, dressings and salads. Workshop also includes a handout, recipes and eBook. *A \$5 supply fee is due, payable to the instructor at the beginning of class for the cost of making your own herb and spice blend.*

Item S046 **PUY LSC 111** **Fee: \$29**
Saturday **12:30-2:30 p.m.**
Bailey **1 session: May 25**

Herbal Supplements & Smoothie Mixes **M**

Most people may think of herbs as medicine, but herbs are also food! They are "nature's whole food vitamins" better than any synthetic, generic vitamin found on drugstore shelves. Powdered herbs can be put into capsules or used as additives in your smoothie. You will also learn how to make your own herbal formula using ground herbs to target specific health issues and increase your daily nutritional intake. You will also be able to make your own supplement. *Includes a handout, herb & spice cooking chart, recipes and eBook. A \$5 supply fee is due, payable to the instructor at the beginning of class for the cost of making your own blend.*

Item S047 **PUY LSC 111** **Fee: \$29**
Saturday **10 a.m. to noon**
Bailey **1 session: May 25**



OUTDOOR PURSUITS

Exploring Archery Fundamentals

This super fun course is designed for the first-time archer and those with beginning archery skills. You'll learn shooting recurve and compound bow basics. We'll start with the shot process: stance, nock, hook and grip, posture/alignment, raise bow, draw, anchor and release. Each shot process skill introduced will be followed up with specific drills. *A \$25 equipment fee is due and payable to Skookum Archers at the beginning of the first class. You'll also receive a SKOOKUM t-shirt! Please call 253-840-8452 to provide your t-shirt size.*

Item S088 SKO **Fee: \$99**
Wednesday **6:30-8:30 p.m.**
Price **5 sessions: May 1-29**

Skookum Archers (SKO)
 11209 Shaw Rd E, Puyallup, WA 98374

Golfing Basics at Chambers Bay – Ladies Only

Ladies, now it's your turn to learn golf basics in a comfortable environment with other gals. Ideal for the beginning or returning player. You'll learn all the basics – navigating the clubhouse and course, social benefits, club selection and grip, golf lingo, keeping score and more. All equipment will be provided for your use. Consider bringing your girlfriends for a few fun evenings in the spring!

Item S086 CHB **Fee: \$109**
Saturday **4-5 p.m.**
Young **5 sessions: April 20 to May 18**

Chambers Bay Golf Course (CHB)
 6320 Grandview Dr W
 University Place, WA 98467

Golfing Basics at Chambers Bay 🔥

This fun course is back, but register early as it filled fast last spring! Get ready to learn to play golf where the pros play: Chambers Bay, home of the U.S. Open! Instructors will teach you everything you need to know to play golf in just a few lessons. We'll cover the basics like how to navigate the clubhouse and practice areas, social benefits, club selection and grip, swing technique, golf lingo like fairway, bunker, par, eagle, tee markers, rules, keeping score and so much more! All equipment will be provided. Consider getting a friend or two to register with you for a fun time! Open to men and women.

Item S085 CHB **Fee: \$109**
Saturday **3-4 p.m.**
Young **5 sessions: April 20 to May 18**

Item S087 CHB **Fee: \$109**
Thursday **6-7 p.m.**
Young **5 sessions: April 18 to May 16**

PERSONAL FINANCE

Social Security: Your Questions Answered

In this educational workshop for anyone nearing retirement, or ages 55 and up who have uncertainties, we'll address common questions such as: how does Social Security fit into my retirement income plan, when should I start taking benefits and what about taxes? Plenty of time for questions and answers too!

Item S090 PUY AAH 130 **Fee: \$19**
Wednesday **6-7:30 p.m.**
Nelson **1 session: May 15**

Item S091 PUY AAH 130 **Fee: \$19**
Tuesday **6-7:30 p.m.**
Koleszar **1 session: June 18**

Standing Guard: Protect What You've Worked for Financially

Retirees, or those soon-to-be retired: learn strategies to help you guard your most valuable assets and protect against risks. We'll teach you how to create a foundation to help protect against unexpected events, protect your income during retirement and address rising health care and long-term care costs.

Item S092 PUY AAH 130 **Fee: \$19**
Wednesday **6-7:30 p.m.**
Nelson **1 session: June 12**



NEW! Ready or Not? Prepare for the Unexpected Financially

Come learn tips on how to develop a proactive strategy for protecting and preparing for the unexpected. While not all unexpected events are negative, generally, the big ones will affect your financial future. A little planning (and saving) now will make these emergencies and unexpected events much easier to handle when they come your way.

Item S089 PUY AAH 130 **Fee: \$19**
Wednesday **6-7:30 p.m.**
Nelson **1 session: April 10**

NEW! Retirement: Making your Money Last

This class is designed to help you prepare to live the retirement life you have envisioned. You will learn investment strategies to help build a strategy to last throughout your retirement years. In addition, you'll explore how to address key concerns such as inflation, health care expenses and market volatility as well as ways to prepare in advance for things that may not go as expected.

Item S093 PUY AAH 130 **Fee: \$19**
Wednesday **6-7:30 p.m.**
Koleszar **1 session: April 24**

Item S094 PUY AAH 130 **Fee: \$19**
Wednesday **6-7:30 p.m.**
Koleszar **1 session: May 29**



More online finance and investing courses on [page 26](#) and [31](#)



This class is HOT! Register early!



Make and take

JOIN THE PIERCE COLLEGE MUSIC PROGRAM

Concert Choir

Join this non-auditioned vocal performance group geared toward the experienced singer. You will have the opportunity to rehearse and perform choral literature as a community member joining with the college concert choir. *No class May 27.*

Item S073 **FS OLY 283** **Fee: \$49**
Monday-Thursday **1-1:50 p.m.**
Jardine-Tobin **41 sessions: April 8 to June 17**

Item S072 **PUY AAH 102** **Fee: \$49**
Monday-Thursday **Noon to 12:50 p.m.**
Owen **41 sessions: April 8 to June 17**

Chamber Choir

This auditioned vocal performance group is geared toward providing more experienced singers who read music with an opportunity to rehearse and perform choral literature as a community member joining with the college chamber choir. Learn vocal pedagogy, perform choral repertory, work in an ensemble and sing in a variety of languages using proper diction and enunciation. Audition first week of course before you register. *No class May 27.*

Item S074 **PUY AAH 102** **Fee: \$49**
Monday-Thursday **1-1:50 p.m.**
Owen **41 sessions: April 8 to June 17**

College Band

Join a large performance group open to everyone with experience reading and performing instrumental literature. You will learn to demonstrate your ability in timbre, rhythmic accuracy, intonation, expression, style and balance.

Item S075 **PUY AAH 102** **Fee: \$49**
Tuesday **7:30-9:30 p.m.**
Staff **11 sessions: April 9 to June 18**

College Orchestra

This large performance group is open to everyone with experience reading and performing orchestra literature. You will learn to demonstrate your ability in timbre, rhythmic accuracy, intonation, expression, style and balance. Prior to registering, please contact anaze@pierce.ctc.edu to discuss your instrument and experience level. *No class May 27.*

Item S071 **PUY AAH 102** **Fee: \$49**
Monday **7:30-9:30 p.m.**
Naze **10 sessions: April 8 to June 17**



MUSIC & VOICE

Yes! You Can Play the Ukulele!

This entry-level course is the perfect fit for those brand new to the ukulele (uke). All the basics will be covered, from how to tune and hold the uke, how to properly fret notes and chords, useful strumming patterns, and more. By week three, you'll be playing familiar songs! *Students must bring a soprano, concert or tenor ukulele (and a pick) to all class meetings. No baritone ukes. A \$6 fee is due to the instructor for the cost of the instructional packet.*

Item S082 **PUY AAH 131** **Fee: \$119**
Tuesday **6-7:30 p.m.**
Saxon **6 sessions: April 9 to May 14**

Pop Goes the Ukulele

Learn to play pop and rock songs by ukulele (uke)-playing (or uke-compatible) popular artists such as Meghan Trainor, Train, Jimmy Buffett, Jason Mraz and The Beatles while increasing your chord knowledge and uke skills. *Students must bring a soprano, concert or tenor ukulele (and a pick) to all class meetings. No baritone ukes. No loaner ukes available. Prerequisite: Have taken Yes! You Can Play the Ukulele or ability to play at least six chords. A \$6 fee is due to the instructor for the cost of the instructional packet.*

Item S083 **PUY AAH 131** **Fee: \$109**
Tuesday **6-7:30 p.m.**
Saxon **5 sessions: May 21 to June 18**

NEW! Ukulele Campfire Songs

If you love singing timeless songs with friends and family under the stars and love the sound of a ukulele, then this is the course for you. You'll learn the ukulele chords and the strums to a number of well-known fireside favorites plus a couple of pop songs, too. *Students must bring a soprano, concert or tenor ukulele (and a pick) to all class meetings. No baritone ukes. No loaner ukes available. Prerequisite: ability to play a few basic chords. A \$6 fee is due to the instructor for the cost of the instructional packet.*

Item S084 **PUY AAH 131** **Fee: \$109**
Tuesday **7:30-9 p.m.**
Saxon **5 sessions: May 21 to June 18**

Piano, Beginning

Learn to play the piano! You will gain a basic understanding of music notation and the structure behind the tunes you play. No previous keyboarding or music reading skills are needed to get started. *Bring a copy of "Alfred's Basic Adult Piano Course Lesson Book – Level One" to the first class session. The book can be purchased online or at local music stores.*

Item S078 **PUY AAH 205** **Fee: \$129**
Tuesday **6:30-8:30 p.m.**
Davidson **5 sessions: April 9 to May 7**

Piano, Intermediate

This course builds upon the skills you have gained in the beginning course. You will expand upon your keyboarding and music reading abilities. *Bring your copy of "Alfred's Basic Adult Piano Course Lesson Book – Level One" to class.*

Item S079 **PUY AAH 205** **Fee: \$129**
Tuesday **6:30-8:30 p.m.**
Davidson **5 sessions: May 14 to June 11**

Introduction to Voiceovers: Getting Started in Voice Acting

"Wow, you have a great voice!" Have you heard that more times than you can count? Or maybe you listen to your favorite audiobooks, commercials, or cartoon characters and think, "I could do that!" If so, you could have what it takes to begin working as a professional voiceover artist. In this one-time, two-hour introductory course, you'll also learn about the different types of voiceovers and the tools you'll need to find success. You owe it to yourself to finally explore the possibilities of this fun and rewarding job.

Item S076 **FS OLY 205** **Fee: \$69**
Thursday **6-8 p.m.**
Lisauskas **1 session: April 18**

Item S077 **PUY AAH 133** **Fee: \$69**
Thursday **6-8 p.m.**
Lisauskas **1 session: May 30**

READY TO REGISTER?

Go online at www.PierceCE.com
or call 253-864-3330

NEW! Intro to Acoustic Guitar Level I

This course is a perfect fit for those new to acoustic guitar as it will provide core knowledge and practice structure. After learning proper guitar and hand placement, you will be able to play clear individual notes and strum basic chords on the guitar. With that knowledge you will then learn simple arrangements of two or more well-known songs that with practice you will be able to play on your own. You do not need to read music to take this course. *You must bring an acoustic guitar and pick to class each week. No loaner instruments are available from the college or instructor. A \$6 fee is due to the instructor at the beginning of class for the cost of instructional packet.*

Item S080 PUY AAH 131 Fee: \$119
Wednesday 6-7:30 p.m.
Saxon 6 sessions: April 10 to May 15

NEW! Intro to Acoustic Guitar Level II

In this sequel to Intro to Acoustic Guitar, you'll expand your song repertoire with well-known pop, rock, blues and country songs. You'll learn useful strumming patterns, develop your chord palette and get some useful insights about fingerpicking. Between in-class instruction and ample practice time, there's a good chance you'll emerge as an early intermediate level player by the end of the course. *Prerequisite: Intro to Acoustic Guitar Level I or ability to play some basic guitar chords. You must bring an acoustic guitar and pick to class each week. No loaner instruments are available from the college or instructor. A \$6 fee is due to the instructor at the beginning of class for the cost of instructional packet.*

Item S081
PUY AAH 131
Fee: \$109
Wednesday
7:30-9 p.m.
Saxon
5 sessions:
May 22 to June 19



THE BEST OF ENGLAND, SCOTLAND AND IRELAND WITH PIERCE COLLEGE

Aug. 8-19, 2019 | Starting at \$4,413

Embark on a guided tour of England, Scotland and Ireland, which will take you from cosmopolitan London to the medieval city of Edinburgh. Then, pass through the Lake District and Wales as you travel between Scotland and Ireland. After arriving in the Emerald Isle, grab a pint (or a few) with Dubliners and make your way along the scenic Ring of Kerry and Cliffs of Moher, taking in stunning sea views as you go.

Package includes

- Round-trip flights from Seattle
- 10 nights in handpicked hotels
- 10 breakfasts
- 4 dinners with beer or wine
- 6 guided sightseeing tours
- Expert tour director and local guides
- Private deluxe motor coach

Included highlights

Trafalgar Square, Big Ben, Buckingham Palace, Edinburgh Castle, local pub culture, St. Patrick's Cathedral, Rock of Cashel, Blarney Castle, Ring of Kerry, Cliffs of Moher

Tour pace

On this guided tour, you'll walk for about 1.5 hours daily across mostly flat terrain, including paved roads and cobblestone streets, with few hills or stairs.

View the full itinerary at

<https://www.grouptoursite.com/tours/esewithpiercecollege>

Questions? Call Tracy Clark at 253-840-8451.

This class is HOT! Register early! **M** Make and take

POSSIBILITIES. REALIZED.

23

PERSONAL ENRICHMENT



Looking to-
IMPROVE your skills?
ENHANCE your career?
PREPARE for employment?
All online!

Pierce College offers three convenient, 100% online learning pathways. Check out our wide selection of noncredit courses for the best fit for you.

PROFESSIONAL DEVELOPMENT

NONCREDIT ONLINE PROFESSIONAL & PERSONAL DEVELOPMENT

Improve your skills

These instructor-led online courses are informative, fun, convenient and highly interactive. We create warm, supportive communities for our learners. New course sessions begin monthly.

BENEFITS:

- 24-hour access
- Online discussion areas
- 6-week format
- Expert instructors
- New sessions start monthly
- 400 courses to choose from
- Mobile device friendly

HOW LONG?



6-week courses

COST



Most individual courses only \$119

BENEFITS



Improved skills



Learn more on **page 26** or visit

Professional.PierceCE.com



TEACHER TRAINING

Improve your classroom effectiveness. Complete your clock hours online!



Learn more on **page 28** or visit

Teachers.PierceCE.com

NONCREDIT ONLINE EDUCATORS & BUSINESS CERTIFICATES

Enhance your career COURSES FOR EDUCATORS

In partnership with Virtual Education Software, inc. (VESi), Pierce College offers convenient, relevant and affordable online education courses for 30 or 45 clock hours.

BENEFITS:

- Start anytime that is convenient for your schedule
- Tablet compatible
- Clock hours included

HOW LONG?



Complete your courses at your pace within one year of your registration date

COST



Ranges from \$244 to \$294

BENEFITS



30-45 clock hours

Learn more on **page 30** or visit
Educators.PierceCE.com

BUSINESS TRAINING

Whether you want to improve your skills with a quick one-month course or earn a certificate by taking a series of courses, these flexible online business courses are right for you.

BENEFITS:

- One-month courses
- Continuing Education Units (CEUs)* are included in the price
- Courses in most certificates may be taken in any order
- Employer payments and company training vouchers accepted

HOW LONG?



Each course is one month long. Complete a series of courses for a certificate.

COST



Ranges from \$195 to \$595. Take a certificate series and save!

BENEFITS



Improved skills plus resume-building certificates.

Learn more on **page 31** or visit
Business.PierceCE.com

*CEUs provide a permanent record of the completion of significant noncredit educational courses.

NONCREDIT ONLINE CAREER TRAINING

Prepare for employment

Prepare for employment in some of today's hottest careers with a comprehensive, affordable and self-paced online career training program. Begin these programs at any time and learn at your own pace.

BENEFITS:

- Start any time and work at a pace that suits your individual style
- Complete in 6-12 months
- Most training programs include industry approved certification exam vouchers
- In-depth study, all learning materials provided
- Approved for military vocational rehabilitation Chapter 31
- Approved for MyCAA military spouse funding (\$4,000 per person)
- WorkSource/WIOA funding available for selected programs
- Financial assistance and payment plans available to those who qualify

HOW LONG?



6-12 months

COST



Varies depending on course length. See website or course listing for pricing.

BENEFITS



Career building certification

Learn more on **page 32** or visit
Career.PierceCE.com

Please note: Once the program curriculum is accessed online or through submission of a material shipment confirmation, refunds cannot be processed.

NONCREDIT ONLINE

PROFESSIONAL & PERSONAL DEVELOPMENT



ACCOUNTING

- ⊕ Accounting Fundamentals I
- ⊕ Accounting Fundamentals II
- Crystal Reports
- Performing Payroll in QuickBooks
- Purchasing Fundamentals
- ⊕ QuickBooks

BUSINESS, OFFICE AND SALES

- ⊕ Administrative Assistant Applications
- ⊕ Administrative Assistant Fundamentals
- Effective Selling
- NEW!** High Performance Organization
- High Speed Project Management
- Introduction to Business Analysis
- ⊕ Keyboarding
- Mastery of Business Fundamentals
- Professional Sales Skills
- Sales Training
- NEW!** Talent and Performance Management
- Total Quality Fundamentals
- ⊕ Using Social Media in Business

BUSINESS WRITING

- Business and Marketing Writing
- Effective Business Writing
- ⊕ Fundamentals of Technical Writing
- How to Make Money from Your Writing
- Introduction to Internet Writing Markets
- Research Methods for Writers
- Resume Writing Workshop
- The Craft of Magazine Writing
- ⊕ The Keys to Effective Editing
- Write Effective Web Content
- Writing and Editing

- ⊕ Self-paced courses

COLLEGE READINESS

- ⊕ Introduction to Algebra
- Introduction to Biology
- Introduction to Chemistry
- ⊕ Introduction to Statistics
- ⊕ Math Refresher

COMMUNICATIONS

- ⊕ Achieving Success with Difficult People
- ⊕ Individual Excellence
- ⊕ Interpersonal Communication
- ⊕ Keys to Effective Communication
- Mastering Public Speaking
- Presentation Skills
- Skills for Making Great Decisions

COMPUTER PROGRAMMING

- ⊕ CSS3 and HTML5
- ⊕ C# Programming
- C++ Programming
- ⊕ Java Programming
- JavaScript
- PHP and SQL
- ⊕ Python Programming
- Visual Basic

ENTREPRENEURSHIP AND SMALL BUSINESS

- Learn to Buy and Sell on eBay
- Marketing Your Business on the Internet
- Publish and Sell Your eBooks
- Small Business Marketing on a Shoestring
- Start and Operate Your Own Home-Based Business
- ⊕ Start Your Own Small Business
- Starting a Consulting Practice

FINANCE AND INVESTING

- Introduction to Stock Options
- Keys to Successful Money Management
- ⊕ Personal Finance
- ⊕ Real Estate Investing
- Stock Trading
- ⊕ Stocks, Bonds and Investing: Oh, My!
- The Analysis and Valuation of Stocks
- Where Does All My Money Go?

GRANT WRITING AND NONPROFIT

- Get Grants!
- Grant Proposal Writing
- ⊕ Grant Writing A to Z I
- ⊕ Grant Writing A to Z II
- Marketing Your Nonprofit
- Nonprofit Fundraising
- Nonprofit Management
- Starting a Nonprofit

GRAPHIC AND WEB DESIGN

- Adobe Acrobat
- ⊕ Adobe Illustrator
- ⊕ Adobe InDesign
- Adobe Lightroom
- ⊕ Adobe Photoshop
- ⊕ Creating Web Pages
- ⊕ Creating WordPress Websites
- Designing Effective Websites
- Dreamweaver
- Web Design

HEALING & HOLISTIC HEALTH

- NEW!** Certificate in Brain Health
- NEW!** Certificate in End of Life Care
- Certificate in Energy Medicine

Six-week online courses start March 13, April 17 and May 15

⊕ **NEW!** Certificate in Food, Nutrition and Health

Certificate in Global Healing Systems

Certificate in Healing Environments for Body, Mind & Spirit

Certificate in Healthy Aging

Certificate in Holistic & Integrative Health

Certificate in Meditation

Certificate in Mindfulness

⊕ **NEW!** Certificate in Music Therapy and Sound Healing

Certificate in Spirituality, Health & Healing

⊕ Introduction to Natural Health & Healing

HEALTH AND MEDICAL

⊕ Certificate in Gerontology

Certificate in Infectious Disease Control

Certificate in Integrative Mental Health

Certificate in Legal & Ethical Issues in Health Care

Certificate in Pain Assessment & Management

Certificate in Perinatal Issues

⊕ Handling Medical Emergencies

HIPAA Compliance

⊕ Human Anatomy & Physiology

Human Anatomy & Physiology II

⊕ Medical Math

⊕ Medical Terminology

LANGUAGE

⊕ Conversational French, Beginning

Conversational Japanese

⊕ Discover Sign Language

Instant Italian

⊕ Speed Spanish

⊕ Speed Spanish II

Speed Spanish III

Spanish for Law Enforcement

⊕ Spanish for Medical Professionals

Spanish for Medical Professionals II

MANAGEMENT AND LAW

⊕ Building Teams That Work

⊕ Creating a Successful Business Plan

Employment Law Fundamentals

⊕ Leadership

Managing Customer Service

⊕ Supervision and Management

⊕ Understanding the Human Resources Function

Workers' Compensation

Workplace Law Essentials

MICROSOFT AND PERSONAL COMPUTERS

⊕ Computer Skills for the Workplace

⊕ Microsoft Access

⊕ Microsoft Excel

Microsoft Outlook

Microsoft PowerPoint

Microsoft Project

Microsoft Publisher

⊕ Microsoft Windows

⊕ Microsoft Word

⊕ PC Security

PC Troubleshooting

Understanding the Cloud

PERSONAL IMPROVEMENT AND SPECIAL INTEREST

Certificate in Stress Management

Helping Elderly Parents

Happy and Healthy Pregnancy

Healthy Relationships

Lose Weight and Keep It Off

PHOTOGRAPHY

⊕ Discover Digital Photography

Introduction to Lightroom

⊕ Mastering Your Digital SLR Camera

Photographing Nature with Your Digital Camera

Photographing People with Your Digital Camera

⊕ Photoshop Creative Cloud

Photoshop for the Digital Photographer

⊕ Secrets of Better Photography

Travel Photography for the Digital Photographer

TEST PREP

⊕ GED Prep

GMAT Prep

⊕ GRE Prep I and II

LSAT Prep

⊕ Praxis Prep

⊕ SAT/ACT Prep

IT TEST PREP

⊕ CompTIA A+ Certification Prep (Basic)

⊕ CompTIA A+ Certification Prep (Intermediate)

CompTIA A+ Certification Prep (Advanced)

CompTIA Network+ Certification Prep

LPI Linux Essentials Exam Prep

**Most
six-week
courses
only
\$119!**

In a hurry?

Check out our new self-paced courses and finish faster!

- All lessons released when you start the course
- Complete material as soon as you like
- If you need more time you have three months of course access
- Student discussion boards available
- Perfect for students who do not need instructor feedback



Look for this icon to find our self-paced courses.

PROFESSIONAL DEVELOPMENT

START ANY MONTH

For detailed course descriptions, pricing and to register, go to:

Professional.PierceCE.com

⊕ Self-paced courses

NONCREDIT ONLINE

PROFESSIONAL DEVELOPMENT

Six-week
courses
**only
\$139!**

**TEACHER
TRAINING**

*Improve your
classroom effectiveness*

**Complete your clock hours online.
24 clock hours included.***

***K-12 CLOCK HOURS:** The Pierce College Community and Continuing Education department is an approved OSPI (Office of the Superintendent of Public Instruction) Clock Hour provider.

⊕ Self-paced courses

⊕ A to Z Grant Writing I

⊕ A to Z Grant Writing II

Advanced Grant Proposal
Writing

Common Core Standards in
English K-5

Content Literacy:
Grades 6-12

⊕ Creating Classroom Centers

Creating a Classroom Website

Creating the Inclusive
Classroom: Strategies for
Success

The Creative Classroom

Differentiating K-12
Assessments

⊕ Empowering Students with
Disabilities



Six-week online courses start March 13, April 17 and May 15



Enhancing Language Development in Childhood

⌚ Get Assertive!

Get Grants!

Grammar for ESL

Guided Reading and Writing: Strategies for Maximum Student Achievement

Homeschool with Success

⌚ Integrating Technology in the Classroom (STEM Clock Hours)

⌚ Leadership

Microsoft Excel in the Classroom

Microsoft PowerPoint in the Classroom

Microsoft Word in the Classroom

⌚ Praxis Core Preparation

⌚ Singapore Math: Number Sense and Computational Strategies

⌚ Singapore Math Strategies: Model Drawing for Grades 1-6

Singapore Math Strategies: Advanced Model Drawing for Grades 6-9

⌚ Solving Classroom Discipline Problems

Solving Classroom Discipline Problems II

⌚ Spanish in the Classroom

Survival Kit for New Teachers

⌚ Teaching Adult Learners

Teaching High School

Teaching Math: Grades 4-6

⌚ Teaching Preschool: A Year of Inspiring Lessons

Teaching Science: Grades 4-6

⌚ Teaching Smarter with SMART Boards

⌚ Teaching Writing: Grades K-3

Teaching Writing: Grades 4-6

⌚ Understanding Adolescents

Using the Internet in the Classroom

⌚ Writing Effective Grant Proposals

Writing for ESL

In a hurry?

Check out our new self-paced courses and finish faster!

- All lessons released when you start the course
- Complete material as soon as you like
- If you need more time you have three months of course access
- Student discussion boards available
- Perfect for students who do not need instructor feedback



Look for this icon to find our self-paced courses.



For detailed course descriptions, pricing and to register, go to:

 **Teachers.PierceCE.com**

NONCREDIT ONLINE

COURSES FOR EDUCATORS

30 Clock Hours**Fee: \$244**

| | |
|-----------|---|
| Item R301 | Advanced Classroom Management |
| Item R302 | Attention Deficit/Hyperactivity Disorder |
| Item R303 | Autism & Asperger's Disorder |
| Item R305 | Child Abuse |
| Item R306 | Drugs & Alcohol in Schools |
| Item R307 | Early Childhood: Family-Centered Services |
| Item R311 | Educational Assessment |

| | |
|-----------|--|
| Item R312 | Harassment, Bullying & Cyber-Intimidation in Schools |
| Item R313 | Inclusion |
| Item R314 | Infant & Toddler Mental Health |
| Item R316 | Reading & Writing in Content Area |
| Item R317 | Reading Fundamentals #1 |
| Item R318 | Reading Fundamentals #2 |
| Item R330 | Six Traits of Writing Model |
| Item R320 | Talented & Gifted |
| Item R322 | Teaching Diversity |
| Item R321 | Teaching Elementary Math Conceptually |
| Item R323 | Traumatized Child |
| Item R327 | Violence in Schools |

45 Clock Hours**Fee: \$294**

| | |
|-----------|---|
| Item R304 | Behavior is Language |
| Item R308 | Early Childhood: Observation & Assessment |
| Item R309 | Early Childhood: Program Planning |
| Item R310 | Early Childhood: Typical & Atypical Development |
| Item R315 | Learning Disabilities |
| Item R319 | Reading Fundamentals #3 |
| Item R329 | Response to Intervention |
| Item R331 | Teaching Secondary Math Conceptually |
| Item R324 | Try DI! |
| Item R326 | Understanding & Implementing Common Core Standards |
| Item R325 | Understanding Aggression |
| Item R328 | Why DI? - An Introduction to Differentiated Instruction |

PROFESSIONAL DEVELOPMENT

Register today!

- 1 Visit **Educators.PierceCE.com** to register and pay.
- 2 Email your name, phone number and course title to **ce-questions@pierce.ctc.edu** to receive your log in information.*

**There are no refunds given once you have been issued your username and password information.*

Please note:

Pierce College recommends that you check with your school district and/or state licensing agency to verify these course offerings will meet your district and/or state requirements for salary advancement and/or state certificate re-licensure.

For detailed course descriptions, pricing and to register, go to:



Educators.PierceCE.com

NONCREDIT ONLINE

BUSINESS CERTIFICATES



CHECK OUT OUR **HOT** TOP 10 CERTIFICATES

- 1 Accounting & Finance for Non-Financial Managers Certificate**
Q257 \$495 48 hours
- 2 Data Analysis Certificate**
Q205 \$495 48 hours
- 3 Designing Webinars Certificate**
Q206 \$345 32 hours
- 4 Leading & Managing Virtual Teams Certificate**
Q260 \$495 48 hours
- 5 Managing Social Change Certificate**
Q261 \$495 48 hours
- 6 Product Prototyping on a Budget Certificate**
Q262 \$395 32 hours
- 7 Productivity & Time Management Certificate**
Q258 \$595 48 hours
- 8 Social Media for Business Certificate**
Q223 \$495 48 hours
- 9 Supervisory & Leadership Certificate**
Q224 \$395 32 hours
- 10 Workplace Communication Certificate**
Q213 \$595 56 hours

BUILD YOUR SKILLS WITH THESE 10 POPULAR COURSES:

| | | | |
|------|-----------------------------|-------|----------|
| Q846 | Business Writing | \$195 | 16 hours |
| Q869 | Collaborative Management | \$295 | 24 hours |
| Q801 | Cyber Security for Managers | \$195 | 16 hours |
| Q809 | Google Analytics | \$195 | 16 hours |
| Q868 | Identity Theft | \$195 | 16 hours |
| Q071 | Leadership Principles | \$145 | 16 hours |
| Q021 | Mobile Marketing | \$195 | 16 hours |
| Q829 | Onboarding New Employees | \$195 | 16 hours |
| Q817 | Self-Publishing eBooks | \$195 | 16 hours |
| Q859 | WordPress Fundamentals | \$195 | 16 hours |

...and many more!

DID YOU KNOW?

- **Employer payments and company vouchers** are accepted for these courses. Call 253-840-8453 for details.
- Courses within most certificates may be **taken in any order.**
- Continuing Education Units (**CEUs**) are **included** in the price.



For detailed course descriptions, pricing and to register, go to:

Business.PierceCE.com

NONCREDIT ONLINE

CAREER TRAINING

Health Care Training



MEDICAL BILLING AND CODING

CPC Certified Medical Administrative Assistant with Medical Billing and Coding

500 hours \$3,195 (Exam vouchers included)

Designed for students with little or no experience in the health care field, this program covers the basics of medical office management, computer skills, medical terminology and medical billing and coding. Upon completion of the program, you will be prepared to sit for the CPC exam offered by the AAPC and the CMAA exam offered by NHA.

CPC Medical Billing and Coding

340 hours \$2,695 (Exam voucher included)

This program is for students new to a medical career. Gain a broad understanding of relevant legal, ethical and regulatory concepts. Build a foundation of medical vocabulary to better understand patient medical records and physician notes. Learn to function as an important member of the health care team by providing key skills such as abstracting from medical records, assigning codes to diagnoses and developing insurance claims using the ICD-10-CM, ICD-10-PCS, CPT and HCPCS Level II code books. Upon completion of the program, you will be prepared to sit for the CPC exam offered by the AAPC.

Advanced Coding for the Physician's Office

100 hours \$1,595

This nationally recognized program covers diagnostic and procedural coding using CPT™, ICD-10-CM and HCPCS Level II coding manuals. This is an advanced program, designed for current coders working in a physician's office, clinic or group practice. Preparation for the CCS-P and CPC exams is included.

Certified Outpatient Coder

200 hours \$1,995

Learn fundamental medical coding skills for outpatient hospital facilities or ambulatory surgery centers; and prepare to take AAPC's COC exam. Gain advanced skills to review medical records and determine the appropriate CPT®, HCPCS Level II and ICD-10-CM code sets. Learn how to apply coding conventions and coding guidelines to maintain compliance and capture appropriate revenue.

Advanced Hospital Coding and CCS Prep

100 hours \$1,895 (Exam voucher included)

This program prepares you to take the American Health Information Management Association's official certification exam to become a Certified Coding Specialist (CCS). The program covers ICD-10-CM/PCS medical coding of diagnoses and procedures. Meet the challenge of today's changing standards while learning and improving your coding skills.

Certified Risk Adjustment Coder

160 hours \$1,495 (Exam voucher included)

Learn different models of risk adjustment (HCC, CDPS, HHS-ACA and Hybrid) and understand predictive modeling and its impact. You will also learn how to explain risk adjustment as it relates to financial matters, apply official coding guidelines, identify elements of medical records, document deficiencies for diagnosis coding and how to code in ICD-10-CM.

DID YOU KNOW?

- **Employer payments and company vouchers** are accepted for these courses. Call 253-840-8453 for more information.
- Approved for **MyCAA military spouse funding** (\$4,000 per person)
- Under the **Fee Installment Plan**, you can make up to three interest-free payments. Contact cashiering at cashiering@pierce.ctc.edu or 253-964-6700.
- Some courses qualify for WorkSource/WIOA funding. Call 253-840-8453 for assistance.

Administrative Dental Assistant

150 hours \$1,795

Build essential skills for managing the business aspects of a dental practice. Learn about dental terminology and anatomy, medical records management, accounts receivable, reimbursement, insurance plans, patient billing, patient scheduling and procedural diagnostic coding.

Certified Electronic Health Records Specialist + Medical Terminology

194 hours \$2,295 (Exam voucher included)

Learn the ins and outs of electronic health records (EHR) systems, along with the many benefits they offer medical practices. Receive hands-on practice using real EHR software as you prepare to take the NHA CEHRS certification exam. You'll also study medical terminology, disorders and medical procedures common to each body system, including musculoskeletal, cardiovascular, respiratory, digestive, nervous, endocrine, integumentary, genitourinary, lymphatic and immune.

Certified Health Unit Coordinator

120 hours \$1,495

Learn information management, communication, medical terminology, critical thinking, ethics, confidentiality laws, transcription, and safety; and how to handle patient records, admissions, transfers and discharges. Learn how cultural diversity relates to promoting a healthy environment between staff and patients. Upon completion, you will be prepared to sit for the NAHUC certification exam and be prepared to work in hospitals, long term care, medical offices and other health care settings.

Certified Medical Administrative Assistant

160 hours \$1,495 (Exam voucher included)

Prepare to be a versatile and valuable member of a health care team who can handle a broad range of duties, including patient registration, scheduling, medical records, accounts receivable, data entry, medical claims, insurance, electronic records and correspondence. Upon completion, you will be prepared for the CMAA exam offered by the NHA.

Certified Professional Medical Auditor

80 hours \$1,695 (Exam voucher included)

This program focuses on defining fraud and abuse of regulations. Study the impact of the Office of Inspector General (OIG), Work Plan and Corporate Integrity Agreements. Learn the elements of compliance plans, potential compliance risk areas and the HIPAA privacy rule. Identify medical record documentation standards, record retention standards and documentation errors for evaluation, specifically for anesthesia, surgery, radiology, pathology, laboratory and medicine services. You'll learn to define steps of the audit process, identify statistical sampling types and factors, conduct audits and explain audit findings with the medical provider.

Medical Interpreter (Spanish/English)

200 hours \$2,395

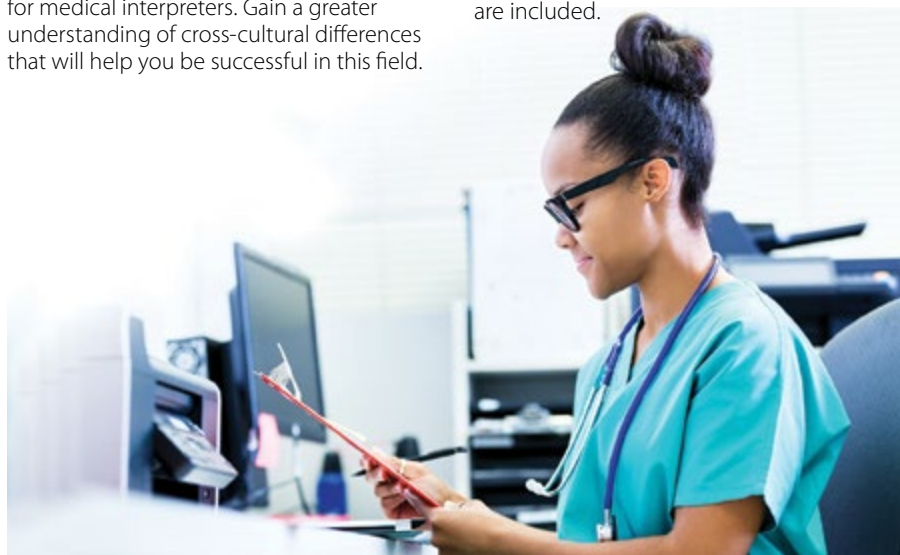
Master the three interpreting techniques – simultaneous, consecutive and sight translation. Upon completion, you will be able to use medical terminology in both Spanish and English and transfer between the two languages. Practice in an intensive online laboratory. Learn to define colloquialisms and slangs. Train in medical protocol and understand the code of ethics for medical interpreters. Gain a greater understanding of cross-cultural differences that will help you be successful in this field.



Medical Office Manager (CPPM)

555 hours \$3,995 (Exam vouchers included)

Learn to handle a broad range of medical office management duties, including patient registration, scheduling, medical records management, accounts receivable, predicting revenue cycles, data entry, compliance regulations, human resources and business processes. This in-depth training prepares you to sit for the (CPPM) offered by the AAPC, CMAA and the CEHRS exams offered by the NHA. Study guide materials, access to practice exams, AAPC membership and a voucher for each exam are included.



For detailed course descriptions, pricing and to register, go to:

Career.PierceCE.com

NONCREDIT ONLINE

CAREER TRAINING

Business Training



AutoCAD 2018 with AutoCAD 3D 2018

240 hours \$3,295 (Exam voucher included)

Master basic and advanced AutoCAD design skills as you gain hands-on practice using the 2D tools in AutoCAD 2018. Learn basic tools for creating and annotating 2D drawings. Gain knowledge of AutoCAD blocks, layouts, templates, annotation styles and sheet sets. The course also covers the use of external references and image files, collaboration tools, publishing and customizations. Gain a thorough grounding in the fundamentals of 3D and explore the advanced 3D modeling workspace. The Autodesk certified curriculum gives you the skills you need to prepare for the Autodesk AutoCAD 2018 Certified User exam, which is included in the cost of the program.

Autodesk Revit Architecture

120 hours \$2,595 (Exam voucher included)

In this program, you begin by learning about the user interface and basic drawing, editing and viewing tools. Then you learn how to build a 3D model with walls, doors, windows, floors, ceilings, stairs and more. Finally, you learn the processes that takes the model to the construction documentation phase where you learn to create sheets and annotated views using dimensions, text and tags as well as working with schedules. As a student, you can download a free version of the Autodesk Revit 2018 software that provides a three-year student version license. This program uses Autodesk certified curriculum and will give you all the skills you need to prepare for the Autodesk Revit Certified User exam.

CCNA: Routing and Switching

180 hours \$2,195 (Exam voucher included)

Learn to install, configure, operate and troubleshoot medium-size routed and switched networks, while preparing for the 200-125 CCNA exam or the 100-105 ICND1 and 200-105 ICND2 exams. This program provides a foundation for basic networking and the knowledge necessary to install, operate, and troubleshoot a small and medium branch office Enterprise network, including operating IP Data Networks, LAN Switching Technologies, IP Addressing, IP Routing Technologies, IP Services such as DHCP, NAT, ACLs, FHRP, Syslog, SNMP v2/v3, Network Device Security, and WAN Technologies. The fee includes a voucher to take the 200-125 CCNA certifying exam.

Certified Ethical Hacker

100 hours \$2,895 (Exam voucher included)

Immerse yourself in a hacker's mindset, evaluating logical and physical security, and exploring every possible point of entry to find an organization's weakest link. Learn how to scan, test, hack and secure your own systems. Practice the five phases of ethical hacking and the ways to approach your target and succeed at breaking in every time. Upon completion, you'll be prepared to sit for the Certified Ethical Hacker (CEH) Exam 312-50.

Certified Global Business Professional

160 hours \$2,495

This program prepares you for the CGBP exam by educating you in global management, global marketing, supply chain management and trade finance. Learn how to develop a global business plan, conduct research in an international environment, understand economic, cultural, legal, political and regulatory differences and use technology to support global trade. Covers logistics, transportation modes, taxes, duties, quotas, trade agreements, use of intermediaries, documentation requirements, insurance, trade conventions and offshore procurement processes.

Entrepreneurship: Start-Up and Business Owner Management

360 hours \$2,095

Interested in starting, owning and operating a business? This program covers everything from financing to leadership. You'll learn about business planning, accounting, finance, communications, marketing and management. You'll also learn the legal requirements for running a business. You'll create a successful business plan that can be used for both internal strategic management and external positioning.

Forensic Computer Examiner

80 hours \$3,095

This comprehensive program prepares you for certification in this emerging field. You'll learn to thoroughly examine digital media and to clearly document, control, prepare and present examination results that will stand up in a court of law. You'll train to identify where and how data is stored, how to recover and interpret data and how to draw appropriate conclusions. Education on the ethics of computer forensics is included along with hands-on learning.

Grant Writing Certificate

300 hours \$2,295

Learn the essentials of writing and acquiring grants for private, public or government use. Learn how to research and find grant opportunities while developing the technical writing skills needed to prepare professional, competitive and successful grant proposals. This course covers the fundamentals of how to prepare and manage budgets. You'll also learn about non-profit management, board governance and fundraising.

UNEMPLOYED?

If you are currently receiving WA unemployment benefits you might be eligible for special funding. Find our approved courses on Career Bridge at CareerBridge.wa.gov 

Help Desk Analyst Tier 1 Support Specialist

120 hours \$1,495

Learn about information technology (IT) problem solving, troubleshooting, commonly used industry tools and the back-office operations of a computer support center. Learn how to improve support center productivity, provide exceptional customer support, handle difficult customer situations, implement best practices for problem solving and exhibit confidence while reducing job stress.

Human Resources Professional

120 hours \$1,795

This program prepares experienced human resource professionals for the PHR certification and covers a broad array of human resources practices. Learn how to contribute to company strategic planning, recruitment, hiring, performance appraisals, employee training, compensation, job analysis, operations, employment laws, regulations, OSHA rules, health and safety, retention and labor relations.

Lean Six Sigma Green Belt and Black Belt

125 hours \$2,295 (Exam vouchers included)

This combined training program covers Lean Six Sigma process improvement projects from start to finish. Green Belt training enables you to deliver measurable, sustainable improvement by finding the root causes of problems and streamlining processes. Black Belt training will further develop your process improvement, project management and leadership skills. This interactive, online program draws on decades of success helping people from large and small businesses create happier customers, increase revenue, reduce costs and improve collaboration.

Management for IT Professionals

390 hours \$2,295

You'll explore the developmental process and how to be successful in creating change in the IT field. Learn about organizational culture and its impact on the way people work and the long-term health of an organization. Learn essential leadership skills, business practices, budgeting strategies, communication skills and more, with the goal of helping you run your IT department successfully.



Multimedia Arts Certificate

360 hours \$3,295

This hands-on program equips you with the conceptual, technical and design skills needed for the multimedia environment. Gain proficiency in core tools for interactive development: Adobe Photoshop, Flash, Premiere Pro, After Effects and shooting and editing digital video. Learn how to create images, pages and motion graphics. Coursework includes digital image retouching and compositing, Web pages and interfaces, scripted and documentary video-making, color and typography studies, video and audio editing and motion graphics.

Mobile & Desktop Web Developer/ Responsive Web Design

480 hours \$2,995

Learn how to build dynamic database-driven websites for desktop and mobile devices, using the latest technologies. Gain intensive web development knowledge to equip you for a rewarding career in this growing field. Master basic HTML (the core technology behind traditional websites), learn CSS for designing pages and make your pages more dynamic with JavaScript. You'll also learn the fundamentals of PHP, SQL, XML, Ajax, HTML5 and explore mobile-specific components of web development such as jQuery and mobile web design.

PMI Risk Management Professional

30 hours \$995 (Exam voucher included)

Gain proficiency in the entire Project Management Institute (PMI) Risk Management Professional program and be prepared to sit for the PMI-RMP exam, which is globally recognized and in demand to mitigate company risk through best practices. Upon completion, you will have in-depth knowledge in risk management analysis, budget lifecycles, project scope risk, project schedules and quantitative risk analysis.

Professional Interpreter

40 hours \$995

Use your bilingual skills to help others communicate and develop the skills to work as an interpreter in a public setting. You might work with immigrants, assist families as they apply for food stamps and Medicaid, or assist refugees completing their applications. Gain a clear understanding of what interpreting is, different interpreting techniques and delivery modes.

Video Game Design and Development

500 hours \$1,995

This is the place to start if you are seeking a professional career as a video game designer and developer. Using a comprehensive and analytical approach to game development, this program offers you the opportunity to learn how to effectively implement technical game ideas, assuming no prior training or experience. The curriculum is divided into four major areas of study: programming languages, mathematics skills, game asset creation, and modern real-time game engines. It will conclude with an independent study phase where you will design, document, and create your own game using all of the programming and game art skills you learned in the core classes.

DID YOU KNOW?

- **Employer payments and company vouchers** are accepted for these courses. Call 253-840-8453 for more information.
- Approved for **MyCAA military spouse funding** (\$4,000 per person)
- Under the **Fee Installment Plan**, you can make up to three interest-free payments. Contact cashiering at cashiering@pierce.ctc.edu or 253-964-6700.
- Some courses qualify for WorkSource/WIOA funding. Call 253-840-8453 for assistance.



For detailed course descriptions, pricing and to register, go to:

Career.PierceCE.com

INSTRUCTORS WANTED

Pierce College Community & Continuing Education is looking for new instructors!

Do you have experience or expertise you want to share with others?

- Art, drawing, hand lettering, painting, sculpture or crafts
- Cell phone photography
- Chair Yoga
- Conversational Spanish
- DIY
- Drum Circle
- EFT Tapping
- Gardening
- Introduction to Pinte rest
- iPad technology
- Line dancing
- Mindfulness
- Outdoor Pursuits
- Reflexology
- Self Improvement
- Seminars/Lectures for 55+
- UFOs, sasquatch or ghost hunting

No degree required, just knowledge and experience with your proposed topic and a passion to share it with others.

Call **253-840-8451** to discuss your idea, or download a course proposal form at www.PierceCE.com and email it to: tclark@pierce.ctc.edu

All students are advised that the Pierce College Marketing & Communications Office takes photographs and shoots videos throughout the year which may include images (as well as audio/video recordings of voices) of members of the student body and reserves the right to use them for publicity, promotional and marketing purposes. The College also reserves the right to take photographs of campus facilities and scenes, events, faculty, staff and students for promotional purposes in any areas on campus or at any Pierce College-sponsored event off campus where subjects do not have a normal and reasonable expectation of privacy. All such photographs and videos are defined as "Directory Information" and are the property of Pierce College and may be used for Pierce College promotional purposes (e.g. electronic and printed publications, websites, classroom use, college ads, etc.) without prior permission of the subjects.

As a general practice, there is no attempt to collect individual photo release forms from students. Instead, we make the assumption that Pierce College students are our best resources for marketing the College and that they will welcome involvement in these activities. However, students who do not wish to have their images/voices used for this purpose must stipulate this in writing to Marketing & Communications at the beginning of the quarter. It is also expected that such students will excuse themselves from photo/video sessions and inform the Pierce College photographer/videographer that they do not wish to be included.

YOU MAY BE ELIGIBLE FOR SPECIAL WORKSOURCE/ WIOA FUNDING

If you are...

- Currently receiving WA unemployment benefits or have received within the last 48 months
- Separated from the military in the last 48 months
- Interested in a noncredit online career training program

Call 253-840-8453 for more information.

K-12 CLOCK HOURS

The Pierce College Community and Continuing Education department is an approved OSPI (Office of the Superintendent of Public Instruction) Clock Hour provider. One contact hour equals one Clock Hour.

EMPLOYER PAID TRAINING

Many employers provide training funds as a benefit to their employees. Contact your human resources office to see if you qualify. We accept company vouchers and employer payments for eligible courses.

CONTINUING EDUCATION UNITS (CEUs)

CEUs provide a permanent record of the completion of significant non-credit educational courses. Ten contact hours equals one CEU.

Questions? Call 253-840-8453.



Solutions that Transform People and Organizations

We provide learning and development services that solve your complex business problems, help your workforce reach the highest level of performance, and improve your operations.



253-583-8865 • www.invistaperforms.org

**Invista Performance Solutions is a collaboration of
Pierce County Community and Technical Colleges**



Community & Continuing Education (CCE) Registration Form/Non-Credit Courses

YRQ:

Quarter Year 20

- ☐ Summer ☐ Fall
- ☐ Winter ☐ Spring

Student Status

- ☐ New ☐ Male
- ☐ Returning ☐ Female

Social Security Number

_____ - _____ - _____

To comply with federal laws, we are required to ask for your Social Security Number (SSN) or Individual Taxpayer Identification Number (ITIN). We will use your SSN/ITIN to comply with federal and state reporting requirements and to conduct institutional research. If you do not submit your SSN/ITIN, you will not be denied access to the college. Pursuant to state and federal law, the college will protect your SSN from unauthorized use and/or disclosure.

Student Identification Number (SID)

_____ - _____ - _____

Your SID is assigned by Pierce College. You will use your SID to register and pay for courses each quarter.



Mail completed form to:

Pierce College Puyallup
Attn: Registration Office
1601 39th Avenue SE
Puyallup, WA 98374-2222

LAST NAME

FIRST NAME

MIDDLE INITIAL

PREVIOUS LAST NAME (if applicable)

ADDRESS

CITY

STATE ZIP

DAY TELEPHONE

EVENING TELEPHONE

BIRTH DATE MM/DD/YR

EMAIL ADDRESS

U.S. CITIZEN? ☐ Yes ☐ No*

If no, what type of VISA do you have?

- ☐ IMMIGRANT/PERMANENT RESIDENT - card # _____
- ☐ REFUGEE ☐ STUDENT VISA ☐ VISITOR

OTHER: _____

*If no, please provide a copy of your document(s)

Have you resided in WA State for the last 12 months?
This will not affect your Community & Continuing Education course fee

- ☐ Yes ☐ No

Need CEU's or Clock Hours?

CEU's and clock hours cost an additional \$20 per course

- ☐ CEU's
- ☐ Clock Hours

What race do you consider yourself to be?

- ☐ White (800)
- ☐ African American (872)
- ☐ American Indian (597)
- ☐ Alaska Native (015)
- ☐ Vietnamese (619)
- ☐ Chinese (605)
- ☐ Filipino (608)
- ☐ Korean (612)
- ☐ Japanese (611)
- ☐ Other Asian or Pacific Islander (621)
- ☐ Other Race _____

Are you of Spanish or Hispanic Origin?

- ☐ Yes (722) ☐ No (999)

Check the statement that best applies to your reason for enrolling:

- ☐ Take courses related to current or future work (J 11)
- ☐ Personal enrichment (Y 15)

Student Signature: _____ Date: _____

TOTAL FEES: \$ _____

Add \$20 per CEU and clock hour course
\$ _____ (x \$20)

PAYMENTS/REFUNDS: Payment is due at the time of registration. No refunds will be given when a student withdraws less than five (5) days prior to the first class session, after the course begins, or if the student does not attend or stops attending. A \$7 registration fee is nonrefundable. For complete information regarding CCE policy on payment and refunds see the bulletin/class schedule or visit the website at www.PierceCE.com. Questions? Contact us at 253-840-8452 or 253-864-3330

OFFICE USE ONLY

- ☐ Phone in
- ☐ Mail in
- ☐ Walk in

Initials & Date _____

COMMUNITY & CONTINUING EDUCATION REGISTRATION AND POLICIES

Community and Continuing Education requires payment at the time of registration. If payment is not received, the student will be dropped from the course(s).

Please register early as many courses fill quickly or may cancel when not enough students enroll.



Register Online

New and returning Community and Continuing Education students may register online and pay at www.PierceCE.com. Online registrations are processed on weekdays during regular business hours. You will be notified if your registration cannot be processed or if the course is full.



Register by Phone

Call 253-864-3330 between the hours of 8 a.m. and 4:30 p.m., Monday through Thursday or 8 a.m. to 3 p.m. on Friday and pay with a VISA or MasterCard debit or credit card.



Register In Person

Register and pay in person at either campus (Fort Steilacoom or Puyallup) through the start date of the course, workshop, or seminar (except Saturdays when the cashier's office is closed).



Register by Mail

Mail your registration form and payment to: Pierce College, Attention: CCE Registration, 1601 39th Avenue SE, Puyallup, WA 98374-2222. Mail-in registrations are accepted up to five days before the start of a course. If your mail-in registration cannot be processed you will be contacted.



Register for Two or More

Please be prepared to provide a mailing address, day and evening phone numbers, email address, citizenship, residence information and birth date for the other person(s).

Payment Vouchers Accepted

If your course fee is being paid by a company voucher or purchase order, call 253-864-3330 to register. The original signed payment voucher or purchase order must be received no later than five (5) days before the course begins.

CONTENT DISCLAIMER

Pierce College has made every reasonable effort to provide information that is accurate at the time of publication. However, the college reserves the right to make appropriate changes in policies, procedures, calendars, requirements, programs, courses and fees. When feasible, changes will be announced prior to their effective dates, but the college assumes no responsibility for giving any particular notice of any such changes. Nothing contained herein shall be construed to create any offer to contract or any contractual rights.

Refund Policy

Pierce College issues refunds by check to the registered student, regardless of original payment type.

Refunds of course fees will be given as follows:

- 100%** When a course is canceled by Community and Continuing Education.
- 100% less \$7** When a student withdraws at least five (5) days prior to first class session.
- 0%** When a student withdraws less than five (5) days prior to first class session, after the course begins or student does not attend (or stops attending) the course.

Deposits on courses, trips, Clock Hours/CEU fees, online courses after usernames and passwords have been issued and/or verified and the \$7 registration fee per course is non-refundable.

For information on the Pacific NW Dental Hygiene Institute refund policies go to www.pierce.ctc.edu/pnwdhi or call 253-964-6248.

If you have an outstanding debt to the college, the college may offset the outstanding debt against any refunds due to you.

Cancellation of Courses

Community and Continuing Education programs are supported by course fees; therefore, courses must meet minimum enrollments to cover costs involved. We cancel courses only when absolutely necessary, but we reserve the right to do so, as well as to reschedule courses and change instructors. When courses are canceled due to low enrollment, we will make every effort to notify students by phone before the start date. Please make sure current day and evening phone numbers are provided to us at the time of registration. If a course is canceled, students may transfer to another course within the same quarter. If students choose not to transfer, they will receive a full refund.

Weather and Emergency Related Closure Information

Pierce College class sessions may be canceled in case of snow, extreme cold, or other emergency. Listen for announcements on local TV and radio news stations for up-to-date information about closures and delays. Also, look online at www.pierce.ctc.edu. In case of class session cancellations due to weather or other emergency related events beyond our control, we will make every effort to accommodate students. However, we do not guarantee make-up hours and will not provide refunds for canceled class sessions.

LIMITATION OF LIABILITY: The college's total liability for claims arising from a contractual relationship with the student in any way related to courses or programs shall be limited to the tuition and expenses paid by the student to the college for those courses or programs. In no event shall the college be liable for any special, indirect, incidental or consequential damages, including but not limited to loss of earnings or profits.

Replacement Fees

A fee will be charged for replacement completion certificates, cards, Clock Hours/CEU forms and other records. Email ce-questions@pierce.ctc.edu or call 253-840-8452 for more information.

Access and Disability Services (ADS)

Contact ADS to request accommodations due to a disability. If you are unsure of your needs, ADS is happy to consult and answer your questions. Contact ADS as soon as possible, as some accommodations take time to implement. More information can be found at www.pierce.ctc.edu/ads.

You can also contact the following:

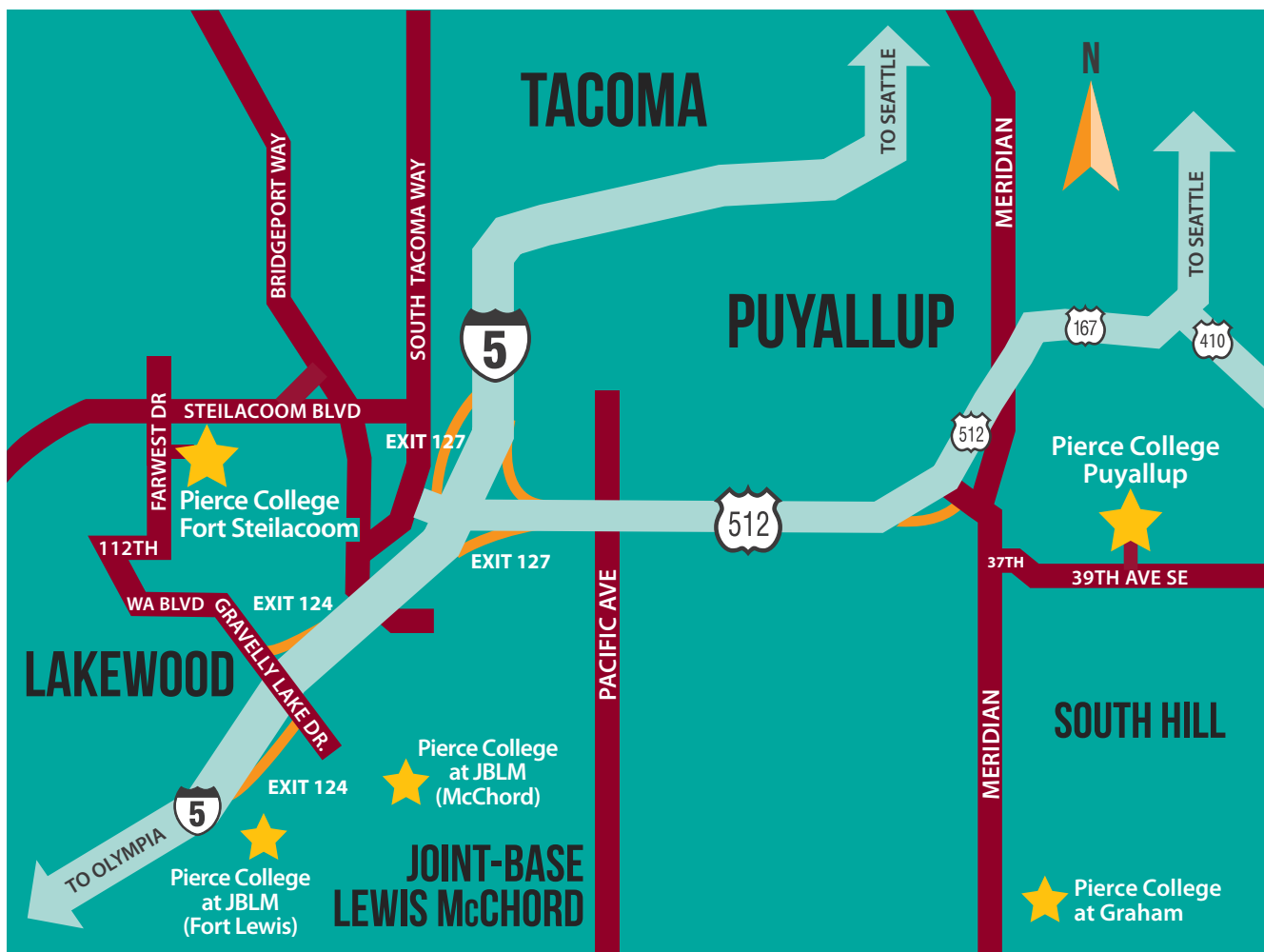
Fort Steilacoom campus
253-964-6468
email: FSADS@pierce.ctc.edu

Puyallup campus
253-840-8335
email: PYADS@pierce.ctc.edu

Children in Community and Continuing Education Courses

Community and Continuing Education courses are designed to meet the learning needs of adult learners, unless otherwise designated. We do not provide on-site day care and do not allow unsupervised children to attend class sessions or sit unsupervised in public areas. Children under the age of 16 that want to register for a course not designated for children must be accompanied by a parent or guardian who is also registered and will be in attendance at all class sessions with them. Prior approval is required from the instructor. To make a request, please call 253-840-8451 and allow 10 days before the course begins for processing of your request. Children must be registered with their legal name and birthdate in order to participate.

MAP AND DIRECTIONS



PUYALLUP (PUY)

Pierce College Puyallup
1601 39th Ave SE, Puyallup 98374
253-840-8400

From I-5, take the Puyallup exit (127) onto WA Hwy 512. Go east on 512 to the South Hill/Eatonville exit. As you exit, continue to the right onto Meridian. After first light, merge to the right onto 37th Ave E. Continue on 37th Ave, which becomes 39th Ave, for about 1 mile. The college entrance is on the left. (Community and Continuing Education staff offices are located on the Puyallup campus in LSC 133.)

Buildings are coded as follows:

| | |
|-----|----------------------------------|
| AAH | Arts & Allied Health |
| ADM | Gaspard Administration |
| CTR | College Center |
| CDP | Garnero Child Development Center |
| HEP | Health Education Center |
| LSC | Brouillet Library & Science |

FORT STEILACOOM (FS)

Pierce College Fort Steilacoom
9401 Farwest Dr SW, Lakewood 98498
253-964-6500

From I-5, take Gravelly Lake Dr. exit (124). Turn right onto Gravelly Lake Dr. Turn left onto Washington Blvd. and stay on it as it curves to the right and becomes Old Military Rd. Turn right on 112th St. and immediately left onto Farwest Dr. Go about 1.5 miles. The college is on the right. Park in lower lot for CAS and HEF, and upper lot for SNR, OLY and RAI buildings.

Buildings are coded as follows:

| | |
|-----|----------------------------------|
| CAS | Cascade |
| CDF | Milgard Child Development Center |
| HEF | Health Education Center |
| OLY | Olympic |
| RAI | Rainier |
| SNR | Sunrise |

PIERCE COLLEGE at JBLM

Fort Lewis Stone Education Center
Bldg 851, Colorado Avenue
253-964-6567 or 253-967-4022
ftlewis@pierce.ctc.edu

Take exit 120 toward Fort Lewis. Merge onto 41st Division Dr. (partial restricted usage road). Turn left onto Colorado Ave. (restricted usage road). The Stone Education Center will be on the left.

McChord AFB Education Center Bldg 851

253-964-6606 or 253-982-5469
McChord@pierce.ctc.edu

Take exit 125 toward McChord Field. Immediately after the installation gate, turn right onto Fairway Rd. (restricted usage road). Turn right onto Lincoln Blvd. (restricted use road). The McChord Education Center will be on the left (in the same building as the library).

PIERCE COLLEGE at GRAHAM

Graham-Kapowsin High School
22100 108th Ave. E., Graham, WA 98338

Accessing JBLM

After you register for courses, you will be mailed a Verification of Enrollment form. This needs to be presented to Military Police for access to the base.

Due to changing security conditions, these procedures are subject to change with minimal notice. Pierce College at JBLM will make reasonable accommodations to facilitate your enrollment process; however, the security of our armed forces cannot be compromised.

DO NOT call from the gate requesting someone to sponsor you. We CANNOT provide sponsors.