

POSSIBILITIES

SPRING TERM 2023

PIERCE COLLEGE

Extraordinary Heroes

Community, love and dedication are the building blocks of the Pierce College Nursing Program

pg. 1

Spring term registration open now!

We're back in person and online! Fun, noncredit classes

pg. 9

Teachers, get your clock hours here!

pg. 18

THINK YOU CAN'T AFFORD COLLEGE? THINK AGAIN.

pg. 3

Launch Your Tech Career in Just Six Months

With our Information Technology (IT) Bootcamps
pg. 17



TELL US WHAT YOU THINK!
Answer one question



COMMUNITY, LOVE, AND DEDICATION ARE THE BUILDING BLOCKS OF THE PIERCE COLLEGE NURSING PROGRAM

By JMarie Johnson Kola

Pierce College is filled with Extraordinary Heroes who have traveled incredible paths and completed inspiring journeys to get here. Astoundingly, the same fundamental story plays out in the lives of many of these amazing people. If you take the time to talk with any student, staff, or faculty member, you will hear similar experiences in the narratives they tell. This special tale is lived out in three acts:

ACT ONE: *The Call to Adventure*
ACT TWO: *The Transformation*
ACT THREE: *The Journey to Home*

The Pierce College Nursing Department is filled with staff and faculty members who have fully experienced this hero's journey. Each has prevailed for the benefit of themselves, students, and the entire Pierce community.

Enjoy this tale, woven through the experiences of five Pierce College Nursing Program employees. When you listen to the extraordinary Human Beings who serve in Pierce College's Nursing Program, they admit that they somehow knew nursing and teaching are exactly what they were meant to do. It's true for **Vicki Dickson**, who serves as the director of this remarkable program. Vicki's mom was a nurse who provided the first inspiration for her extensive volunteer work at St. Clare Hospital medical, surgical and emergency departments. This began at age 14 and continued for 6 years. Encouraging feedback from her first clinical mentor and other nursing practitioners also cemented her passion for nursing education. Comments like, "I wish I could be the kind of nurse you are" were extremely motivating. That did it. Finding a place to give and receive that kind of encouragement and care became a life mission and Pierce College became the ultimate venue!

Linda Fish, an Assistant Professor of Nursing in Pierce

College's Nursing Program, clearly heard the call to this adventure. It was an internal declaration that said, "Nursing is where you need to be." As the wife of a member of the Air Force she was able to work out her calling at military installations around the world before finding her place in Pierce College's Nursing Program.

Likewise, Pierce College became the place for **Mindi Saw**, Associate Professor of Nursing. Mindi always loved going to school; now she loves being a teacher who helps, supports, and guides nursing students to be successful, caring nursing professionals. "It brings me joy! I love what I do! I love my students!" As a natural teacher and cheerleader, Mindi has consistently had the chance to feel all that love given back to her, particularly when she was diagnosed with breast cancer. Her community of students and colleagues in the nursing program gathered around her and loved her through it.

Whether it's being the patient, providing bedside

patient care, teaching future teachers, or envisioning the next innovation, Pierce College's nurses deliver world-class service. **Michelle Weingarden-Bandes**, assistant professor of Nursing, is a fabulous example of this. In addition to being a nurse, Michelle has a background in acting, theatre design, and stage management. She was also an Air Force medic. And to top it all off, she always wanted to be a teacher! So, she uses her many passions, talents, and experiences in her work as the coordinator of the nursing program's simulation lab where she has created commercials, board games, escape rooms, and even Tik Tok videos to engage students in learning! She brings innovation and creativity to her teaching because, in her words, "There are more ways to learn!"

Pierce College's Nursing Program staff and faculty form a strong, brave, and bold group of outstanding,



caring people, who consist of five full-time faculty, ten adjuncts, four staff, and a director. **Kristina Hansen**, Assistant Professor of Nursing is its newest member. She has experienced the Pierce College Hero's Journey as well. "I always knew I'd be a nurse. When I was younger,



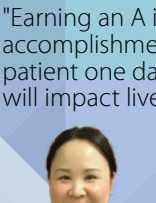
I held my mom's hand at her doctor appointments. I watched open heart and brain surgeries in high

school." Kristina, an Air Force Reservist, began her Pierce College career 6 years ago as an adjunct instructor. Her mentor was Nursing Program director Vicki Dickson, who, true to her commitment shared above, provided encouraging feedback to Kristina. In the fall of 2022, Kristina became tenure-track faculty in the Pierce College Nursing Program.

Student Quotes



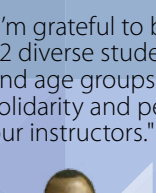
"When researching schools, I specifically put in the work to come to Pierce College's Nursing Program because I was impressed with the numbers. After becoming a part of the cohort I felt that I found a family to learn with!"
- Manelle



"Earning an A is more than just a personal accomplishment. It's going to save a patient one day. What I'm learning today will impact lives tomorrow."
- Bryan



"I want to help others who need my help."
- Lesley



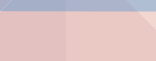
"I'm grateful to be part of a small cohort of 32 diverse students from all backgrounds and age groups. We have a unique solidarity and personal relationships with our instructors."
- Julia



"A solid foundation is the bedrock of knowledge."
- Wasia



"I wanted to become a nurse to advocate for patients."
- Juliet



"I love going to Pierce College's Nursing Program because it is local and very community driven. I feel I will be better prepared to serve the community in which I live."
- Alisha

Pierce College's Nursing Program staff and faculty pride themselves on being and setting the gold standard of service to students, each other, the college, and the community. In addition to their teaching duties, faculty members often work in hospitals and at patients' bedsides to keep up to date on their clinical expertise. They triumphantly proclaim, "We are very proud

of this program. We love our students, staff and faculty. And we love Pierce College! It is home."

You could be a Pierce College Hero, and you just don't know it yet ... or maybe you do. Come engage with these and many other Pierce College Heroes who are dedicated to your journey and your success! ■



"I choose to be a nurse because I want to provide the best possible quality of care to patients, one that is holistic and individualized. I believe that Pierce College is the best place for me to realize becoming the best nurse."
- Denis

IMPORTANT DATES

| | |
|---|--------------------|
| Presidents Day - college closed | Feb. 20 |
| Open spring registration begins (new students) | Feb. 21 |
| Last day of instruction, winter session 1, JBLM | March 10 |
| Last day of instruction, winter session 1, FS/PY | March 20 |
| Finals FS/PY | March 21-23 |
| Last day of instruction, winter session 2, FS/PY, JBLM . . | March 23 |
| Spring term session 1 begins | April 3 |
| In-service Day - no classes/college closed | May 5 |
| Summer/fall registration begins (currently enrolled students) | May 8 |
| Open summer/fall registration begins (new students) . | May 22 |
| Memorial Day - college closed | May 29 |
| Last day of instruction, spring session 1, JBLM | June 7 |
| Last day of instruction, spring session 1, FS/PY | June 13 |
| Spring session 1, final exams FS/PY | June 14-16 |
| Graduation | June 16 |
| Last day of instruction, spring session 2, FS/PY, JBLM . . . | June 16 |
| Juneteenth - college closed | June 19 |

The full academic calendar is at www.pierce.ctc.edu

Possibilities Vol. 56, No. 3 • USPS 7034 • Spring 2023
Published quarterly by Pierce College, 9401 Farwest Dr. SW, Lakewood, WA 984 98-1999.
Periodicals postage paid at Tacoma, WA. **POSTMASTER:** Send address changes to Pierce College, Marketing & Communications, 1601 39th Ave. SE, Puyallup, WA 98374-2222.

Student Life AT PIERCE COLLEGE

Here at Pierce College, we believe in creating quality educational opportunities for a diverse community of learners to thrive in an evolving world. Student Life plays a huge role in making this mission possible.

Student Life enables students to connect to the college and play an integral part in student retention and student success. The programs and activities that we create and support help students develop the skills needed to succeed in college, the workplace and in society.

Go Raiders!

Clubs and Organizations – A great way to find students with common interest is to join a club! If you don't see a club that interests you, think of creating one. Clubs are student led and initiated communities on campus. For more information about clubs, or how to begin a new one, visit the Student Life Office or visit the Clubs web page. www.pierce.ctc.edu/student-programs



Student Government – The Associated Students of Pierce College Fort Steilacoom (ASPCFS) Student Government holds meetings throughout the quarter which are open to all students. Some of the areas where Student Government is involved are chartering new clubs, recruiting students for a variety of college committees and councils, participating in state legislative trainings, and much more! Joining Student Government is a great way to get involved and be a leader on campus. Student Government positions open in early spring quarter, if you are interested in joining the team for the following academic year.



EXPERIENCE PIERCE

The best way to get to know Pierce College is to visit the campus! We welcome you to experience both of our beautiful campuses with a walking or virtual tour and learn more about how we can help you get started on your educational path.

- Virtual tour: <https://tour.lcp360.com/nocache/pierce/>
- Walking tour sign up: www.pierce.ctc.edu/visit

IF YOU'RE IN NEED OF ASSISTANCE IN ANY OF THE FOLLOWING AREAS, DON'T HESITATE TO REACH OUT.

FINANCIAL SUPPORT

Our Financial Aid specialists are here to help! They will help you explore all options available to you, including grants, loans and emergency funding. All students are welcome to consult with Financial Aid – even if you've never worked with them in the past.

► **THINK YOU CAN'T AFFORD COLLEGE? THINK AGAIN.**
YOU can get a Washington College Grant.
Visit: wsac.wa.gov/wcg

► More Info: www.pierce.ctc.edu/financial-aid or financialaid@pierce.ctc.edu

BASIC NEEDS SUPPORT

We understand that support is vital along your educational journey. Pierce Advocacy and Resource Connections (PARC) provides critical information that can help you find food, medical, childcare and financial assistance.

► More Info: www.pierce.ctc.edu/help

TECHNOLOGY SUPPORT

We offer the tools you need to succeed in online learning! Equipment such as Chromebooks, Wi-Fi hotspots, calculators and more are available to students to borrow for the quarter. The Student Technology Assistance Team (STAT) is available to help answer technology-related questions at stat@pierce.ctc.edu.

The Pierce College eLearning Team is also available to answer questions related to Canvas at elearning@pierce.ctc.edu. All other general questions can be sent to helpdesk@pierce.ctc.edu.

► More Info: www.pierce.ctc.edu/student-support-technology

ACADEMIC SUPPORT

Access the Library, Tutoring and the Writing Centers online or in-person. You can also stay engaged with your campus community by joining clubs and activities.

► More Info: www.pierce.ctc.edu/student-support-resources

Community Events at Pierce

More games, information, and tickets
PierceRaiders.com

Tickets for these Pierce College events and more available at
PierceCollegeEvents.com

ATHLETICS

Tickets: FREE



Baseball Home Schedule

Feb. 18, 11 a.m. - vs. Shoreline
March 4, 11 a.m. - vs. Columbia Basin
March 5, 11 a.m. - vs. Columbia Basin
March 12, noon - vs. Bellevue
March 24, 2 p.m. - vs. Spokane
March 25, 11 a.m. - vs. Big Bend
April 2, noon - vs. Centralia
April 16, noon - vs. Olympic
April 23, noon - vs. Clark
April 30, noon - vs. Lower Columbia
May 6, noon - vs. Tacoma
May 12, 1 p.m. - vs. Grays Harbor

Home Field - Baseball

Puyallup Recreation Center
808 Valley Ave. NW
Puyallup, WA 98371

NWAC WEST DIVISION CHAMPIONS
2011, 2012, 2013, 2014

Softball Home Schedule

March 18, noon - vs. Skagit Valley
March 29, 4 p.m. - vs. Highline
April 1, noon - vs. Everett
April 11, 4 p.m. - vs. Bellevue
April 22, noon - vs. Douglas
April 29, noon - vs. Shoreline
May 9, 4 p.m. - vs. Olympic
May 13, noon - vs. Edmonds

Home Field - Softball

Heritage Recreation Center,
9010 128th St., Puyallup

NWAC WEST DIVISION CHAMPIONS
2007 - 2008 - 2009 - 2010 - 2011 - 2013

ART

All exhibits are FREE and open to the public

PIERCE COLLEGE PUYALLUP GALLERY

Arts and Allied Health Bldg. Gallery

WINTER ART SHOWS:

Artist Mauricio Robalino

Jan. 17 to Feb. 21

Closing reception Feb. 21, 2:30 - 5:30 p.m.

**Nostalgialicious Part Neux:
Artists Scott Aigner and Mike Hill**

Feb. 27 to March 7

Closing reception March 7, 2:30 - 5:30 p.m.

SPRING ART SHOWS:

Artist Joseph Batt

April 3 to May 4

Closing reception May 4, 2:30 - 5:30 p.m.

Student Art Show

May 15-31

Awards and closing reception May 31,
2:30 - 5:30 p.m.

MUSIC

Tickets: \$5 general admission.
FREE for Pierce students with I.D.

All concerts are held in the Puyallup Arts and Allied Health Bldg., Black Box Theatre, unless noted otherwise.

Band Concert

March 7, 7 p.m.

Tickets: FREE general admission.

Choir Concert with Chamber Music

March 10, 7 p.m.

THEATRE

Tickets: \$5 general admission.
FREE for Pierce students with I.D.

PIERCE COLLEGE FORT STEILACOOM THEATRE

Black Box Theatre/Studio 320, Cascade Bldg.

**Guest Artist: Indigenous
Storytelling with Danny
Marshall**

Feb. 24, 10 a.m.

Spring Production

May 25-27, 7 p.m.

PIERCE COLLEGE PUYALLUP THEATRE

Arts and Allied Health Bldg.
Black Box Theatre, AAH 110

Student Performance Showcase
March 3, 7 p.m.

**Guest Artist/Workshop &
Performance**

May 31, June 1-2, 7 p.m.

SCIENCE DOME

Fort Steilacoom, Rainier Bldg. RAI 263

www.PierceCollegeDome.com

\$8 general admission (age 3+).

FREE for Pierce students with I.D.

All Ages Shows

Fridays at 6 p.m. and 7:45 p.m.

Interactive Children's Shows

Saturdays at 1 p.m., 2:45 p.m., and 4:30 p.m.



Running Start

THIS IS YOUR JUMPSTART!



Running Start is a statewide college program for academically qualified juniors and senior high school students to enroll in courses to fulfill high school graduation requirements and earn college credit.

WHAT ARE THE BENEFITS?

- Graduate from high school while completing an associate degree
- Experience a diverse adult learning environment and student community
- Grow a partnership with college student services and faculty and enjoy the freedom to explore your academic choices
- Early access to your Career Pathway w/multiple degree and class scheduling options
- Engage in college activities and events (except intercollegiate athletics)

RUNNING START BASICS

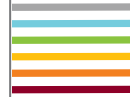
- Dual credit program for HS juniors and seniors
- Available fall, winter, and spring terms
- May take up to 15 college level credits per term
- Tuition paid through Running Start
- Students qualifying for fee waiver can take up to 20 credits
- 15 credits = full time class load
- 100-level courses and above
- 1 high school credit = 5 college credits

HOW DOES A STUDENT QUALIFY?

- Must be a Junior or Senior in high school
- ENGL&101 Placement
 - All students are required to take English Guided Self-Placement
 - MUST place into ENGL&101 (English Composition)
- College math placement
 - Math completed at high school for high school graduation requirements
 - To take college-level math for an associate degree, students must take Math Guided Self-Placement

www.pierce.ctc.edu/running-start

Career Pathways



YOUR ROADMAP TO SUCCESS

Guided Pathways help you earn your degree faster. We offer one-to-one advising to help you customize your path and support your success. Whether you've chosen a career or you're still deciding, Pierce College provides easy-to-use tools to help you explore and set career goals. And, if you change your mind along the way, your support network will help you find the career path that's right for you.

PIERCE COLLEGE CAREER PATHWAY AREAS

Arts, Humanities, and Communication • Business • Education • Healthcare • STEM • Social and Behavioral Sciences, and Public Services

EXPLORE CAREER PATHWAYS



Not sure which career path to pursue? Check out the career exploration tools to discover pathways that fit your interests and skills.



Each Career Pathway includes programs of study. The program you choose is your specific focus within the Career Pathway. Programs of study are listed on the Career Pathways web pages and in the college catalog.



A course map is a sequence of courses designed by Pierce College faculty to meet the requirements for each program of study and earn a degree or certificate. Course maps are available in the college catalog and on the Career Pathways web pages.

CREATE A PLAN

You will work one-on-one with a student success coach who will help you create customized plans to support your success.



Your Education Plan is your customized schedule of courses and activities needed for graduation. It will keep you informed of your progress towards degree or certificate completion.



A funding plan will help you stay on track paying for college.



A success support plan will help you balance your academic life with issues such as transportation, work scheduling, child care and more.

CONNECT WITH SUPPORT



Throughout your time at Pierce College, you'll be connected with a support network of instructors, student success coaches, financial planning advisors, tutors, and support services, all focused on your academic success.

CONTACT US

Learn more at www.pierce.ctc.edu/pathways.

Programs

UNIVERSITY TRANSFER DEGREES

If your goal is a bachelor's degree or beyond, it makes sense to attend Pierce College for your first two years. You'll pay a fraction of the cost for the same education and enjoy small class sizes and hands-on learning.

Associate in Arts (AA-DTA)

Associate in Science (AS-T)

- AS-T Track 1 for science pre-majors in biological sciences, chemistry, environmental/resource sciences, geology and earth science
- AS-T Track 2 for science pre-majors in engineering, computer science, physics and atmospheric sciences

Associate in Biology (DTA/MRP)

Associate in Business (DTA/MRP)

Associate in Construction Management (DTA/MRP)

Associate in Math Education (DTA/MRP)

Associate in Music (DTA/MRP)

Associate in Pre-Nursing (DTA/MRP)

BACHELOR OF APPLIED SCIENCE DEGREES

Pierce College now offers the following six Bachelor of Applied Science degrees:

BAS in Applied Business Management** – The Bachelor in Applied Science in Applied Business Management (BAS-ABM) is a cohort-based, full-time, two-year program. With this affordable, convenient and quality baccalaureate degree, you gain 21st century technical, transferable and lifelong-learning skills employers demand.

BAS in Construction Management** – Students who complete the Associate in Construction Management can seamlessly transition into the Bachelor of Applied Science in Construction Management (BAS CM). The BAS CM provides greater depth into the skills and knowledge needed to gain employment within the construction management field.

BAS in Dental Hygiene** – This program enjoys national acclaim and recognition for consistently graduating clinically skilled and intellectually strong dental hygienists.

BAS in Fire Services Leadership and Management** – This professional development program trains existing fire service professionals to navigate the administrative, technical and operational demands of fire departments.

BAS in Homeland Security Emergency Management** – This online and hybrid program is part of a guided career pathway designed to prepare students to become 21st century emergency management professionals.

BAS in Teaching** – This degree leads to teacher licensure with dual endorsements in both P-3 education and P-3 special education. The program was designed with best practices in teacher preparation in mind.

TRANSITIONAL EDUCATION

Whether you need to finish your high school diploma or learn English, Pierce College has a program to help you build your educational foundation.

Pierce College Adult Diploma (PCAD)

Basic Education for Adults (BeDA)

English as a Second Language (ESL)

General Education Development (GED)

PROFESSIONAL/TECHNICAL DEGREES AND CERTIFICATES

Pierce College's professional/technical degrees and certificates are designed to provide students with the technical and related skills needed for successful employment.

DEGREES

Administrative Assistant Medical Office

Administrative Office Assistant

Applied Accounting

Applied Business (AAS)

Applied Business (AAS-T)

Computer Network Engineering

Construction Management

Criminal Justice

Data Management & Analytics

Digital Design

Early Childhood Education (AAS-T)*

Emergency Medical Services (AAS-T)

Fire Services Leadership and Management (FSLM)

Health Information Technology & Analytics

Homeland Security Emergency Management

Kinesiology (AAS-T)*

Medical Billing and Coding

Military Technology and Leadership (AT)

Nursing (ADN)

Occupational Safety and Health (AAS-T)^*

Office Management

Paraeducation (AAS-T)

Physical Therapist Assistant^^++

Social Service/Behavioral Health

Veterinary Technology**

CERTIFICATES (CONTINUED)

Crime Analysis and Investigations

Criminal Justice

Disaster Risk Management

Emergency Medical Services

EMT

Entrepreneurship

Explorer/Cadet Pre-Law Enforcement

Fitness Coach

Forensic Technology

Health Information Technology

Healthcare Emergency Management

Homeland Security Emergency Management

Human Resource Management

LPN to RN Bridge

Medical Billing and Coding

Microsoft Systems Administrator

Network Infrastructure

Paraeducator - Initial Certificate

Paraeducator - State Initial Certificate

Personal Training

Project Management

Project Management Short Certificate

Sales

Small Business Entrepreneurship

Social Media Marketing

Social Service/Behavioral Health

State Early Childhood Education

State Initial Early Childhood Education

State Short Early Childhood Certificate of Specialization - Administration

State Short Early Childhood Certificate of Specialization - Family Child Care

State Short Early Childhood Certificate of Specialization - General

State Short Early Childhood Certificate of Specialization - Home Visitor/Family Engagement

State Short Early Childhood Certificate of Specialization - Infant Toddler Care

State Short Early Childhood Education Certificate of Specialization - School-Age Care

Supervision and Management

Tribal Homeland Security Emergency Management

UX/UI Design

Virtual Design and Construction for Construction Management

* Applied Science – Transfer Degree (AAS-T)

** Special admissions procedures apply

^ Collaboration with Edmonds Community College

^^ Collaboration with Whatcom Community College

+ Collaboration with the Tacoma Fire Department

++ Associate in Science (AS)

PIERCE NEWS

Introducing Pierce College's new **Chancellor and CEO!** After 55 years of excellence, and 45 years of being led by one Chancellor/CEO, Pierce College has a new leader and champion. She is **Dr. Julie A. Manley White.** The busy executive was happy to take time to respond to a few questions and share a little about herself.



As the new Chancellor and CEO of Pierce College, what are your priorities?

As Chancellor and CEO of the Pierce College District, I will lead the college in advancing our work to become an anti-racist institution and achieve our institutional outcomes to fulfill the district mission: to create quality educational opportunities for a diverse community of learners to thrive in an evolving world. The Pierce College district includes Pierce College Puyallup, Pierce@Joint Base Lewis McChord, Pierce College Fort Steilacoom, numerous extended learning sites, and a robust e-learning program.

How have you prepared for this moment?

I have served as president of Pierce College Fort Steilacoom since 2019, advocating locally, statewide, and nationally to support our students. As a first-generation student from a rural community, I understand the life-changing power of higher education.

Over the past 30 years, I have served at a variety of institutions, including community colleges, liberal arts colleges, and research universities, with roles in student services, academic administration, research administration, health education, and women's services. I hold a Ph.D. in Educational Leadership from University of Rochester; a Master in Education in Counseling from Xavier University, and a B.S. in Education in English Literature from Miami University. I am also an alum of the Aspen Institute's Rising Presidents Fellowship in 2018-2019.

What is your vision for Pierce College, its students, staff, faculty, and community?

I see us fulfilling Pierce College's vision of producing Innovative and engaged learners enriching our local and global communities. We do this work through collaborative partnerships with PreK-12 systems, transfer partners, workforce and industry, and community-based organizations.

Who should attend Pierce College? Why?

Everyone, of course! Attending Pierce Community College benefits the individual as well as the community. Attaining a higher education degree enables our graduates to contribute to community vibrancy, enjoy good paying jobs, build economically strong communities, and increase civic engagement and volunteerism.



Pierce College District was named one of the top 10 community colleges in the nation in 2019 and 2021 for the \$1 million Aspen Prize for Community College Excellence and a top 25 semifinalist for 2023. The Aspen prize is awarded every two years.

THE PIERCE COLLEGE LEADERSHIP TEAM

BOARD OF TRUSTEES

Steve Smith, Board Chair
Therese Ngo Pasquier, Vice Chair
Lisa Boyd
Clemencia Castro-Woolery
Brett Willis

CHANCELLOR AND PRESIDENTS

Julie A. White, Ph.D.
Chancellor and CEO
President, Pierce College Fort Steilacoom
Matthew A. Campbell, Ed.D.
Interim President, Pierce College Puyallup

DIRECTORY Visit www.pierce.ctc.edu or call

| | FORT STEILACOOM | PUYALLUP |
|-----------------|--|--|
| Information | 253-964-6500 | 253-840-8400 |
| Admissions | 253-964-6501 www.pierce.ctc.edu/admissions | |
| Advising Center | 253-964-6705 www.pierce.ctc.edu/advising | 253-840-8431 www.pierce.ctc.edu/advising |
| Financial Aid | 253-964-6544 www.pierce.ctc.edu/financial-aid | 253-964-6544 www.pierce.ctc.edu/financial-aid |
| Registration | 253-964-6615 www.pierce.ctc.edu/register-and-pay | 253-840-8413 www.pierce.ctc.edu/register-and-pay |
| Bookstore | 253-964-6508 www.pierce.ctc.edu/bookstores | 253-840-8411 www.pierce.ctc.edu/bookstores |
| Campus Safety | 253-444-0325 www.pierce.ctc.edu/campus-safety | |
| Testing Center | 253-964-6521 www.pierce.ctc.edu/testing-centers | 253-840-8343 www.pierce.ctc.edu/testing-centers |

For directions, campus maps and building floor plans, visit: www.pierce.ctc.edu/maps

For parking permits, courtesy services, traffic/parking rules, student code of conduct, district policies and more, visit www.pierce.ctc.edu/campus-safety.

What will they get out of the experience?

A quality education for less cost than they think, career-connected learning that gets them in good paying jobs faster, an incredible amount to possible pathways to focus on, and experienced advisors and counselors to help guide them on their way.

SPRING TERM 2023 NONCREDIT COURSES

Join instructor Betsy Ward in any of her four art classes being offered this term. See page 9 for details.

COMMUNITY & CONTINUING EDUCATION



Tulip Fields, Skagit County
Watercolor on paper
by Betsy Ward



www.PierceCE.com

PERSONAL ENRICHMENT CLASSES

PAGE 9

PERSONAL DEVELOPMENT

Explore new interests, develop new skills, and find your creative outlet.

ONLINE CLASSES

PAGE 15

PROFESSIONAL DEVELOPMENT

Advance your career, sharpen your skills or prepare for employment with our convenient, 100% online courses. Check out our wide selection of noncredit courses for the best fit.

KEY FOR PERSONAL ENRICHMENT COURSES

| | | | | |
|--------------------|---|-------------------------------------|-------------------|----------------|
| Course Title | Flagging | | | |
| Course Description | Certified flaggers are responsible for... | | | |
| Style | IN PERSON | PUY CTR 276 | Fee: \$79 | Course Fee |
| Course Day(s) | Friday | 9 a.m. to 4 p.m. | 1 session: Feb. 3 | Course Times |
| Instructor | Pollard | | | Course Date(s) |
| | | Location: campus/bldg/room) | | |
| | | PUY = Puyallup FS = Fort Steilacoom | | |

Supply fee. Cash due to the instructor on the first day of class.

This class is HOT! Register early!

Zoom WITH US

Courses marked **VIRTUAL** are conducted via Zoom. No account or password required. Just click your assigned link to connect with your instructor and their virtual classroom.

Online CLASSES

Courses marked **ONLINE** start anytime you choose! Access granted for 3 months.

In Person CLASSES

Courses marked **IN PERSON** are conducted face to face with your instructor.

PERSONAL ENRICHMENT

NONCREDIT

Contact CE-Questions@pierce.ctc.edu for your supply list prior to the start of class.

Art & Creativity

Drawing

If you want to learn or hone your drawing skills or just want to have fun, bring your paper and pencils to this five-week course. You will learn to draw from observation and other techniques. Line quality and shading methods will also be explored. Other media such as paper and charcoal are possibilities. ****Request a supply list by emailing CE-Questions@pierce.ctc.edu.****

IN PERSON PUY AAH 236 Fee: \$109
Tuesday 6-7:30 p.m.
Ward 5 sessions: April 11 to May 9

NEW! Paint Your House in Watercolor

Want a special keepsake to remember your childhood home? A gift to commemorate

a friend's purchase of a new house? Create a watercolor house portrait! Painting houses in watercolor is a doable project for artists of all skill levels – and the result is a beautiful and meaningful piece of art. Bring a photo of the house for reference. ****Request a supply list by emailing CE-Questions@pierce.ctc.edu.****

IN PERSON PUY AAH 236 Fee: \$59
Saturday 9 a.m. to noon
Ward 1 session: April 29

NEW! Watercolor Note Cards: Tulips

Indulge your creative side with this fun and mindful activity. Not only will you feel more relaxed, but you'll have learned how to let loose and allow the watercolors to show you their magic! We will be painting tulips from photos up close or from a distance. Mt. Vernon's Tulip Festival is great inspiration. ****Request a**

supply list by emailing CE-Questions@pierce.ctc.edu.**

IN PERSON PUY AAH 236 Fee: \$59
Saturday 9 a.m. to noon
Ward 1 session: April 15



NEW! Watercolor Flowers

We all love flowers. Let's paint those spring beauties in flowing watercolor. We will use wet-on-wet, dry brush and other techniques to create luscious color and fluid movement within your paintings. ****Request a supply list by emailing CE-Questions@pierce.ctc.edu.****

VIRTUAL Fee: \$129
Thursday 6-8 p.m.
Ward 6 sessions: April 13 to May 18

Body, Health, Spirit, Mind & Soul

Developing Your Intuition Using Astrology and Tarot

Develop and understand your own intuitive powers. Please first have a basic understanding of the tarot. We'll study cycles and trends in your life, how to work with daily transits using the monthly calendar, compatibility charts, celebrity charts and your solar returns for the year. Bring your favorite tarot deck to class.

IN PERSON FS OLY 202 Fee: \$119
Thursday 7-9 p.m.
Tognetti 7 sessions: April 6 to May 18



NEW! Certificate in Mindfulness

Lay the foundation for a career in health and wellness coaching with a deep understanding of the practice of mindfulness. This course will provide in depth knowledge of mindfulness and meditation, mindfulness and happiness, mindful eating, mindful movement, and mindful relationships. **Start anytime!**

ONLINE 3 MONTH ACCESS Fee: \$109

Secrets of Better Photography

Whether you use a DSLR, a point-and-shoot camera, or your phone for your photography, you will learn how to get the best results from your camera. You can take your camera out of auto mode after learning about lighting, motion, aperture, shutter speed, and ISO settings. You will also explore common photography topics, including portraiture, children's photography, pet photography, and digital editing. Enhance your photographer's eye and your photos. **Start anytime!**

ONLINE 3 MONTH ACCESS Fee: \$119



Photographing Nature with Your Digital Camera

Learn about the many aspects of outdoor photography as well as how to master your digital camera's controls and features. You'll explore composition and lighting issues and find out how to take beautiful photos of landscapes, flowers, trees, and water. Along the way, you'll delve into your camera's shutter speed and aperture controls so that you'll be able to capture the photos you really want. You will discover how to use your computer to process your photos and digitally correct the most common problems. **Start anytime!**

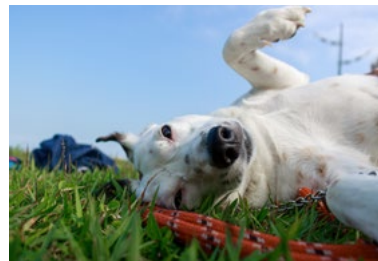
ONLINE 3 MONTH ACCESS Fee: \$119

READY TO REGISTER? Go online at www.PierceCE.com or call 253-864-3330

COMMUNITY & CONTINUING EDUCATION

Career & Trade Skills

NEW! Start a Pet Sitting Business



Business

Master the essentials of running a cat and dog sitting business. You'll begin with pet care, including nutrition, exercise, first

aid, and the identification of common diseases. Learn the basics of first aid and find out how to administer pills, liquid medications, and injections to an uncooperative cat or dog. You will discover how to handle home visits and impress your potential clients. You'll also explore sticky situations that can arise, such as lost pets, pets that die unexpectedly, and pets that need immediate veterinary care. In addition, you will delve into finances and explore start-up costs, accounting, fee setting, business plans, and low-cost marketing. Learn how to obtain required insurance, hire employees as your business expands, and entice financial institutions to loan you money. Considering expanding your pet sitting services? Is a dog-walking service right for you? Can you train puppies? Do you want to look after other animals, including horses? You will have all the knowledge you need to become a professional pet sitter and how your pet sitting business can grow to continually challenge and satisfy you. **Start anytime!**

ONLINE 3 MONTH ACCESS Fee: \$119

Flagging

Certified flaggers are responsible for worker and public safety during road construction, utility work and maintenance operations. Students earn a flagger certification card, which is valid for three years in Washington, Oregon, Idaho and Montana. Students must be at least 18 years old. There is an open-book test at the end of class in which you must have a passing score of 80 percent in order to receive your certification. Book included in course fee. Bring a sack lunch.

IN PERSON FS OLY 202 Fee: \$79
Friday 9 a.m. to 4 p.m.
Pollard 1 session: April 14

N PERSON PUY ADM 136 Fee: \$79
Friday 9 a.m. to 4 p.m.
Pollard 1 session: May 5

IN PERSON PUY ADM 136 Fee: \$79
Friday 9 a.m. to 4 p.m.
Pollard 1 session: June 9



Stay Active and Independent for Life (SAIL) Program Leader Training

If you are a health, fitness, nursing or senior care professional, join our online SAIL program. Get the training you need to lead SAIL exercise sessions to assist older adults to improve strength, balance and assist them with their ability to perform daily tasks. Continuing Education Units (CEUs) are included in the course fee.

ONLINE April 3 to June 16 Fee: \$299

Dance, Fitness & Training

Space is limited, register early!

Tai Chi - Beginning

Designed to accommodate the beginner. Emphasis will be placed on establishing a solid foundation of fundamentals. You will enhance internal strength and energy while improving your balance, vitality, and stamina. Relieve inner stress and help calm the mind. **NO CLASS MAY 6.**

IN PERSON PUY CTR 102 Fee: \$119
Saturday 9-10 a.m.
Llanos 8 sessions: April 15 to June 10

Tai Chi - Intermediate/Advanced

For students who have taken Beginner's Tai Chi. We'll review Section 1A of the Yang Family Long Form moving into Section 1B (completing the form) and into a deeper understanding of breath and movement while following the classics of Tai Chi. **NO CLASS MAY 6.**

IN PERSON PUY CTR 102 Fee: \$119
Saturday 10:15-11:15 a.m.
Llanos 8 sessions: April 15 to June 10

NEW! Emei Mountain Qigong

Emei Qigong is a school of Chan (Zen) Qigong that promotes good health, emotional balance and awareness through practices that strengthen the body's vital energy (chi). Its methods have been practiced on the summit of Mt. Emei, China for more than 750 years. This class will introduce the basic warmups, fundamental movements, breathwork and also learn Meridian Tapping. **NO CLASS MAY 6.**

IN PERSON PUY CTR 102 Fee: \$119
Saturday 11:30 a.m. to 12:30 p.m.
Llanos 8 sessions: April 15 to June 10

NEW! Breathwork for Better Health

In this 4-week course you will begin to explore the ways the breath affects the nervous system to influence your overall health and wellness. You will learn breathing techniques that can be used to bring calm and balance to the nervous system. With a more balanced nervous system you can experience less stress, lower anxiety, boosted digestion, and better rest.

IN PERSON PUY ADM 136 Fee: \$69
Saturday 9-10 a.m.
DeLuca 4 sessions: April 8-29

Beginning Tap Dancing

Have you always wanted to learn to tap dance but didn't know where to start? This is the place to discover the fun and joy of Broadway style and rhythm tap dance or refresh your skills if it has been a while since your tap shoes have been on. A fun, energetic and welcoming

group that is geared to adults with an emphasis on basic rhythms and moves. Learn a new vocabulary: brush, flap, hop, shuffle, stomp, stamp, and how to do basic turns. Tap shoes are required: you can contact the studio for additional information on dance-wear or attire for class. DTNW-253-565-5149 or email dancetnw@gmail.com. **NO CLASS MAY 29.**

IN PERSON DTNW* Fee: \$139
Monday 6-7 p.m.
Kirk-Stauffer 10 sessions: April 3 to June 12

Stretching and Conditioning

Learn basic conditioning to increase mobility and strength. Ideal for non-dancers and gently paced for adults to improve postural alignment, core strength, and flexibility – not cardio. Please bring a yoga mat to class for floor work.

IN PERSON DTNW* Fee: \$119
Wednesday 9-10 a.m.
Kirk-Stauffer 8 sessions: April 5 to May 24

***DTNW - Dance Theatre Northwest**
2811 Bridgeport Way W., Suite #24
University Place, WA 98466

Home & Garden

CERTIFICATES NONCREDIT

Improve your skills, get a professional boost, and save money! Earn a certificate by taking a series of courses.

NEW! Kitchen Herbalist Certificate – 5 Courses

In this new certificate program, earn your certificate and learn how to properly use herbs and spices in your home for you and your family's needs. You will discover how to research and choose herbs for specific situations and which type of remedy may be the best solution. We will also cover how to dry, harvest and store herbs as well as how to make several types of herbal preparations for both topical and internal uses. **Courses included: Herbal Medicine Basics, Herbal Supplements and Nutrition, Herbal Infusions, Cooking with Herbs and Spices, and Herbal Topicals.**

IN PERSON **PUY LSC 150** **Fee: \$189**
Saturday **5 sessions**
Bailey See each course for dates/times

NEW! Organic Backyard Gardener Certificate – 5 Courses

In this new certificate program, earn your certificate and learn how to successfully cultivate your own organic edibles in your garden and landscape. You will understand the basics of organic gardening, design, how to identify plants, foraging techniques and how to care for and keep your plants healthy with natural pest control, companion plants and the importance of gardening with the seasons. **Courses include: Organic Gardening Basics, Gardening with the Seasons, Backyard Foraging, Diagnosing Plant Problems, and Create the Ultimate Edible Garden.**

IN PERSON **PUY LSC 150** **Fee: \$189**
Saturday **5 sessions**
Bailey See each course for dates/times



Canning Basics

Summer will soon be upon us and this course will teach you how to home can your garden's fresh bounty or local farmer's market fresh finds. You will become familiar with canning equipment and how to safely can for your pantry. Home canning is great for special diets, saving money on your food budget and providing good wholesome food for you and your family. Hands on project will include making a batch of home-made jam. **SUPPLY FEE: \$5 cash due at the start of class.**

IN PERSON **PUY CDP** **Fee: \$49**
Saturday **10 a.m. to noon**
Basquez **1 session: June 10**

Pressure Canning

Have you ever thought about home canning vegetables? What about canning meat? In this introductory course to home pressure canning. We'll familiarize you with how to safely pressure can vegetables and meat in your own home. This class is a great way to take the "scary" out of pressure canning. There will be a hands-on project and you'll be taking home a jar of home canned goodness for your pantry. **SUPPLY FEE: \$5 cash due at the start of class.**

IN PERSON **PUY CDP** **Fee: \$49**
Saturday **10 a.m. to noon**
Basquez **1 session: April 15**



Herbal Supplements & Nutrition

Most people may think of herbs as medicine, but herbs are also food! They are "nature's whole food vitamins" better than any synthetic, generic vitamin found on drugstore shelves.

We will discuss popular supplements currently on the market. You will also learn how to make your own herbal formula using ground herbs to target specific health issues and increase your daily nutritional intake. *Includes a handout with herb charts, recipes, and an eBook.*

IN PERSON **PUY LSC 150** **Fee: \$39**
Saturday **noon to 1:30 p.m.**
Bailey **1 session: April 29**

NEW! Canning Low or No Sugar Jam

This class will teach the basics and safety of home canning and the equipment needed. Hands-on project will focus on low or no sugar jams and jellies. You'll take home a jar of home-canned goodness for your pantry. **SUPPLY FEE: \$5 cash due at the start of class.**

IN PERSON **PUY CDP** **Fee: \$49**
Saturday **10 a.m. to noon**
Basquez **1 session: May 6**

Herbal Medicine Basics

This is the ultimate beginner herbal medicine class. You will learn the different types of herbal medicine, what an herbalist does and how they use and choose herbs for specific remedies. We will also cover herbal energetics, actions, tastes and creating formulas and duration of use. Find out what is your dosha or body type and how that helps determine which herbs are situationally appropriate. *Includes a handout, dosha test and an eBook.*

IN PERSON **PUY LSC 150** **Fee: \$39**
Saturday **noon to 1:30 p.m.**
Bailey **1 session: April 15**

Herbal Infusions

Learn how to infuse herbs to make delicious or medicinal teas, tinctures/extracts, vinegars, oils, syrups and more! We will also cover the basics of "tea" and herbal tisanes, how to brew the perfect cup as well as how to create tea blends. The instructor will demonstrate many techniques and will provide tea tasting during class. *Includes handout, herbal infusion charts, recipes, and eBook.*

IN PERSON **PUY LSC 150** **Fee: \$39**
Saturday **noon to 1:30 p.m.**
Bailey **1 session: May 13**

Cooking with Herbs and Spices

Put a little spice in your life, or at least in your food! In this class we will discuss herbs and spices that can enhance the flavor of your favorite dishes, as well as how to make your own seasoning blends. We will cover Asian, Mexican, Indian, Mediterranean and other region blends like curry, garam marsala, etc. as well as types of peppers and salt and an intro to culinary herbs. *Includes a handout, herb & spice cooking chart, recipes, and eBook.*

IN PERSON **PUY LSC 150** **Fee: \$39**
Saturday **noon to 1:30 p.m.**
Bailey **1 session: May 27**



NEW! Herbal Topicals

Learn how to make your own topical herbal bath & beauty products using natural ingredients perfect for giving as gifts or to customize for your personal needs. You will learn how to make several projects including: balms, butters, cleansers, soaps, masks, scrubs, fragrances sprays, toners, essential oil fragrance blends, herbal bath salts, and fizzies. *Includes a handout, essential oil 101 charts, recipes, and eBook.*

IN PERSON **PUY LSC 150** **Fee: \$39**
Saturday **noon to 1:30 p.m.**
Bailey **1 session: June 10**

Organic Gardening Basics

Learn why Healthy Soil = Healthy Plants and how organic methods can create successful, low maintenance landscapes. We will cover the basics of gardening and plant care- fertilizers 101, natural pest control, compost, mulch, beneficial microbes, insects, proper watering, pruning, planting, propagation. Current design trends, companion planting methods and seed starting will also be discussed. *Includes a handout, Organic Plant Care Guide, and eBook.*

IN PERSON **PUY LSC 150** **Fee: \$39**
Saturday **10-11:30 a.m.**
Bailey **1 session: April 15**

Gardening with the Seasons

Learn why working with Mother Nature makes gardening easier and how it also helps our landscape adapt to climate changes. In this class you will discover what you need to do to seasonally prepare your garden for fall and winter months while getting a jump start on spring and summer. We will cover when to cultivate your garden and edible plants, as well as when the best times you can plant, transplant, propagate, start seeds, prune, mulch and fertilize your landscape. *Includes a year-round garden planning by the moon schedule; seasonal gardening guide, handout, and eBook.*

Includes a year-round garden planning by the moon schedule; seasonal gardening guide, handout, and eBook.

IN PERSON **PUY LSC 150** **Fee: \$39**
Saturday **10-11:30 a.m.**
Bailey **1 session: April 29**



To register online, go to:

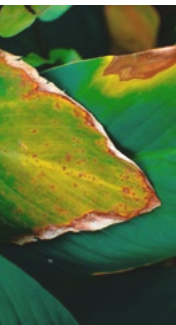
www.PierceCE.com



Backyard Foraging

To "forage" is to wander for food in the wild and in the class, we discuss how to forage, without ravaging, in our own backyard or other wild places. We will learn how to identify garden weeds, medicinal, edible, and aquatic plants that are native or introduced to the PNW as well as their traditional uses. Join Biologist, Kerri Bailey, as she shares her 30+ years of wild crafting experience harvesting, drying, storage, recipes, and conservation concerns. *Includes handout, eBook, and edible plant list. Provide plant samples to instructor or submit images for plant ID.*

IN PERSON **PUY LSC 150** **Fee: \$39**
Saturday **10-11:30 a.m.**
Bailey **1 session: May 13**



NEW! Diagnosing Plant Problems

Wait before you spray, especially if you are not sure why your plants are sick or keep dying. Or maybe you are unsure about which product to use to treat diseases or insect damage on your indoor and outdoor vegetation? Your mind will ease as you learn about plant health, identifying

plant issues, natural pest control methods, beneficial insects that can control pests and how to determine which are the best choices given the situation. *Includes a handout with spray recipes & eBook. Bring or submit your images of problem plants, insect or damaged areas, and lawn issues for instructor advice.*

IN PERSON **PUY LSC 150** **Fee: \$39**
Saturday **10-11:30 a.m.**
Bailey **1 session: June 10**

NEW! Create the Ultimate Edible Garden

There is nothing like the taste of fresh veggies, herbs and spices straight from the garden! Learn how to create and care for your own organic edible herb and medicine garden for cooking, preserving, fresh eating and making amazing tea beverages and spice blends. Save money by growing & harvesting your own food, replace ornamentals with edibles or add to your existing landscape. *Includes Cool vs Warm Season Veggie Guide; design ideas; edible flowers and seasonal gardening charts, handout and eBook.*

Includes Cool vs Warm Season Veggie Guide; design ideas; edible flowers and seasonal gardening charts, handout and eBook.

IN PERSON **PUY LSC 150** **Fee: \$39**
Saturday **10-11:30 a.m.**
Bailey **1 session: May 27**



Language



Beginning Conversational Spanish I

The best way to learn a language is through conversation. In this fun and relaxed beginning level course, you'll learn conversation skills virtually plus some basic phrases and more!

VIRTUAL **Fee: \$119**
Tuesday **6:30-8 p.m.**
Palacios **6 sessions: April 11 to May 16**

Beginning Conversational Spanish II

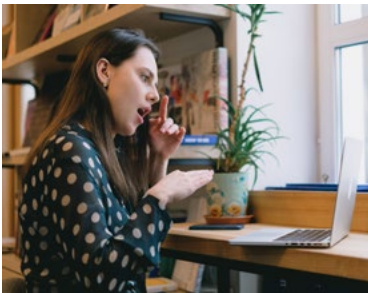
As a continuation of the class, Beginning Conversational Spanish I, we will continue to add vocabulary, introduce basic verbs and form sentences. This course is ideal for those with more knowledge of Spanish. It is encouraged to first take Beginning Conversational Spanish I.

IN PERSON **PUY ADM 138** **Fee: \$119**
Thursday **6:30-8 p.m.**
Palacios **6 sessions: April 13 to May 18**

Discover Sign Language

Learn to sign basic phrases, allowing you to introduce yourself and start a conversation. You'll watch videos that demonstrate how to make the signs and how to incorporate facial expressions to communicate in this beautiful language. This course is taught using the best practices of the industry with a minimum of audio support. You will be immersed in silence, to help you gain an understanding of the perspective of Deaf people and sign language. You will also gain an introduction to the world of the Deaf culture and explore topics such as lip reading, baby signs, and the career of interpreting. **Start anytime!**

ONLINE **3 MONTH ACCESS** **Fee: \$119**



Pierce Kids College

NEW! Gamebots Robotics – Hockey and Go Karts (Ages 7-12)

A hockey and go karts themed course, students will have a blast learning about robotics while creating robotic games using LEGO® bricks. While working with a partner to build, program and play games, your student will be taught how to effectively utilize sensors, how different mechanical components work in their robots, and how programming is a challenging but rewarding skill that they can master with just a little practice. We will support them in the development of their coding and building skills and inspire them with creative building challenges based on games they already play!

IN PERSON **PUY ADM 136** **Fee: \$59**
Saturday **1-4 p.m.**
Snapology **1 session: April 22**

NEW! Gamebots Robotics – Duck Hunt and Brickboard (Ages 7-12)

A Duck Hunt and Brickboard themed course, students will have a blast learning about robotics while creating robotic games using LEGO® bricks. While working with a partner to build, program and play games, your student will be taught how to effectively utilize sensors, how different mechanical components work in their robots, and how programming is a challenging but rewarding skill that they can master with just a little practice. We will support them in the development of their coding and building skills and inspire them with creative building challenges based on games they already play!

IN PERSON **FS OLY 202** **Fee: \$59**
Saturday **1-4 p.m.**
Snapology **1 session: May 20**



RESEARCH BASED

Snapology's approach is based on proven research; that children's best learning experiences come from actively designing, creating, interacting and inventing.

GOALS AND OBJECTIVES

Snapology offers a variety of activities designed to reinforce core competencies and curricula being taught at each grade level.

FLEXIBLE STRUCTURE

Snapology's flexible curriculum allows teachers to adapt to the needs of each unique group of students while allowing children to progress and explore at their own pace.



BRING YOUR SPECIAL SKILL, KNOWLEDGE AND EXPERTISE TO THE COMMUNITY

Teach a class for Community and Continuing Education at Pierce College. We are looking for part-time/non-credit instructors. Classes offered evenings or Saturdays. Share your knowledge and talent while earning a paycheck.

QUALIFICATIONS:

- Experience with proposed subject matter
- Enjoy sharing knowledge and skills with others
- Completed course proposal

For a course proposal form visit PierceCE.com

Music & Voice



Introduction to Voiceovers: Getting Started in Voice Acting

Explore the craft of voiceovers! Discover current trends, opportunities, and tools you need to find success in this growing remote working industry. Read a real script and receive coaching from your instructor, a professional voice actor, to improve your delivery. One-time, 90 minute, one-on-one, video-chat class! After registration, please email ce-questions@pierce.ctc.edu to schedule your one-on-one chat today! **Requirements: Students must have internet access and video chatting capabilities using a method such as: Zoom, Skype (Win/Mac/Mobile) or iChat/FaceTime (Mac/iOS).**

VIRTUAL **Fee: \$69**
Arranged **90 min.**
VFA **1 session: ONLINE**



Beginning Guitar

Come learn how to play your guitar quickly and easily in this fun course. You will learn the basics of reading music, how to hold and use a pick, tuning, chords, finger

numbers, hand position, strum patterns and more. You'll also learn several songs, all with different styles and techniques. Please bring a functioning guitar and pick to class. **SUPPLY FEE: \$10 cash due at the start of class.**

IN PERSON **PUY AAH 203** **Fee: \$119**
Wednesday **5:30-7 p.m.**
Herring **5 sessions: April 12 to May 10**

Songwriting

We'll study word composition and phrasing, song arrangement, chord progressions as well as continuity of theme. Includes exercises in word phrasing, rhyme and poetry. You will also have the chance to share your individual ideas while forming your own songs! Ann Herring is an award winning songwriter who with her band at one time toured with Johnny Cash, Rodney Crowell, and Emmylou Harris.

IN PERSON **PUY AAH 203** **Fee: \$109**
Monday **5:30-7 p.m.**
Herring **4 sessions: April 17 to May 8**



To register online, go to:

www.PierceCE.com

Personal Planning & Finance

Ready or Not – How to Prepare Financially for the Unexpected

Learn tips on how to develop a proactive strategy for protection and prepare for those unexpected financial events life throws at you.

IN PERSON **PUY ADM 136** **Fee: \$29**
Wednesday **6-8 p.m.**
Loe **1 session: May 31**



Creating Your Estate Plan

Spend a comfortable evening where we will walk through the basics of estate planning. You will learn what to consider when creating a will, the benefits of trusts in estate planning, how to help reduce taxes on estates and how insurance can help protect your family.

IN PERSON **PUY ADM 136** **Fee: \$29**
Wednesday **6-8 p.m.**
Loe **1 session: May 3**

Health Care and Your Retirement

This informative class addresses what steps you should take to prepare for health care costs to help ensure your retirement savings stays healthy. Plenty of time for questions and answers.

IN PERSON **PUY ADM 136** **Fee: \$29**
Wednesday **6-8 p.m.**
Loe **1 session: April 19**

401(k) – Your Questions Answered

This informative class will help you learn how to handle your 401(k), pension or other employer-sponsored retirement plan when you leave a job through retirement. Learn about distribution options and how to best plan for the future.

IN PERSON **PUY ADM 136** **Fee: \$29**
Wednesday **6-8 p.m.**
Loe **1 session: May 17**

Planning for Your End of Life

Spring into action and plan for your future. Learn how to put your Will, final papers, and end-of-life information in order. Topics include important documents to have on file, helpful information for loved ones, and ideas for leaving a lasting memory. A checklist to follow and a resource list will be provided.

VIRTUAL **Fee: \$39**
Wednesday **6-8 p.m.**
Holmstrom **1 session: April 12**



COLLABORATIONS



Invista Performance Solutions is a workforce training resource that provides customized, targeted employee training for businesses. 253-583-8860 and info@invistaperforms.org

WATCH FOR
PIERCE KIDS COLLEGE
SUMMER PROGRAMMING
THIS MAY!

For detailed course descriptions, pricing and to register, go to:

Career.PierceCE.com



ARE YOUR UNEMPLOYMENT BENEFITS RUNNING OUT?

If you are currently receiving WA unemployment benefits you might be eligible for special funding. All courses listed here are approved for funding. Find more approved courses on Career Bridge at

CareerBridge.wa.gov

- Some programs qualify for WorkSource/WIOA funding. Call 253-840-8451 for assistance.
- Some programs qualify for Trade Adjustment Act (TAA) funding.
- **Employer payments and company vouchers** are accepted for these courses. Call 253-840-8451 for more information.
- Approved for **MyCAA military spouse funding** (\$4,000 per person)
- Under the **Fee Installment Plan**, you can make up to three interest-free payments. Contact cashiering at cashiering@pierce.ctc.edu or 253-964-6700.

Administrative

Certified Administrative Professional
6 months, 90 hours, \$1,795
(Exam voucher included)

Executive Assistant
12 months, 450 hours, \$3,595
(Exam voucher included)



Administrative Medical

Medical Billing and Coding
12 months, 70 hours, \$2,995
(Exam voucher included)

Certified Inpatient Coder
6 months, 170 hours, \$2,695
(Exam voucher included)

Certified Outpatient Coder
6 months, 200 hours, \$2,995
(Exam voucher included)

ICD-10 Medical Coding
6 months, 200 hours, \$1,795

Administrative Dental Assistant
6 months, 150 hours, \$1,795

Advanced Hospital Coding and CCS Prep
6 months, 100 hours, \$1,895
(Exam voucher included)

Certified Risk Adjustment Coder
6 months, 160 hours, \$1,495
(Exam voucher included)

Certified Health Unit Coordinator
6 months, 120 hours, \$1,495
(Exam voucher included)

Certified Medical Administrative Assistant
6 months, 160 hours, \$1,895
(Exam voucher included)

Medical Interpreter (Spanish/English)
9 months, 200 hours, \$2,595

Certified Professional Medical Auditor
6 months, 80 hours, \$1,695
(Exam voucher included)

Medical Office Manager
18 months, 555 hours, \$3,995
(Exam vouchers included)



Business

Advertising and Outreach Specialist
6 months, 100 hours, \$1,295

Business Coach
6 months, 100 hours, \$1,295

Certified Credit Counselor
6 months, 80 hours, \$1,995
(Exam voucher included)

Certified Internal Auditor
18 months, 300 hours, \$695

Certified Paralegal
12 months, 225 hours, \$2,695
(Exam voucher included)



Human Resources Professional
6 months, 120 hours, \$1,945

Lean Six Sigma Green Belt and Black Belt
12 months, 125 hours, \$2,545
(Exam vouchers included)

PMI Risk Management Professional
6 months, 50 hours, \$695

Professional Interpreter
6 months, 40 hours, \$995

Design and Art

Adobe Certified Professional
12 months 220 hours, \$2,795
(3 Exam vouchers included)

Graphic Design with Photoshop
9 months, 130 hours, \$2,445
(Software included)

Marketing Design Certificate
12 months, 360 hours, \$3,545

Multimedia Arts Certificate
12 months, 360 hours, \$3,545

Web Design Professional
12 months, 384 hours, \$3,345

Information Technology

Certified Ethical Hacker
6 months, 100 hours, \$2,895
(Exam voucher included)

CompTIA IT Fundamentals
6 months, 100 hours, \$895
(Exam voucher included)

Help Desk Analyst Tier 1 Support Specialist
6 months, 120 hours, \$1,645

Management for IT Professionals
6 months, 390 hours, \$2,295



Supply Chain

Certified Green Supply Chain Professional
13 months, 60 hours, \$1,595



Freight Broker/Agent Training
6 months, 180 hours, \$1,895

Senior Certified Sustainability Professional
12 months, 110 hours, \$2,495



DID YOU KNOW?

- **Employer payments and company vouchers** are accepted for these courses. Call 253-840-8453 for more information.
- Approved for **MyCAA military spouse funding** (\$4,000 per person)
- Under the **Fee Installment Plan**, you can make up to three interest-free payments. Contact cashiering at cashiering@pierce.ctc.edu or 253-964-6700.
- Some courses qualify for WorkSource/WIOA funding. Call 253-840-8453 for assistance.

NEW! LIVE ONLINE INSTRUCTOR-LED BOOT CAMPS VIA ZOOM

CompTIA Security+ Training Boot Camp

45 hours \$2,799 Live Online, Instructor-Led
5 Days, 90-day extended access to all course materials

Security+ holders have the knowledge and skills to help organizations proactively identify potential security risks and respond more quickly when incidents do occur. This boot camp includes five days of live training covering today's most critical information security issues and practices. You will leave fully prepared to pass the popular CompTIA Security+ SY0-601 exam and address real-world security challenges across the five areas outlined by the Security+ exam objectives: attacks, threats, and vulnerabilities, architecture and design, implementation, operations and incident response, and governance, risk, and compliance.

You will also receive an exam voucher for the CompTIA Security+ certification exam with your enrollment.

Ethical Hacking Dual Certification Boot Camp (CEH and PenTest+)

45 hours \$4,599 Live Online, Instructor-Led
5 Days, 90-day extended access to all course materials

In this comprehensive boot camp you will gain the ability to quantitatively assess and measure threats to information assets — and discover where your organization is most vulnerable to hacking. You will learn ethical hacking methodologies and gain hands-on hacking experience in our cloud-hosted cyber range, including reconnaissance, gaining access to systems, exploiting vulnerabilities, and infiltrating data.

This boot camp also prepares you to earn two in-demand certifications: EC-Council Certified Ethical Hacker (CEH) and CompTIA PenTest+. From penetration testing to certified ethical hacker concepts, you will be ready to advance your career in cyber security upon course completion.

You will receive an exam voucher for the EC-Council CEH and the CompTIA PenTest+ certification exams with your enrollment.

NEW! 6 MONTH ONLINE BOOT CAMPS

AI Machine Learning Boot Camp

Self-Paced, Online, Asynchronous 301 hours, 90-day duration of access Price: \$4,275

This comprehensive six-month program correlates directly to the AI and ML industry, with high demand for AI/ML certified and trained professionals, as revenue generated by AI/ML products is estimated to reach \$156.5 billion worldwide. In addition, the U.S. average salary range is \$90,000 - \$185,000, depending upon experience—making this profession lucrative and fulfilling. By the end of this course, you will be prepared for job roles such as: Machine Learning Researcher, Data Scientist - Entry level, Research Analyst, Quantitative Researcher, AI and ML Developer, Data Science Engineer - Machine Learning

This boot camp offers self-paced training that requires 15-25 hours a week to complete the curriculum. You will start with a powerful introduction to the current and historical context of AI, highlighting the massive opportunities in technology. This is followed by an introduction to AI and ML, progressing to data science programming with Python and SQL, and getting into ML and natural language processing (NLP). You will prepare to pass the Microsoft Azure AI Engineer Certification Exam AI-102: Designing and Implementing an Azure AI Solution.

Full Stack Web Development Boot Camp

Self-Paced, Online, Asynchronous 537 hours, 90 day duration of access Price: \$4,275

There is a high demand for individuals with programming and web designing skill sets, with the estimated U.S. market size for this industry being \$40.8 billion. In the U.S., your salary can range from \$50,000-\$145,000, depending upon experience, with the average salary being \$106,000. By the end of this course, you will be prepared for the following job roles: Front End Developer, Junior Web Developer, Full Stack Web Developer, Web Designer, Product Manager

Throughout this comprehensive six-month course, you are expected to spend 15-25 hours a week to master the material covering databases for web applications and several front-end to back-end programming/scripting languages such as Python, JavaScript, HTML, React, etc. You will acquire the skills and knowledge required to start handling web development projects.

Microsoft Azure Dual Certification Boot Camp

63 hours \$4,399 Live Online, Instructor-Led
7 Days, 90-day extended access to all course materials

This Boot Camp teaches you vital Microsoft Azure administration and security skills through hands-on labs, simulations, real-world application of skills, and expert instruction. The intensive training prepares you to pass the two exams necessary to become a Microsoft Certified: Azure Administrator Associate and Microsoft Certified: Azure Security Engineer Associate.

You will receive an exam voucher for the Microsoft: Azure Administrator (AZ-104) and the Microsoft: Azure Security Technologies (AZ-500) certification exams with your enrollment.

Cisco CCNA Associate & CyberOps Associate Training Boot Camp

60 hours \$3,999 Live Online, Instructor-Led
7 Days, 90-day extended access to all course materials

This innovative seven-day boot camp is designed specifically for network engineers and administrators requiring full knowledge of Cisco router and switch configuration. You will gain hands-on experience by completing a series of labs in our Networking Cyber Range. The labs provide practical experience in a networking and switching environment and prepare you for the simulation-based questions you will find on the CCNA 200-301 exam.

In addition to gaining in-depth knowledge about network access, IP connectivity, IP services, and automation and programmability for Cisco networks, you will learn about the hottest area of networking: network security. Our expert instructors first prepare you to pass the CCNA exam. After passing that exam, you will then train directly on the Cisco Certified CyberOps Associate curricula — all in one sitting.

You will receive an exam voucher for the Cisco CCNA and the Cisco CyberOps certification exams with your enrollment.



www.pierce.ctc.edu/ce-bootcamps

JUST FOR EDUCATORS
NONCREDIT ONLINE

PLEASE NOTE: Pierce College recommends that you check with your school district and/or state licensing agency to verify these course offerings will meet your district and/or state requirements for salary advancement and/or state certificate re-licensure. No refunds are given once you have been issued your username and password information.

GET YOUR CLOCK HOURS One year access, start anytime!

45 Clock Hours, Fee: \$304

Educators.PierceCE.com



| | |
|--|---|
| Behavior is Language | English Language Learner: Methods and Materials |
| Early Childhood: Observation & Assessment | Learning Disabilities |
| Early Childhood: Program Planning | Reading Fundamentals #3: The Elements of Effective Reading Instruction & Assessment |
| Early Childhood: Typical & Atypical Development | Response to Intervention (RTI) |
| English Language Learner: Evaluations & Assessment | New Social & Emotional Learning: Optimizing Learning Environments with Life Skills |
| English Language Learner: Language Acquisition | New Supporting At-Risk Young Learners & Their Families |
| English Language Learner: Linguistics | |

30 Clock Hours, Fee: \$254

Educators.PierceCE.com



| | | |
|---|---|--|
| Advanced Classroom Management: Children as Change Agents | Early Childhood: Family-Centered Services | Reading Fundamentals #2: Laying the Foundation for Effective Reading Instruction |
| Attention Deficit/Hyperactivity Disorder (ADHD) | Educational Assessment | Six Traits of Writing Model: Teaching and Assessing |
| Autism Spectrum Disorder: Information & Effective Intervention Strategies | Harassment, Bullying & Cyber-Intimidation in Schools | Talented & Gifted: Working with High Achievers |
| Build School Communities: Brain Smart Classroom Management | Inclusion | Teaching Diversity |
| Child Abuse | Infant & Toddler Mental Health | Teaching Elementary Math Conceptually |
| Drugs & Alcohol in Schools | Reading & Writing in Content Area | Traumatized Child |
| | Reading Fundamentals #1: An Introduction to Scientifically-based Research | Violence in Schools |

24 Clock Hours, Fee: \$139

SIX-WEEK CLASSES Teachers.PierceCE.com



Six-week courses start:
6-week access/24 course hours

| MARCH | APRIL | MAY | JUNE |
|-------|-------|-----|------|
| 15 | 12 | 17 | 14 |

| | |
|--|--|
| Common Core Standards in English K-5 | Homeschool with Success |
| Content Literacy: Grades 6-12 | Integrating Technology in the Classroom (STEM Clock Hours) |
| Creating Classroom Centers | Leadership |
| Creating a Classroom Website | Microsoft Excel in the Classroom |
| Creating the Inclusive Classroom: Strategies for Success | Microsoft PowerPoint in the Classroom |
| The Creative Classroom | Microsoft Word in the Classroom |
| Differentiating K-12 Assessments | Praxis Core Preparation |
| Empowering Students with Disabilities | Singapore Math: Number Sense and Computational Strategies |
| Enhancing Language Development in Childhood | Singapore Math Strategies: Model Drawing for Grades 1-6 |
| Get Assertive! | Singapore Math Strategies: Advanced Model Drawing for Grades 6-9 |
| Grammar for ESL | |
| Guided Reading and Writing: Strategies for Maximum Student Achievement | |

| |
|---|
| Solving Classroom Discipline Problems |
| Solving Classroom Discipline Problems II |
| Spanish in the Classroom |
| Survival Kit for New Teachers |
| Teaching Adult Learners |
| Teaching High School |
| Teaching Math: Grades 4-6 |
| Teaching Preschool: A Year of Inspiring Lessons |
| Teaching Science: Grades 4-6 |
| Teaching Smarter with SMART Boards |
| Teaching Writing: Grades K-3 |
| Teaching Writing: Grades 4-6 |
| Understanding Adolescents |
| Using the Internet in the Classroom |
| Writing for ESL |

*P-12 CLOCK HOURS: The Pierce College Community and Continuing Education department is an approved OSPI (Office of the Superintendent of Public Instruction) clock hour provider.

FAQ'S

- **How do I find out more about these classes?** Go to Professional.PierceCE.com for detailed course descriptions, pricing, more classes and registration.
- **Do I have to attend a classroom in-person to take a course?** No. Our courses are entirely online. You can work on course material wherever and whenever you have Internet access
- **What can I expect from an online course?** While content will vary depending on the subject, all courses feature instructional text and a final exam. Many courses also include supplemental learning material, such as assignments, quizzes, audio, video, infographics, and hands-on labs. You do not need to be logged on at a specific time each day
- **What does “Instructor Led” mean?** Instructor-Led courses operate on rolling monthly basis, with four available start dates. After enrolling, you will receive new lessons on a set schedule over a six-week period. Two lessons are released each week – one on Wednesday and one on Friday. The final exam is released consecutively with the 12th lesson. You will then have two weeks to complete the exam.
- **What does “Self-Paced” mean?** Self-Paced Tutorial courses are open enrollment, meaning you can enroll and start a course any time it is convenient. After enrolling, you will receive all lessons immediately and have three months access to complete the course content. Self-Paced Tutorial courses do not have extensions.

ACCOUNTING

Accounting Fundamentals I
Accounting Fundamentals II
Crystal Reports
Performing Payroll in QuickBooks
Purchasing Fundamentals
QuickBooks



BUSINESS, OFFICE AND SALES

Administrative Assistant Applications
Administrative Assistant Fundamentals
Effective Selling
High Performance Organization
High Speed Project Management
Introduction to Business Analysis
Keyboarding
Mastery of Business Fundamentals
Professional Sales Skills
Sales Training
Talent and Performance Management
Total Quality Fundamentals
Using Social Media in Business

BUSINESS WRITING

Business and Marketing Writing
Effective Business Writing
Fundamentals of Technical Writing
How to Make Money from Your Writing
Introduction to Internet Writing Markets
Research Methods for Writers
Resume Writing Workshop
The Craft of Magazine Writing
The Keys to Effective Editing
Write Effective Web Content
Writing and Editing



COMMUNICATIONS

Achieving Success with Difficult People
Individual Excellence
Interpersonal Communication
Keys to Effective Communication
Mastering Public Speaking
Presentation Skills
Skills for Making Great Decisions

COMPUTER PROGRAMMING

CSS3 and HTML5
C# Programming
C++ Programming
Java Programming
JavaScript
PHP and SQL
Python Programming
Visual Basic



ENTREPRENEURSHIP AND SMALL BUSINESS

Marketing Your Business on the Internet
Publish and Sell Your eBooks
Small Business Marketing on a Shoestring
Start and Operate Your Own Home-Based Business
Start Your Own Small Business
Starting a Consulting Practice



FINANCE AND INVESTING

Introduction to Stock Options
Keys to Successful Money Management
Personal Finance
Real Estate Investing
Stock Trading
Stocks, Bonds and Investing: Oh, My!
The Analysis and Valuation of Stocks
Where Does All My Money Go?



GRANT WRITING AND NONPROFIT

Get Grants!
Grant Proposal Writing
Grant Writing A to Z I
Grant Writing A to Z II
Marketing Your Nonprofit
Nonprofit Fundraising
Nonprofit Management
Starting a Nonprofit



GRAPHIC AND WEB DESIGN

Adobe Acrobat
Adobe Illustrator
Adobe InDesign
Adobe Lightroom
Adobe Photoshop
Creating Web Pages
Creating WordPress Websites
Designing Effective Websites
Dreamweaver
Web Design



LANGUAGE

Conversational French, Beginning
Conversational Japanese
Discover Sign Language
Instant Italian
Speed Spanish
Speed Spanish II
Speed Spanish III
Spanish for Law Enforcement
Spanish for Medical Professionals
Spanish for Medical Professionals II



MANAGEMENT AND LAW

Building Teams That Work
Creating a Successful Business Plan
Employment Law Fundamentals
Leadership
Managing Customer Service
Supervision and Management
Understanding the Human Resources Function
Workers' Compensation
Workplace Law Essentials

For detailed course descriptions, pricing,
even more classes and to register, go to:

Professional.PierceCE.com



PERSONAL COMPUTERS

Computer Skills for the Workplace
Microsoft Access
Microsoft Excel
Microsoft Outlook
Microsoft PowerPoint
Microsoft Project
Microsoft Publisher
Microsoft Windows
Microsoft Word
PC Security
PC Troubleshooting
Understanding the Cloud



TEST PREP

GED Prep
GMAT Prep
GRE Prep I and II
LSAT Prep
Praxis Prep
SAT/ACT Prep



IT TEST PREP

CompTIA A+ Certification Prep (Basic)
CompTIA A+ Certification Prep (Intermediate)
CompTIA A+ Certification Prep (Advanced)
CompTIA Network+ Certification Prep
LPI Linux Essentials Exam Prep

DISCOVER YOUR JOB SKILLS IN HEALTHCARE



HEALTHCARE SHORT CERTIFICATES

| | | |
|--|-------|----------|
| Certificate in Brain Health | \$69 | 10 hours |
| Certificate in Complementary and Integrative Health | \$149 | 24 hours |
| Certificate in End of Life Care | \$159 | 19 hours |
| Certificate in Energy Medicine | \$69 | 10 hours |
| Certificate in Food, Nutrition and Health | \$99 | 16 hours |
| Certificate in Gerontology | \$159 | 25 hours |
| Certificate in Global Healing Systems | \$79 | 13 hours |
| Certificate in Infectious Diseases and Infection Control | \$79 | 13 hours |
| Certificate in Integrative Behavior Health | \$153 | 24 hours |
| Certificate in Healing Environments for Body, Mind and Spirit | \$119 | 16 hours |
| Certificate in Healthy Aging | \$69 | 10 hours |
| Certificate in Legal and Ethical Issues in Healthcare | \$79 | 12 hours |
| Certificate in Meditation | \$79 | 8 hours |
| Certificate in Mindfulness | \$109 | 8 hours |

| | | |
|---|-------|----------|
| Certificate in Music Therapy and Sound Healing | \$109 | 8 hours |
| Certificate in Nutrition, Chronic Disease and Health Promotion | \$79 | 12 hours |
| Certificate in Pain Assessment and Management | \$79 | 12 hours |
| Certificate in Perinatal Issues | \$129 | 20 hours |
| Certificate in Spirituality, Health and Healing | \$229 | 25 hours |
| Certificate in Stress Management | \$99 | 14 hours |
| Certificate in Violence Prevention and Awareness | \$79 | 13 hours |
| Certificate in Wellness and the Environment | \$59 | 9 hours |
| Certificate in Women’s Health Issues | \$109 | 14 hours |

| | | |
|--|-------|----------|
| Human Anatomy and Physiology | \$119 | 24 hours |
| Medical Math | \$119 | 24 hours |
| Medical Terminology | \$119 | 24 hours |
| Veterinary Medical Terminology | \$119 | 24 hours |
| Become a Veterinary Assistant | \$119 | 24 hours |
| Spanish for Medical Professionals | \$119 | 24 hours |

MEDICAL CAREER EXPLORATION

| | | |
|--|-------|----------|
| Explore a Career as an Administrative Medical Assistant | \$119 | 24 hours |
| Explore a Career in Medical Coding | \$119 | 24 hours |
| Explore a Career in Medical Transcription | \$119 | 24 hours |
| Explore a Career in Nursing | \$119 | 24 hours |
| Explore a Career as a Pharmacy Technician | \$119 | 24 hours |
| Explore a Career as a Clinical Medical Assistant | \$119 | 24 hours |
| Explore a Career in Medical Writing | \$119 | 24 hours |

For detailed course descriptions, pricing, even more classes and to register, go to:

Professional.PierceCE.com

WE WANT TO MAKE YOU SMILE!

Come visit our dental hygiene clinic!

We offer:

- Comprehensive Exams/Oral Cancer Screenings
- Comprehensive Dental Hygiene Treatments (Teeth cleaning for adults, teens and children)
- Comprehensive Non-surgical Periodontal Treatment
- Comprehensive Preventive Care
- Nutritional Counseling
- Restorations (white and silver)
- Nitrous Oxide (laughing gas)

An affordable option for your comprehensive dental hygiene treatment and limited restorative treatment

www.pierce.ctc.edu/dental-clinic

Pierce College Dental Hygiene Clinic
(253) 964-6694
9401 Farwest Drive SW
Lakewood
Glacier Building, Second Floor

Please call today to schedule a FREE dental screening to see if you qualify for treatment in our Dental Hygiene Clinic!

We look forward to hearing from you!

Discounts for: Pierce College Students, Veterans, Active-duty Military, and the dependants of Veterans and Active-duty Military.

Pierce College offers bachelor’s degrees, associate degrees, and professional certificates in numerous programs of study (www.pierce.ctc.edu/). Career training opportunities prepare students for work in the fields like business, computers and technology, health care, communications and education. The college also offers adult basic education classes, English as a second language (ESL) classes, and community and continuing education classes.

Pierce College welcomes all students. Advisors (www.pierce.ctc.edu/advising) help resolve issues, answer questions, and provide information about the next best steps based on each individual’s needs. The college ensures that the lack of English language skills is not a barrier to education, access to services, or activities.

Pierce College supports and values the dignity of each member of its community and visitors, and is committed to maintaining an environment free from discrimination and harassment. This commitment applies to all levels and areas of operations and programs and is intended to ensure that all students and employees are provided equitable opportunities to realize their goals and to function safely and effectively within the Pierce College environment.

Pierce College recognizes its responsibility under state laws and their implementing regulations to investigate, resolve, implement corrective measures, and monitor the educational environment and workplace to stop, remediate, and prevent discrimination on the basis of race, color, national origin, age, perceived or actual physical or mental disability, pregnancy, genetic information, sex, sexual orientation, gender identity, marital status, creed, religion, honorably discharged veteran or military status, or use of a trained guide dog or service animal. Pierce College prohibits discrimination against and harassment of members of these protected classes, as well as any additional class(es) protected by local, state, or federal law. Any individual found

to be in violation of this policy will be subject to disciplinary action up to and including the possibility of exclusion from Pierce College facilities, dismissal from Pierce College as a student, and/or dismissal from employment, as applicable.

Members of the college community, guests, or visitors who believe they have been the subject of discrimination or harassment should report the incident or incidents to the District Title IX/EEO Coordinator identified below. If the complaint is against that Coordinator, or if for some other reason a report cannot be made to the Coordinator, the complainant should report the matter to one of the alternate designees listed below.

District Title IX/EEO Coordinator
Holly Gorski
Pierce College Fort Steilacoom
Cascade Building, Room 207
9401 Farwest Drive SW
Lakewood, WA 98498-1999
253-964-6519 | HGorski@pierce.ctc.edu

District Section 504 Coordinator
Tami Jacobs
Pierce College Fort Steilacoom
Cascade Building, Room 380
9401 Farwest Drive SW
Lakewood, WA 98498-1999
253-964-6581 | tjacobs@pierce.ctc.edu

District Affirmative Action Officer –
Paula Henson-Williams - 253-864-3229 -
phenson@pierce.ctc.edu

District Title IX Coordinator - Pierce College – Sean Cooke - 253-840-8472 - scooke@pierce.ctc.edu
Deputy Title IX Coordinator - District Athletics – Duncan Stevenson - 253-964-6612 - dstevenson@pierce.ctc.edu

Deputy Title IX Coordinator - Pierce College Puyallup – Agnes Steward – 253-840-8403 - asteward@pierce.ctc.edu

Deputy Title IX Coordinator - Pierce College Fort Steilacoom – Tami Jacobs - 253-964-6581 - tjacobs@pierce.ctc.edu

Deputy Title IX Coordinator - Pierce College at Joint Base Lewis-McChord – Kelly Benson – 253-964-6716 - kbenson@pierce.ctc.edu

Information on how to report concerns about behavior that may have a negative impact on the climate can be found at www.pierce.ctc.edu/complaint-process. All reports of negative and inappropriate behaviors will be taken seriously. We believe that hearing about concerns presents an opportunity to consider any necessary improvements. Attempting to prevent someone from reporting a concern, and retaliating or attempting to encourage others to retaliate against someone who has raised concerns will not be tolerated.

Please also see our Discrimination and Harassment policy at www.pierce.ctc.edu/policy-discrimination-and-harassment

LIMITATION OF LIABILITY: The college’s total liability for claims arising from a contractual relationship with the student in any way related to courses or programs shall be limited to the tuition and expenses paid by the student to the college for those courses or programs. In no event shall the college be liable for any special, indirect, incidental or consequential damages, including but not limited to loss of earnings or profits.

All students are advised that the Pierce College Marketing & Communications Office takes photographs and shoots videos throughout the year which may include images (as well as audio/video recordings of

voices) of members of the student body and reserves the right to use them for publicity, promotional and marketing purposes. The College also reserves the right to take photographs of campus facilities and scenes, events, faculty, staff and students for promotional purposes in any areas on campus or at any Pierce College-sponsored event off campus where subjects do not have a normal and reasonable expectation of privacy. All such photographs and videos are defined as “Directory Information” and are the property of Pierce College and may be used for Pierce College promotional purposes (e.g. electronic and printed publications, websites, classroom use, college ads, etc.) without prior permission of the subjects.

As a general practice, there is no attempt to collect individual photo release forms from students. Instead, we make the assumption that Pierce College students are our best resources for marketing the College and that they will welcome involvement in these activities. However, students who do not wish to have their images/voices used for this purpose must stipulate this in writing to Marketing & Communications at the beginning of the quarter. It is also expected that such students will excuse themselves from photo/video sessions and inform the Pierce College photographer/videographer that they do not wish to be included.

CONTENT DISCLAIMER: Pierce College has made every reasonable effort to provide information that is accurate at the time of publication. However, the college reserves the right to make appropriate changes in policies, procedures, calendars, requirements, programs, courses and fees. When feasible, changes will be announced prior to their effective dates, but the college assumes no responsibility for giving any particular notice of any such changes. Nothing contained herein shall be construed to create any offer to contract or any contractual rights.

Postal Customer

**I DID IT!
YOU CAN
TOO!**

FRAN DAVIS

Frances Davis
Distinguished Alumni award: 2021
Fran was the first female United States Parole and Probation Officer in the Western District of Washington, which covers territory south of King County to Oregon. She was also the inaugural drug specialist in what was known as the "methamphetamine capital of the U.S."

